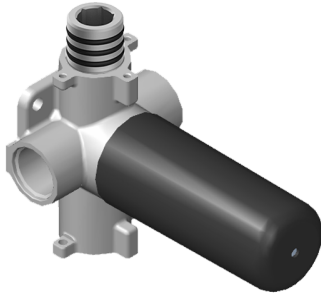


## G-8052

Two-Way Diverter Volume Control Valve WITH  
Off Function and Pass-Through

# GRAFF®



### Product Features

- 11.7 gpm @ 60 psi
- 3/4" universal inlets/outlets with female threads
- Operates one function at a time
- Stacking inlet and pass-through port feature
- Supplied with protective plastic cover
- CALGreen compliant depending on functions

### Available Finishes

\* Special order finish - call for availability