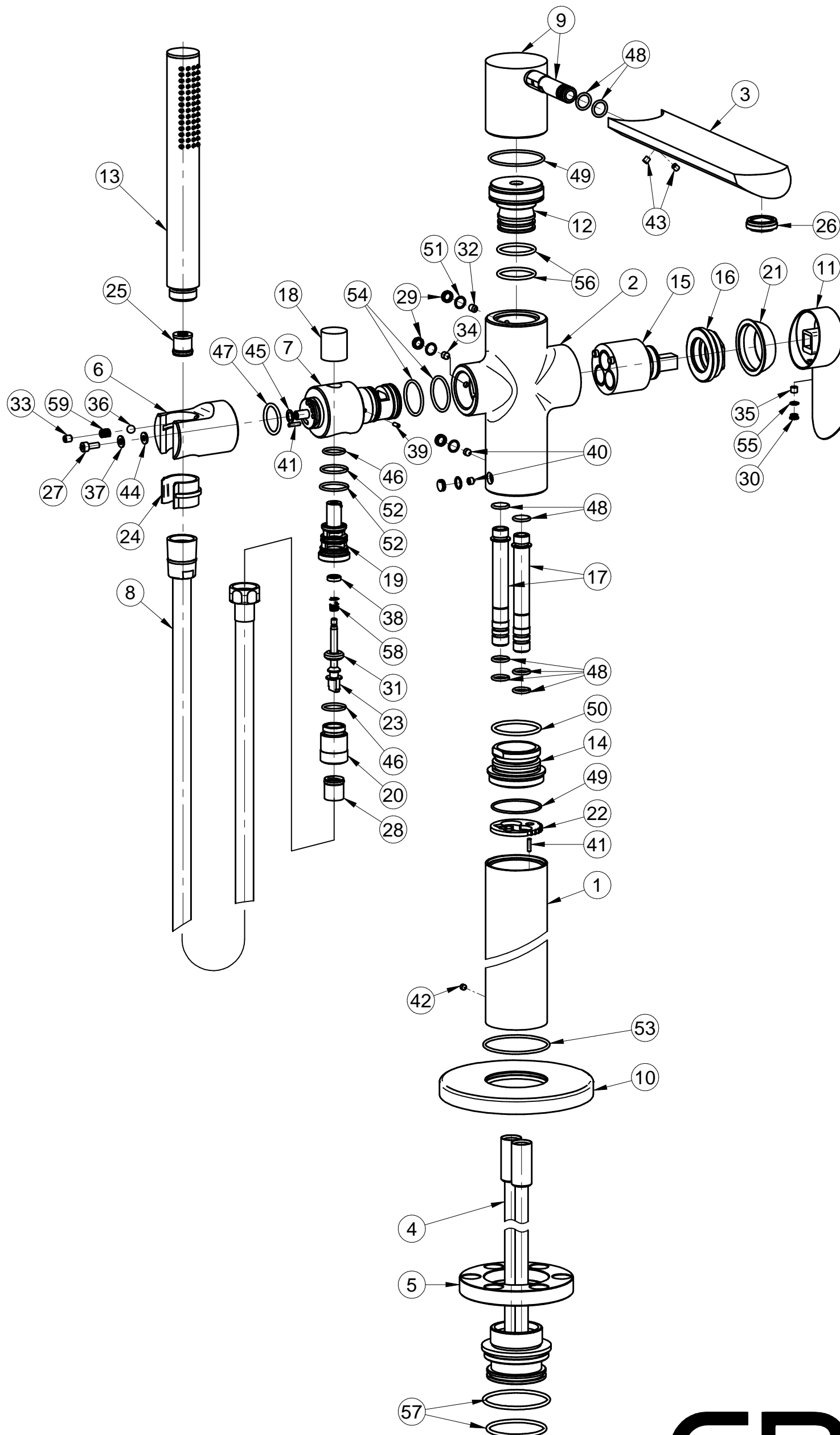


G-6654-LM45N-T

PHASE Series



POS NO.	SPARE PART DESCRIPTION	PCS	ITEM NO.
	Floor-mounted Tub Filler PHASE G-6654-LM45N-T		2862500
1	Pillar machining	1	2803520
2	Body	1	5106130
3	Spout	1	2862130N
4	Supply set	1	2803590
5	Mounting ringTarga	1	2119360
6	Hand shower holder	1	5106240
7	Diverter socket sol.	1	5106190
8	Hose G1/2-1500	1	2500350
9	Spout body -sol.	1	2862160N
10	Cover fi119x12	1	5103340
11	Handle body LM45N	1	5125800
12	Socket spout	1	5103230N
13	Hand Shower Ø25	1	5107400
14	Pillar stud	1	2803630
15	Cartridge K-40 A with hot limit ring	1	2811625
16	Nut M42x1.5/M37x1.5	1	2337950
17	Stud M12x1 long	2	5103160N
18	Diverter handle	1	5106440
19	Diverter body	1	5106300
20	Diverter connector	1	5106330
21	Cap M37x1.5	1	2337930
22	Lock washer	1	2803660
23	Diverter axle	1	5106360
24	Arm sleeve	1	2811480
25	Check Valve AV15/6	1	2846935
26	Aerator SLIM SSR M24x1	1	2398215
27	Screw M4x10 ISO4762	1	9903261
28	Check Valve	1	2167217
29	Plug no.2	4	5103370
30	Plug no.3	1	5108300
31	Gasket cone	1	5106390
32	Screw M5x6 PN-EN ISO 4029	1	9903133
33	Screw M5x6 ISO4026	1	9903150
34	Screw M5x6 ISO-4027	1	9903134
35	Screw M5x4 ISO-4029	2	9903140
36	Ball fi6 PN-M86452	1	9924105
37	Washer ISO 7089-4-Brass	1	9904001
38	Gasket U 10.4x4.5x2.8	1	5106400
39	Dowel pin fi2.5x7	1	2247427
40	Screw M5x5 PN-EN ISO 4027	2	9903160
41	Dowel pin fi2.5x10	2	2061475
42	Screw M4x4 PN-EN ISO 4027	1	9903024
43	Screw M4x4 ISO-4029	2	9903028
44	Slip washer	1	2811430
45	Washer	1	2348467
46	OR 14x1.78	2	5106420
47	OR 18.3x2.4	1	9916160
48	OR 9x1,8	8	9917084
49	OR 36x1.8	2	9917360
50	OR 30x2.5	1	9917305
51	OR 6x1	4	9916033
52	OR 17.17x1.78	2	5106430
53	OR 47x2	1	9916365
54	OR 22x2	2	9916245
55	OR 3x1	1	9917040
56	OR 23.3x2.4	2	9916200
57	OR 40x2.5	2	9916332
58	Diverter spring	1	5106410
59	Latch spring	1	2811440