



 **GLADIATOR**[®]
by Whirlpool Corporation

Why Gladiator® Garage Works?

Gladiator® products create the most complete organization system.

Hassle-Free Lifetime Warranty

We offer durable products with superior quality and the warranties to back them up.

The Most Complete Organization Solution

Gladiator® products work together so you can reclaim your space — floor to ceiling, wall to wall.

Ultimate Versatility

Our versatile products work with you and include: heavy-duty solid Rubber Casters, Modular Floor/Wall-Mounted Cabinets, customizable Wall Storage, Adjustable Height Workbenches and more.



Two Ways to Store



Premier Cabinets:

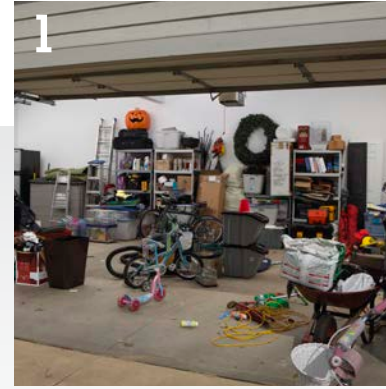
- ✓ Thick Heavy-Duty Steel
- ✓ Welded Steel Construction
- ✓ Standard Locking Casters with Rear Pivoting Casters
- ✓ Extra-Deep Storage Capacity
- ✓ Hassle-Free Lifetime Warranty



EZ Ready-To-Assemble Cabinets:

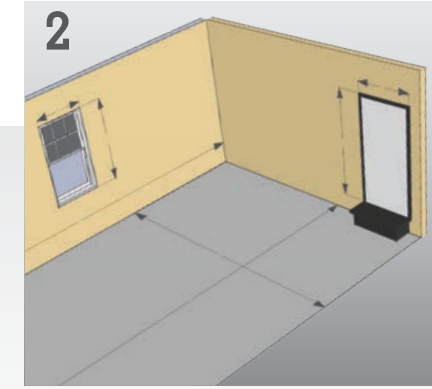
- ✓ Heavy-Duty Steel
- ✓ Easy-to-Assemble Construction
- ✓ Adjustable Leveler Legs (casters optional) with Rear Pivoting Casters
- ✓ Hassle-Free 10-Year Warranty

Reclaim Your Space in Three Easy Steps



Clear Out Your Space

Before you organize, clear everything out and decide what's worth keeping and what's not.



Get Your Dimensions

Make sure you measure the area so you know the space you're working with.



Build an Organization Foundation with Wall Systems

Start by securing your choice of wall system to studs, then add hooks and accessories.



Premium Storage Solutions

From wall systems to cabinets, and flooring to appliances, Gladiator brand has a premium solution to match any storage need. Plus, Gladiator® products don't just protect and organize, they also coordinate to create a uniform look for your garage, basement or mudroom.*

Cabinets



Hanging Wall Systems



Hooks & Wall Accessories



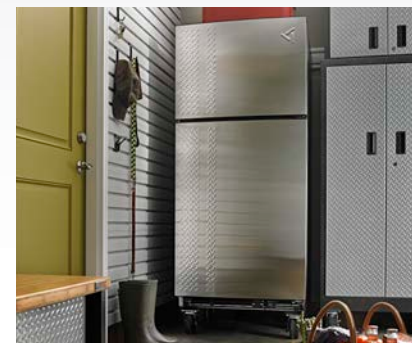
Shelving



Workbenches



Appliances

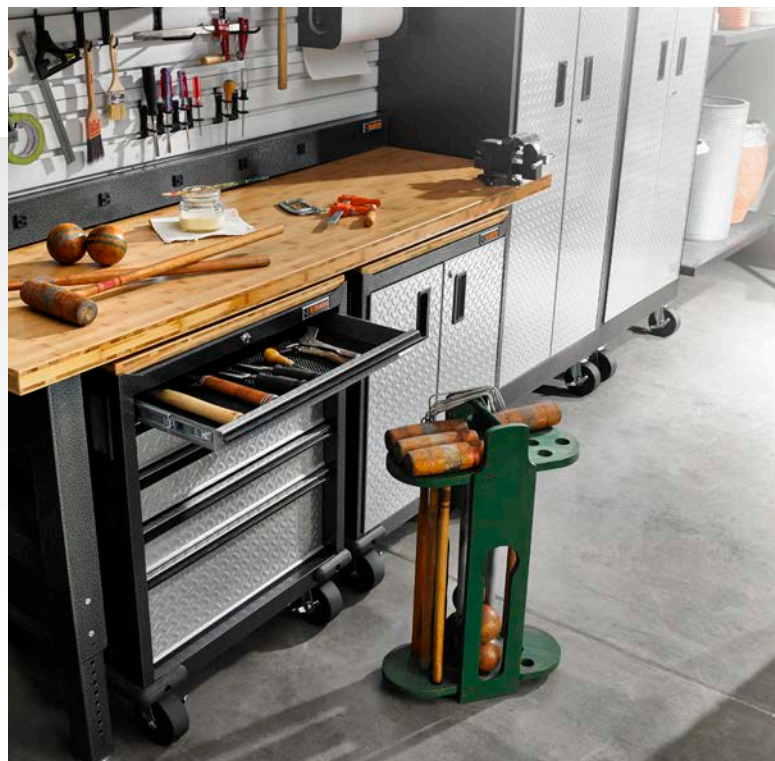


Tool Storage



Flooring





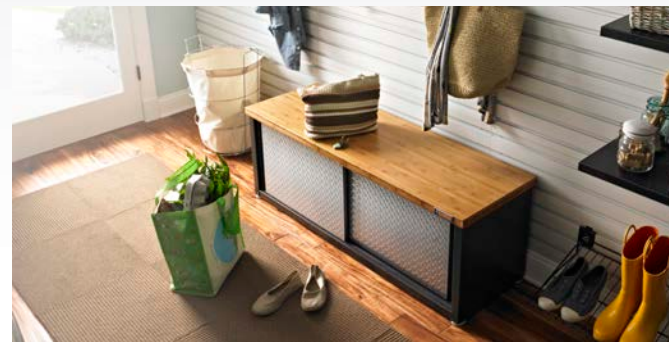
Garage

For the Garage, Home and Beyond

Gladiator® products help you organize every storage space in your home, including the garage, laundry room, mudroom, entryway, home office and more.



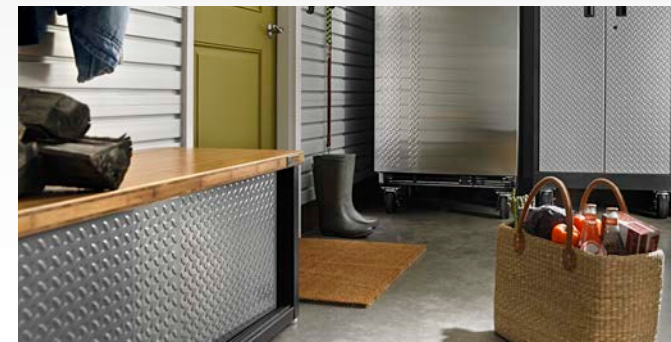
Laundry



Entryway



Office



Mudroom

Innovations



Chillerator® Garage Refrigerator

Engineered by appliance leader Whirlpool Corporation, the Chillerator® garage refrigerator is the only refrigerator built to store food and beverages effectively and efficiently in the extreme heat and cold of a harsh garage environment.

Its unique design helps reduce condensation during the summer and prevents thawing in the winter months.



Rack Shelving

The new Rack Shelving unit features a heavy-duty load capacity of 2,000 pounds per shelf and a tool-free design that allows additional shelves and frames to be installed when you need them with ease.

The Rack Shelving unit also complements the already robust product offering from Gladiator brand.



Storage Bench

Designed for flexibility, the new Storage Bench is the perfect place to sit and take your shoes off in the mudroom. You can also turn it into a stylish entertainment center for the living room.

It's built with a sturdy bamboo top and a heavy-duty steel frame. The dual bypass doors slide open to reveal plenty of storage space with enough room for 18 pairs of shoes.



Adjustable Height Workbench

New adjustable height workbenches define versatility. Available in 4-, 6- and 8-foot sizes, the legs can be adjusted from 28 to 42 inches high—perfect for creative projects, a desk or a bar area.

The versatility doesn't end there. Create a stylish and functional space, in the garage or in the home, by choosing between a maple or bamboo top.





Premier Series Cabinets

Invest in the Premier Series for durable welded steel cabinets, superior strength you can count on, standard solid rubber casters for versatility and a hassle-free lifetime warranty.* Also, all Gladiator® Premier Series products come pre-assembled, made here in the U.S.A., so you can start getting organized right away.

*Visit gladiatorgw.com for complete warranty details.

Premier Series Cabinets

Universal Features

Heavy-Duty Welded Steel Construction | Hammered Granite Finish | Extra-Deep Storage Capacity
Hassle-Free Lifetime Warranty* | Made in the U.S.A. | Heavy-Duty Rubber Casters**



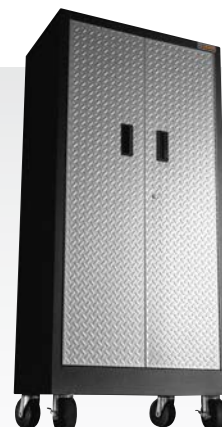
30" Wall GearBox
GAWG302DRG

- Two adjustable shelves
- Locking Tread Plate doors
- 30" W x 30" H x 12" D



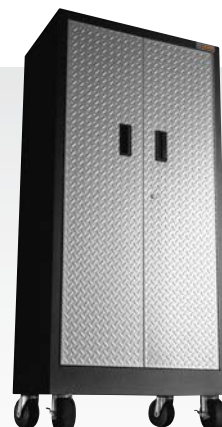
24" Wall GearBox
GAWG241DRG

- Adjustable shelf
- Reversible door
- 24" W x 24" H x 12" D



Tall GearBox
GATB302DRG

- Fixed shelf
- Two adjustable shelves
- 30" W x 66" H x 18" D



Tall GearLocker
GATL302DRG

- Divided storage space
- Four adjustable shelves
- 30" W x 66" H x 18" D



Modular GearBox
GAGB272DRG

- Full-extension shelf
- Bucket-top design
- 28" W x 34.5" H x 25" D



Modular GearDrawer
GAGD275DRG

- Five full-extension drawers
- Bucket-top design
- 28" W x 34.5" H x 25" D



GearChest
GATC26P8WG

- Eight full-extension drawers
- 2.75" tall divided top till
- 26" W x 18.6" H x 18.5" D



EZ to Assemble

The new EZ design of Gladiator brand's Ready-To-Assemble cabinets allows select models to be put together in half the time. The more efficient design also means fewer parts that need to be assembled. Plus, you're always covered by a hassle-free 10-year warranty* for our cabinets.

*Visit gladiatorgw.com for complete warranty details.

Ready-To-Assemble Series Cabinets

Universal Features

Heavy-Duty Steel Construction | Hammered Granite Finish | Easy-to-Assemble Design | Leveler Legs*
Hassle-Free 10-Year Limited Warranty**



Storage Bench
GAGB54SBYG

- Sliding dual bypass doors
- 1.5" thick bamboo top
- 54" W x 20" H x 18" D



Extra Large GearBox
GAJG48KDYG

- Fixed shelf
- Two adjustable shelves
- 48" W x 72" H x 18" D



Large GearBox
GALG36KDYG

- Fixed shelf
- Two adjustable shelves
- 36" W x 72" H x 18" D



Jumbo GearBox
GAJG36FDYG

- Extra-deep cabinet space
- One fixed shelf, two adjustable shelves
- 36" W x 72" H x 24" D



3-Drawer GearBox
GAGD283DYG

- Three 8.75" deep drawers
- Bucket-top design
- 28" W x 31" H x 18" D



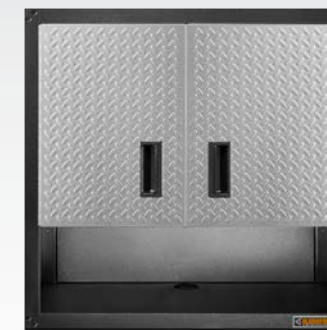
3/4-Door Modular GearBox
GAGB28KDYG

- Full-width adjustable shelf
- Ball-bearing slide drawer
- Heavy-Duty Rubber Casters (optional)
- 28" W x 31" H x 18" D



Full-Door Modular GearBox
GAGB28FDYG

- Fixed shelf
- Full-width adjustable shelf
- Heavy-Duty Rubber Casters (optional)
- 28" W x 31" H x 18" D



3/4-Door Wall GearBox
GAWG28KDWG

- Full-width adjustable shelf
- Open bottom shelf
- 28" W x 28" H x 12" D



Full-Door Wall GearBox
GAWG28FDYG

- Two adjustable shelves
- Six possible shelf placements
- 28" W x 28" H x 12" D

Hangin' Wall Systems

Using your walls for storage is a great way to get gear off the floor and maximize space. Gladiator® hanging wall systems are patented "slat wall" style tracks made for hanging our hooks, cabinets, baskets and bins.



Hanging Wall Systems



GearWall® Panels

4' – GAWP042PWY | 8' – GAWP082PMY

- Full-wall coverage
- Interlocking design offers the versatility and flexibility to section off storage stations or create a solid wall
- Mounts on bare wood studs or drywall over wood studs
- 48" or 96" W × 12" H × 0.75" D



GearTrack® Channels

GAWC041PZY

- Select-area coverage
- Mounts on bare wood studs or drywall over wood studs
- 48" W × 6" H × 0.75" D





Hooks & Wall Accessories

From bicycles to rakes and shovels, store even more items on our extended line of unique hooks. Plus, all of our hooks, baskets and bins easily reposition on both GearTrack® Channels and GearWall® Panels.

Hooks & Wall Accessories



Big Hook

GAWUXXBHRH

Great for weed trimmers and leaf blowers



Cradle Hook

GAWUXXCLRH

Great for hoses and electrical cords



Deep Hook

GAWUXXDHRH

Great for ladders, hoses and sawhorses



J & L Hooks

GAWAJL8PPH

Great for storing small tools



Loop Hook

GAWALP8PPH

Great for storing small tools



S Hook

GAWUXXSHRH

Great for brooms, rakes and snow shovels



Dual Hook

GAWUXXWHRH

Great for wheelbarrows and lawn chairs



Twin Hook

GAWUXXTWRH

Great for long-handled tools and paddles



Utility Hook

GAWUXXUHRH

Great for sledgehammers and lawn chairs



Scoop Hook

GAWUXXSCRH

Great for long-handled tools and lawn chairs



Storage Bin Holder

GAWUXXBMRH

Great for storing bulky storage/recycle bins



Tool Hook

GAWUXXTTRH

Great for shovels, rakes and rackets

Hooks & Wall Accessories



Gladiator Claw™ V3.0 Advanced Bike Storage

GAWUXXCPVK

Great for hanging bikes on wall for easy access



Horizontal Bike Hook

GAWUXXHBTG

Great for securing a bike parallel to the wall



Vertical Bike Hook

GAWUXXVBRH

Great for securing a bike perpendicular to the wall



Small Item Bins

GAWESB6PSM

Great for organizing nails and screws



Ball Caddy

GAWUXXBLTH

Great for storing up to nine full-size basketballs



Clean-Up Caddy

GAWU12CCTG

Great for paper towels and cleaning supplies



Wide Hook

GAWUXXWDRH

Great for leaf rakes and difficult-to-hang items



Fishing Pole Holder

GAWVXXFHTH

Great for neatly storing fishing poles



24" Mesh Basket

GAWM24MBRH

Great for storing athletic equipment



Golf Caddy

GAWUXXGFTB

Great for storing golf bags, balls and shoes



Project Caddy

GAWUXXPTTG

Great for auto and home improvement supplies



Organization Kits

Organizing spaces in your home can be tough, but our kits make it easy. From starter kits to mega kits, every kind of storage problem has a simple solution. Visit gladiatorgw.com for our newest kits, and reclaim your workshop and basement or mudroom today.





Shelving

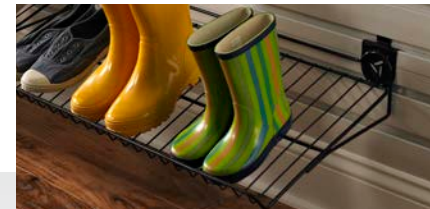
Gladiator brand's shelving options are a great way to easily store your gear while keeping it completely accessible. Choose between our innovative GearLoft™ Shelf, our Solid Shelves or our latest Rack Shelving addition.

Shelving



New Rack Shelving GARS774SZG

- Lifetime warranty
- No tool or hardware assembly
- 2,000 lb. shelf/8,000 lb. overall capacity
- Four full-width shelves
- NSF® certified
- 77" W × 72" H × 24" D



30" Wire Shelf GAWM30SRRH

- Great for shoes, boots and in-line skates
- 30" W × 5.5" H × 15" D



30" Solid Shelf GAWA30SFRG

- Great for storing cleaners and automotive fluids
- 30" W × 2.5" H × 12" D



24" Wire Shelf GAWM24WSRH

- Great for storing grass seed and gardening tools
- 24" W × 4.5" H × 12.5" D



48" Solid Shelf GAWA48SFRG

- Keeps frequently used items off the floor
- 48" W × 2.5" H × 12" D



45" GearLoft™ Shelf GAWA45SFTG

- Stores bulky items high on the wall
- 45" W × 16" H × 20" D



Workbenches

Strong, versatile workbenches ensure you'll always have a sturdy foundation to build upon. Made from all-natural, renewable resources, Gladiator® workbenches allow for docking space underneath and adjustability when needed.

Workbenches

Universal Features

1-Year Limited Warranty* on Wood Top | Hassle-Free Lifetime Warranty* on Adjustable Legs & Steel Frame
Leveling Legs | UV Cured Protective Coating | 1.75" Solid Maple or Bamboo Top



4' Adjustable Height Workbench

Maple: GAWB04MTZG
Bamboo: GAWB04BAZG

- Adjusts to meet ADA height requirements
- 48" W x 28"-42" H x 24" D
- Can support up to 3,000 lb.



6' Adjustable Height Workbench

Maple: GAWB06MTZG
Bamboo: GAWB06BAZG

- Adjusts to meet ADA height requirements
- 72" W x 28"-42" H x 24" D
- Can support up to 3,000 lb.



8' Adjustable Height Workbench

Maple: GAWB08MTZG
Bamboo: GAWB08BAZG

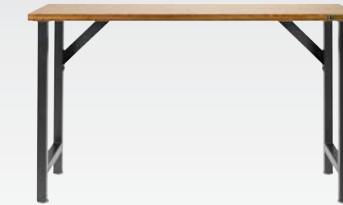
- Adjusts to meet ADA height requirements
- 96" W x 28"-42" H x 24" D
- Can support up to 3,000 lb.



Workbench Powerstrip

GAAC68PSXG

- Seven outlets on front, two on back
- Fits 6' or 8' workbenches



66.5" Bamboo Modular Workbench

GAWB66BAWG

- Fits any combination of two Ready-To-Assemble Series Modular GearBoxes
- 66.5" W x 38.75" H x 20" D
- 1.5" table surface depth
- Can support up to 300 lb.



73" Bamboo Modular Workbench

GAWB73BAXG

- Fits any combination of two Ready-To-Assemble Series Modular GearBoxes
- 73" W x 39" H x 23" D
- 1.5" table surface depth
- Can support up to 750 lb.



Appliances

Engineered by appliance leader Whirlpool Corporation, Gladiator® appliances are the only appliances built with premium designs and innovative, garage-specific features. That means our appliances operate effectively and efficiently in the extreme heat or cold of harsh garage conditions.

Appliances



Chillerator® Garage Refrigerator

GARF19XXYK

- 19 cu. ft. capacity
- ENERGY STAR® qualified
- Heavy-duty, solid rubber casters
- Freezer light
- Reversible-swing door
- Keeps internal temperatures consistent even during extreme winter or summer conditions
- 29.75" W x 72.7" H x 32.3" D

Trash Compactor

GACP15XXMG

- 1.4 cu. ft. capacity
- 4-to-1 compaction ratio
- Touch-Toe™ drawer opener
- 15" W x 36.75" H x 24.5" D



Tool Storage

When you're building a tool storage center, Gladiator brand is an ideal choice because of our rugged durability that's backed by a hassle-free lifetime warranty.* Protect the hardest-working items in your garage—your tools. They've earned a place of honor.



Tool Storage

Universal Features

Hassle-Free Lifetime Warranty* | Smooth Opening Gas Struts | Steel Ball Bearing Slides
 Universal Round Key Lock | Cushioned Drawer Liners | Heavy-Duty Casters | Deep Storage Capacity

A ▶



A

**Modular
GearDrawer**
GAGD275DRG

28" W x 34.5" H x 25" D

B ▶



B

GearChest
GATC26P8WG

26" W x 18.6" H x 18.5" D

C ▶



C

**6-Drawer
Tool Chest**
GATC26P6WG

26" W x 19" H x 17.1" D

D ▶

E ▶



D

**3-Drawer
Intermediate
Chest**
GATC26P3WG

26.5" W x 10.2" H x 17.3" D

E

**7-Drawer
Roll-Away**
GATR27P7WG

27.1" W x 38.8" H x 18.3" D

F ▶

G ▶



F

**41" 10-Drawer
Tool Chest**
GATC4110WG

40.4" W x 19.5" H x 12.4" D

G

**41" 12-Drawer
Roll-Away**
GATR4112WG

41.5" W x 38.8" H x 18.3" D

H ▶

I ▶



H

**52" 10-Drawer
Tool Chest**
GATC5210WG

50.9" W x 19.5" H x 17.1" D

I

**52" 10-Drawer
Roll-Away**
GATR5210WG

52" W x 38.8" H x 18.3" D



Flooring

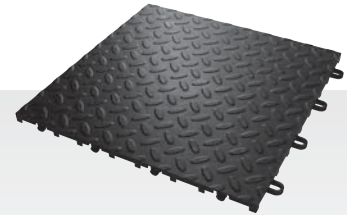
Gladiator® tile floor quickly covers cracks and stains while stylishly finishing off your garage. Our durable tiles support vehicles and other heavy equipment, snap together easily with no adhesives and include a lifetime warranty.*

*Visit gladiatorgw.com for complete warranty details.

Flooring

Universal Features

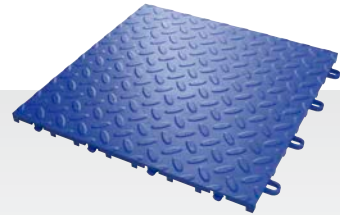
Hassle-Free Lifetime Warranty* | Quick, Easy-Snap Install | Supports Heavy Loads
Insulating & Slip-Resistant | Sleek, Finished Style | Convenient Drain Tiles | Stain & Chemical Resistant



Black (24 pack)

GAFT24TTTB

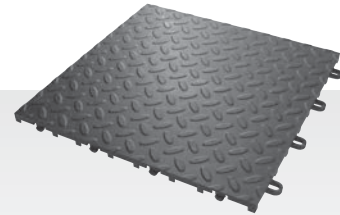
12" W x 0.5" H x 12" D



Blue (24 pack)

GAFT24TTTA

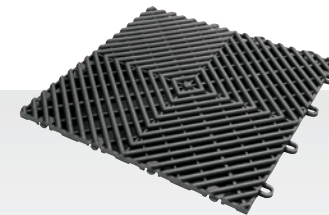
12" W x 0.5" H x 12" D



Charcoal (48 pack)

GAFT48TTPC

12" W x 0.5" H x 12" D



Drain Tile Charcoal (4 pack)

GAFT04DTPC

12" W x 0.5" H x 12" D



Red (48 pack)

GAFT48TTYR

12" W x 0.5" H x 12" D



Silver (48 pack)

GAFT48TTPS

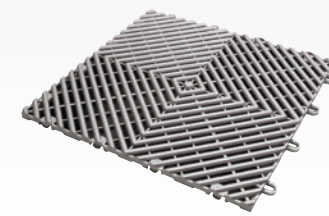
12" W x 0.5" H x 12" D



White (24 pack)

GAFT24TTTW

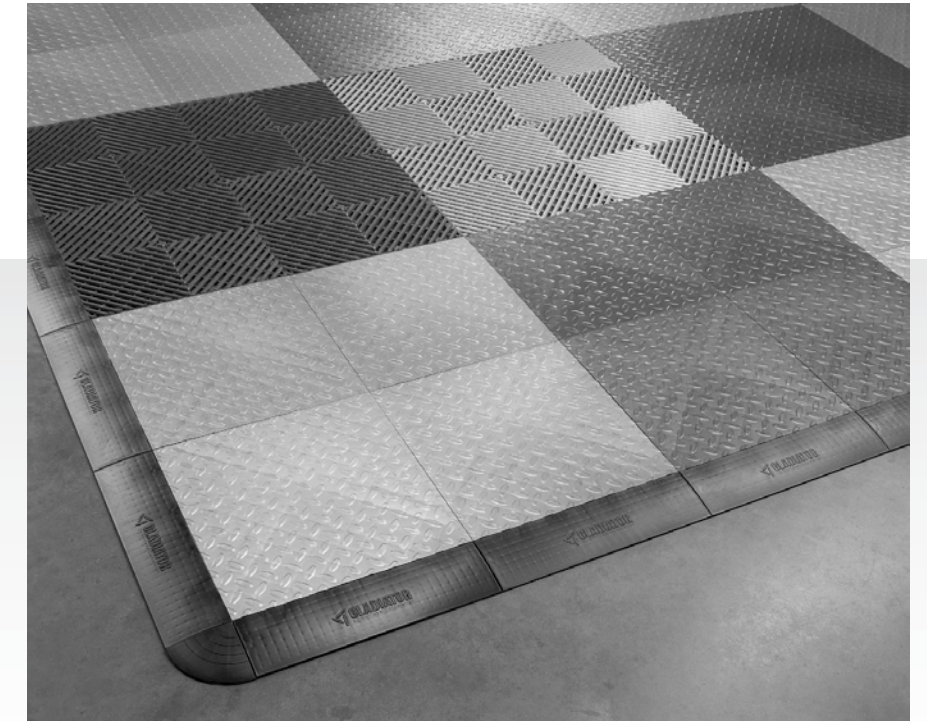
12" W x 0.5" H x 12" D



Drain Tile Silver (4 pack)

GAFT04DTPS

12" W x 0.5" H x 12" D



**Male Edge Trim
w/ Corner Piece
(6 pack + trim)**

GAFA06MEPB

**Female Edge Trim
w/ Corner Piece
(6 pack + trim)**

GAFA06FEPB

Additional Accessories



RTA Bracket Kit
GABK362PSS

Hangs a Ready-To-Assemble Large or Extra Large GearBox on all Gladiator® wall systems



Premier Bracket Kit
GABK301PRS

Hangs a Premier Tall GearLocker or Tall GearBox on all Gladiator® wall systems



RTA Caster Kit
GACK04KDSX

Adds mobility to Ready-To-Assemble Modular GearBoxes



GearWall® Panel Trim
GAWT086PBY

Adds a finished look to GearWall® Panels
1.75" W x 96" H x 0.75" D



GearWall® Base Board
GAWT08BTTM

Adds a finished look between wall and floor
96" W x 5.875" H x 0.625" D



Floor Pack
GAFP32CBZM

Covers 32 sq. ft. of space for you to showcase your most prized possessions



27" Bamboo Top
GAAC27BAYX

Turns a Premier Modular GearBox into a mobile workstation



27" Maple Top
GAAC27MTRX

Turns a Premier Modular GearBox into a mobile workstation



28" Bamboo Top
GAAC28BAYX

Turns a Ready-To-Assemble Modular GearBox into a mobile workstation



GearTrack® End Caps
GAACGE4PPM

Snaps onto GearTrack® Channels



Color Matched Screws
GAAC0232RY

Color matching creates a seamless look



Stool
GAAC30STPB

Double-ring leg construction with a chrome finish



