

**SPECIFICATIONS**

**OPULENCE™ SINGLE HANDLE BAR & CONVENIENCE FAUCET**

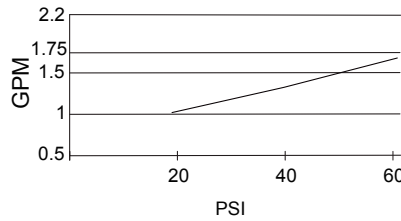
**Model**

D150557

**Description**

- Ceramic disc valve
- 9 3/4" high swivel spout, 5 1/2" spout length
- 4" deck plate DA667229 sold separately for single hole mounting
- 1.75gpm (6.6L/min) maximum flow rate @60 psi
- Meets CEC requirements

**Flow Rate**



**Standards**



NSF/ANSI 372

• NSF/ANSI 372

MEETS ASME A112.18.1M/A112.18.1

• ASME A112.18.1M/A112.18.1



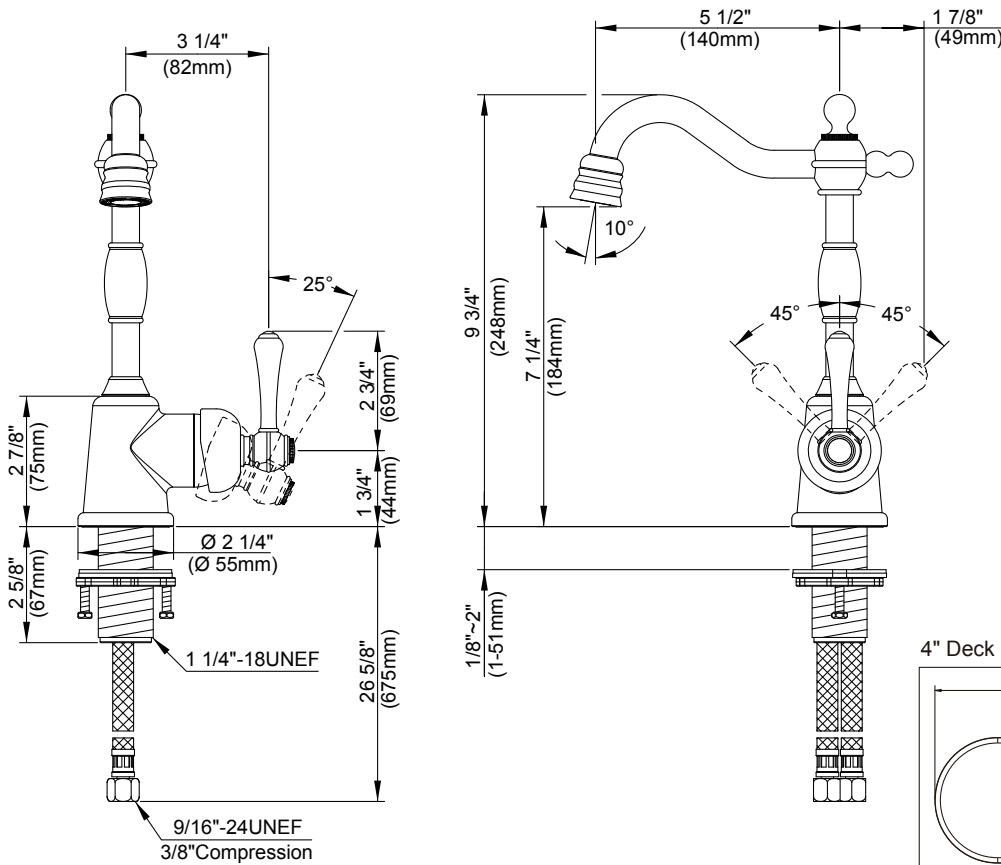
• ADA Accessibility Guidelines for Buildings and Facilities - 309.4 Operation for Operable Parts

**Warranty**

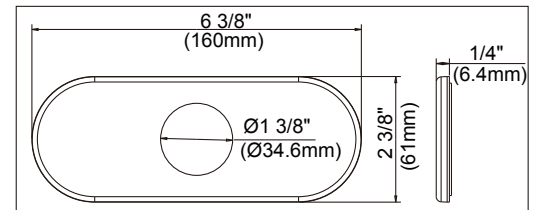
Danze products are covered by a manufacturer's limited "lifetime" warranty for manufacturing defects.

**Finishes Available**

- Chrome
- Other: Refer to Price List for additional finish



4" Deck Plate DA667229 Sold Separately



**Submittal Information:**

Job Name: \_\_\_\_\_  
 Contractor: \_\_\_\_\_

Location: \_\_\_\_\_  
 Contact #: \_\_\_\_\_