

Belleville Outdoor Wall

OL15300, OL15301, OL15302 1.0

GENERATION LIGHTING

Outdoor

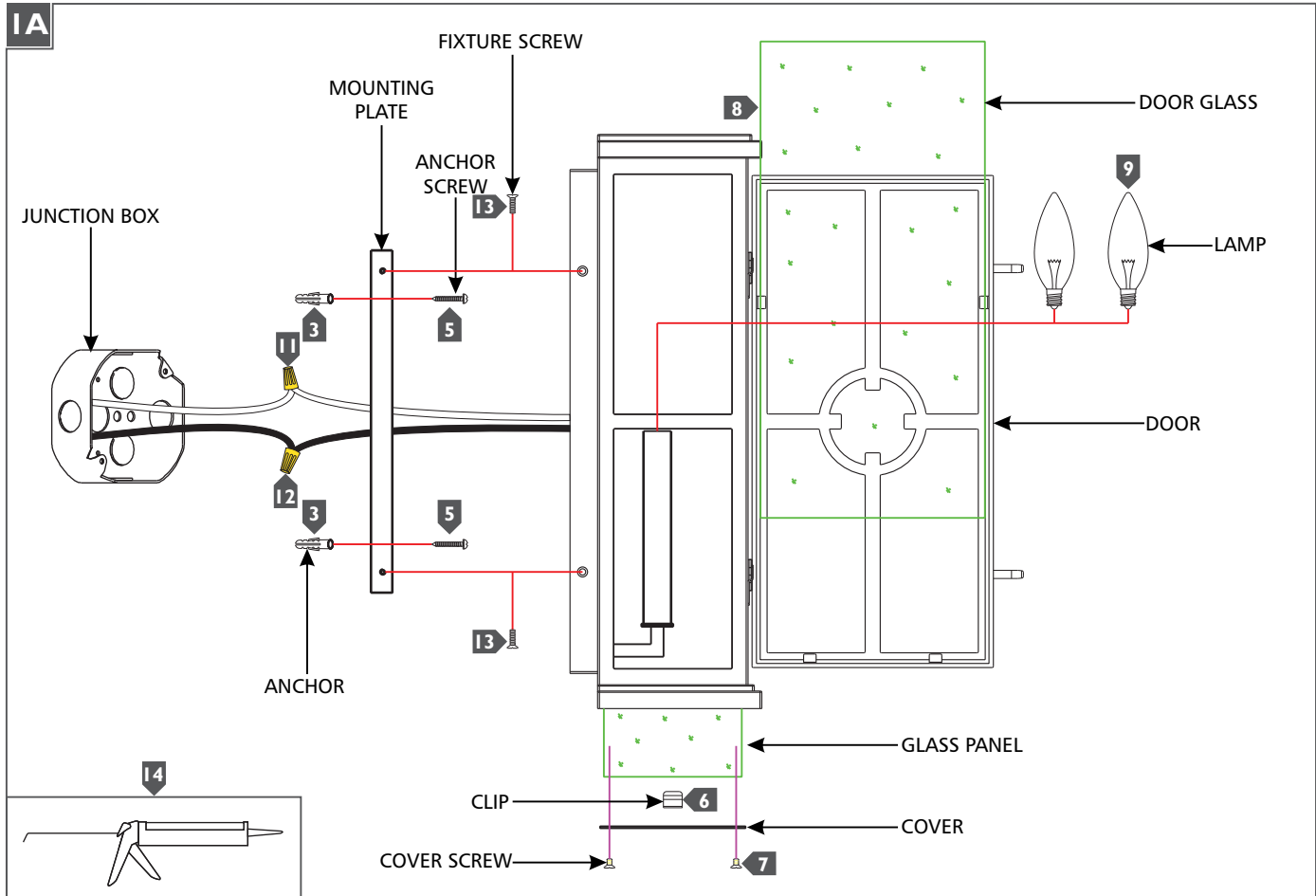
GENERAL PRODUCT INFORMATION:

These fixtures are intended to be installed utilizing NEC compliant junction boxes.

This product is safety listed for wet locations.

Incandescent lamps may be dimmed with a standard incandescent dimmer. LED lamps may be dimmed with a LED dimmer. Consult lamp manufacturer for additional information.

CAUTION - RISK OF FIRE
 This product must be installed in accordance with the applicable installation code by a person familiar with the construction and operation of the product and the hazards involved.
 Use minimum 90°C supply conductors.



- 1** For Models OL15301 & OL15302 Only: Temporarily install the mounting plate to the junction box.
- 2** For Models OL15301 & OL15302 Only: Mark the anchor hole locations on the mounting plate and remove the mounting plate.
- 3** For Models OL15301 & OL15302 Only: Drill appropriate size holes at the marked locations and install the anchors.
- 4** Secure the mounting plate to the junction box.
- 5** For Models OL15301 & OL15302 Only: Screw the anchor screws into the anchors.
- 6** Insert the glass panels through the bottom of the fixture, then secure them in place using the clips.
- 7** Install the cover to the bottom of the fixture using the cover screws.
- 8** Install the door glass by sliding it into the door.
- 9** Screw the lamps into the sockets. Refer to the label on the socket for max wattage information.
- 10** Connect the fixture to a suitable ground in accordance with local electrical codes.
- 11** Connect the white fixture wire to the neutral power line wire with a wire nut.
- 12** Connect the black fixture wire to the hot power line wire with a wire nut.
- 13** Mount the fixture base onto the mounting plate and secure it with the fixture screws.
- 14** For wet locations, caulk around the base of the fixture with waterproof construction sealant.

SAVE THESE INSTRUCTIONS!

GENERATION LIGHTING

7400 Linder Ave, Skokie, IL 160077

800.969.3347

www.generationlighting.com

© 2019 Generation Lighting. All rights reserved.

The "Generation Lighting" graphic is a registered trademark of Generation Lighting. Generation Lighting reserves the right to change specifications for product improvements without notification.