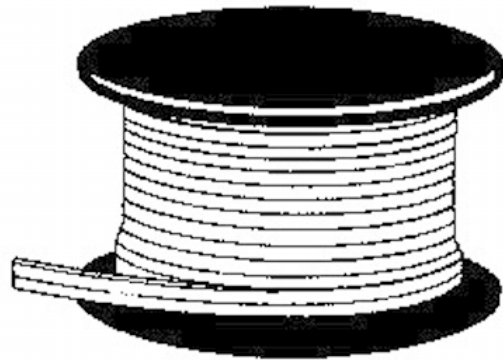


Job Name:		Item Number:	
Specifier Name:		Sales Agency:	
Specifier Contact:		Agency Contact:	
Fixture Type:		Comments:	
Quantity:		Approval:	

100' Indoor Lx Cable



L: 1200" W: 3/8" H: 3/16"

Description

Specially designed, easy piercing, self-sealing insulation over stranded copper wire for use with the Ambiance Lx Lighting System. Markings for socket placement every two inches. For use with Ambiance Lx track, lampholders and transformers. UL and C-UL listed. 105°C 10/2 cable for indoor use only. Maximum wattage per length 300w at 12V; 600w at 24V. Cable is not rated to be run behind walls. Check local codes.

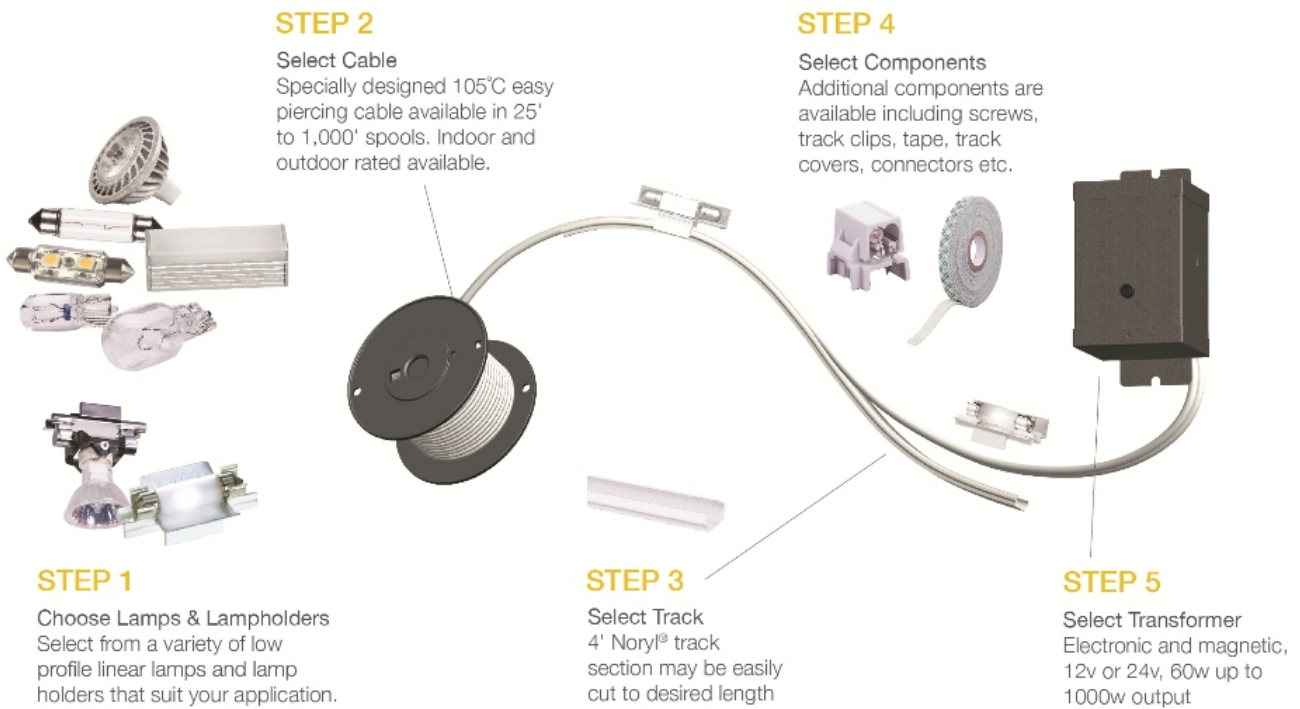
Specifications

Item Number	9471-15
Finish	White
Dimensions	L: 1200" W: 3/8" H: 3/16"
Safety Listing	UL Listed for Dry Locations cUL Listed for Dry Locations cETL Listed for Dry Locations
Warranty	1-Year Warranty

Shipping Information:

Package Type	Product #	Quantity	UPC	Length	Width	Height	Cube	Weight	UPS Ship
Individual	9471-15	1	785652947155	6.5	6.5	4.4	0.108	8.5	Yes
Master Pack	9471-15	6	10785652947152	14	14	7.5	0.851	53.1	Yes

Component Diagram:



AMBIANCE
Lighting Systems

7400 Linder Ave. | Skokie, Illinois 60077 | 800-347-5483
© 2013 Sea Gull Lighting LLC, a Generation Brands Company.