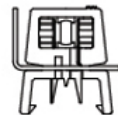


Job Name:		Item Number:	
Specifier Name:		Sales Agency:	
Specifier Contact:		Agency Contact:	
Fixture Type:		Comments:	
Quantity:		Approval:	

Lx Wedge Base Lampholder



L: 2 1/2" W: 3/4" H: 3/4"

Description

For use with our xenon and incandescent wedge base lamps, Ambiance Lx Wedge Base Lampholders feature a high quality reflector for minimizing light loss from your selected lamps. Each lampholder snaps onto Lx Track and Cable with ease and minimum spacing of 4 inches on center. Recommended for use in hard to reach applications or in tight spaces. Replacement lamps: 9727, 9728, 9729, 9731, 9732

Specifications

Item Number	9428-12
Finish	Black
Dimensions	L: 2 1/2" W: 3/4" H: 3/4"
Min. Spacing	4" on center
Safety Listing	UL Listed for Damp Locations cUL Listed for Damp Locations cETL Listed for Damp Locations
Warranty	1-Year Warranty

Optional Lamping

- (9728) 5w 12V Clear T3 1/4 Wedge Incandescent
- (9731) 3w 12V Clear T3 1/4 Wedge Xenon
- (9732) 5w 12V Clear T3 1/4 Wedge Xenon

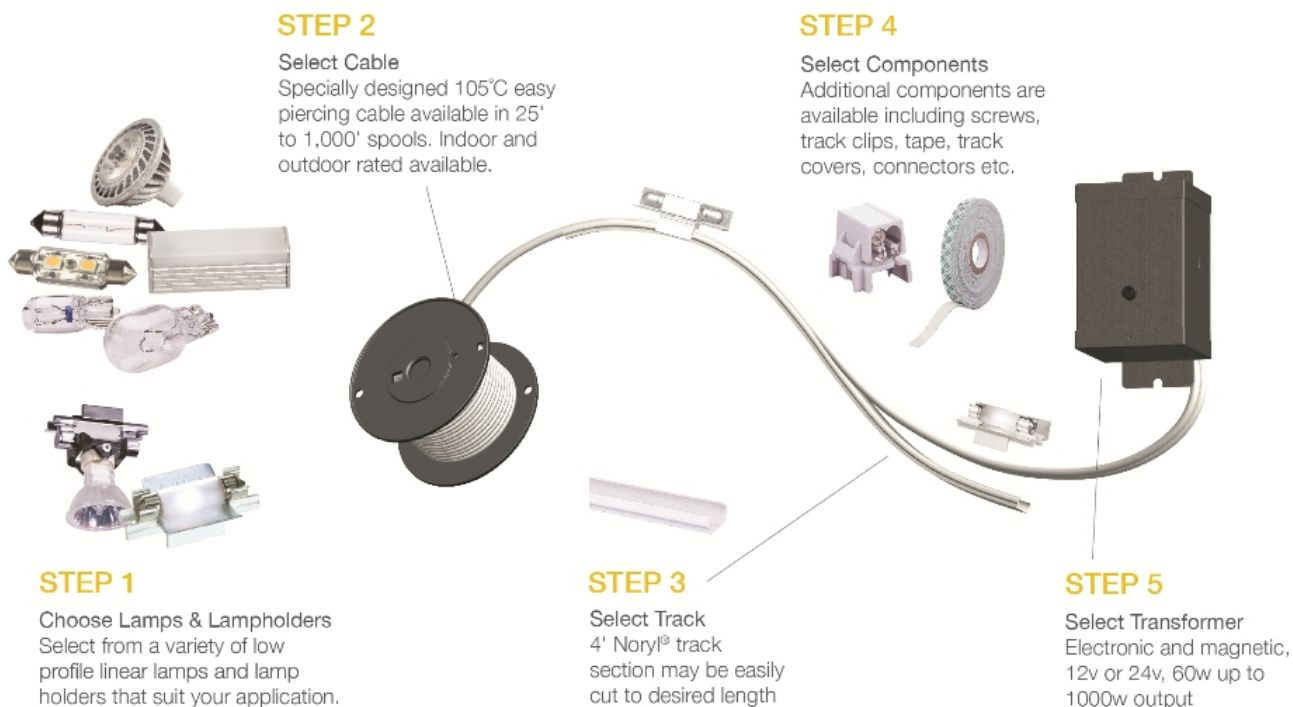
Instruction Sheets

- English (HC-128)

Shipping Information:

Package Type	Product #	Quantity	UPC	Length	Width	Height	Cube	Weight	UPS Ship
Individual	9428-12	1	785652942822	3	2.5	1	0.004	0.01	Yes
Master Pack		50	10785652942829	11	11	3	0.21	1.2	Yes
Shipping Master		1000	20785652942826	30.5	13	13.5	3.098	25.45	Yes

Component Diagram:



7400 Linder Ave. | Skokie, Illinois 60077 | 800-347-5483
© 2013 Sea Gull Lighting LLC, a Generation Brands Company.