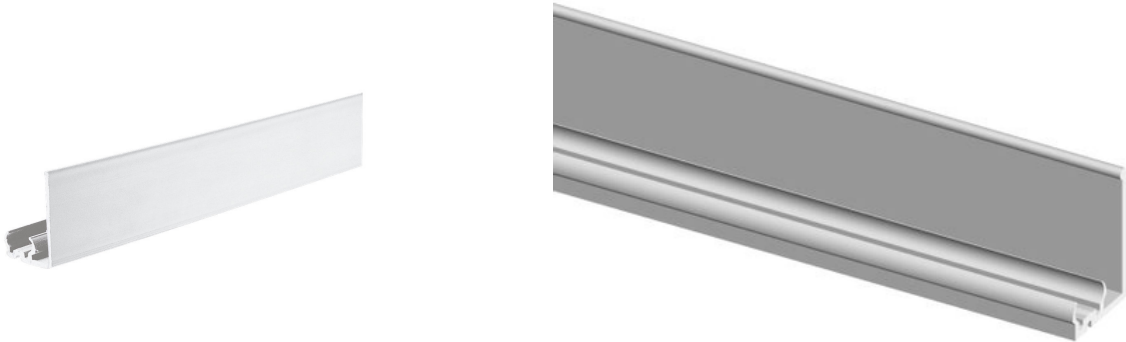


Job Name:		Item Number:	
Specifier Name:		Sales Agency:	
Specifier Contact:		Agency Contact:	
Fixture Type:		Comments:	
Quantity:		Approval:	

**Lx Track Fascia Panel**



L: 48" W: 7/8" H: 1 1/8"

**Description**

Noryl® fascia panel with integral track to support cable and lampholders. Use under shelves, inside cabinets or where system cannot be hidden behind within the existing environment. Track/fascia may be easily cut to various lengths. Nail, staple or use 9862 screws through pre-drilled holes to attach track/fascia to surface. High endurance double-faced tape is available for installation on glass and other smooth surfaces.

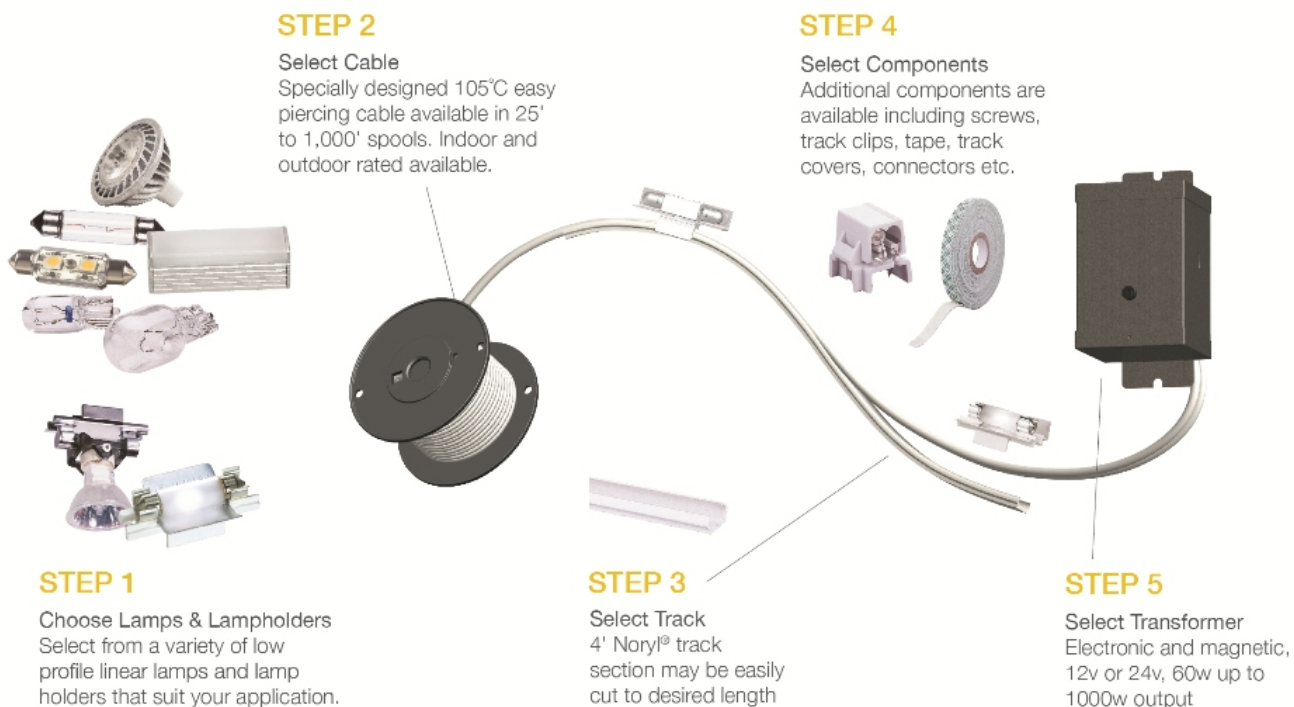
**Specifications**

<b>Item Number</b>	9443-15
<b>Finish</b>	White
<b>Dimensions</b>	L: 48" W: 7/8" H: 1 1/8"
<b>Safety Listing</b>	UL Listed for Dry Locations cUL Listed for Dry Locations cETL Listed for Dry Locations
<b>Warranty</b>	1-Year Warranty

**Shipping Information:**

Package Type	Product #	Quantity	UPC	Length	Width	Height	Cube	Weight	UPS Ship
Individual	9443-15	1	785652944352	47.9	1.1	0.8	0.024	0.2	Yes
Master Pack		10	10785652944359	48.8	4.8	2.6	0.352	3.6	Yes

**Component Diagram:**



7400 Linder Ave. | Skokie, Illinois 60077 | 800-347-5483  
© 2013 Sea Gull Lighting LLC, a Generation Brands Company.