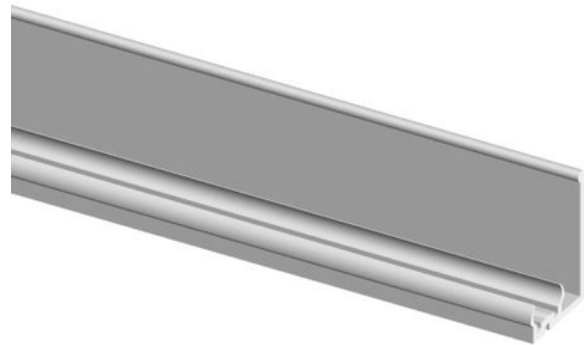


Job Name:		Item Number:	
Specifier Name:		Sales Agency:	
Specifier Contact:		Agency Contact:	
Fixture Type:		Comments:	
Quantity:		Approval:	

Lx Track Fascia Panel



L: 48" W: 7/8" H: 1 1/8"

Description

Noryl® fascia panel with integral track to support cable and lampholders. Use under shelves, inside cabinets or where system cannot be hidden behind within the existing environment. Track/fascia may be easily cut to various lengths. Nail, staple or use 9862 screws through pre-drilled holes to attach track/fascia to surface. High endurance double-faced tape is available for installation on glass and other smooth surfaces.

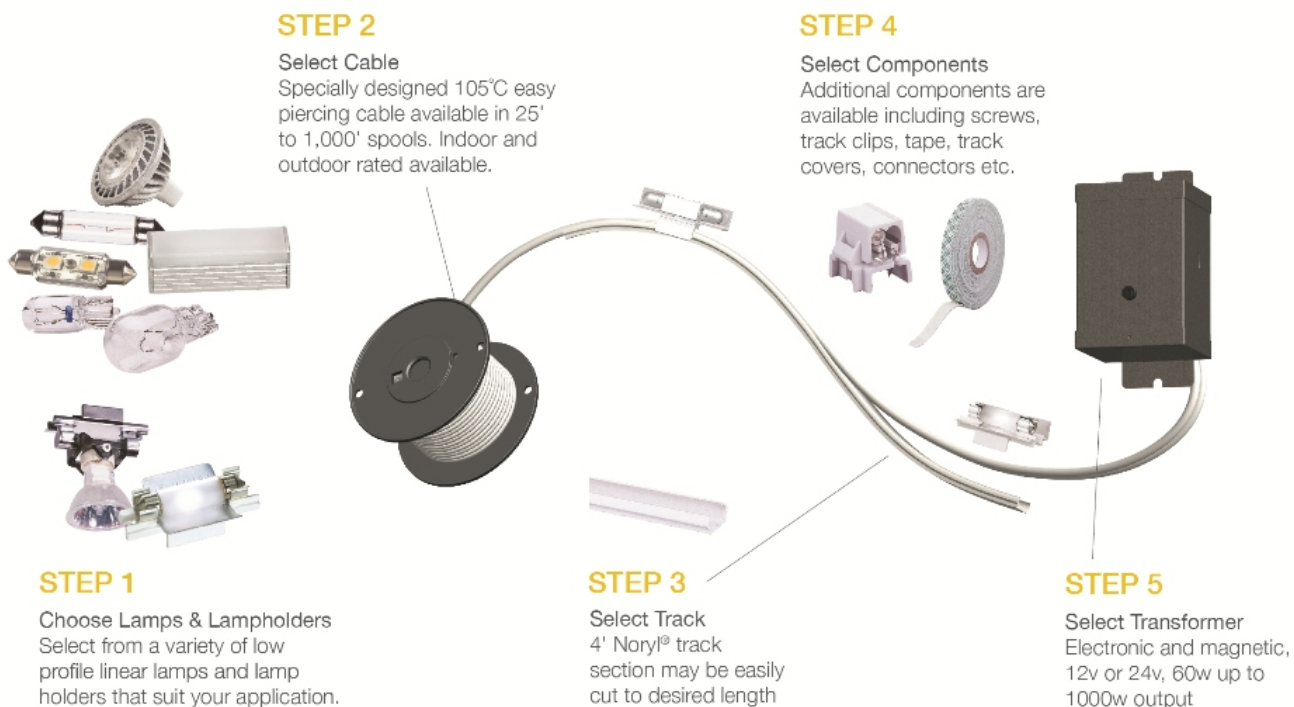
Specifications

Item Number	9443-12
Finish	Black
Dimensions	L: 48" W: 7/8" H: 1 1/8"
Safety Listing	UL Listed for Dry Locations cUL Listed for Dry Locations cETL Listed for Dry Locations
Warranty	1-Year Warranty

Shipping Information:

Package Type	Product #	Quantity	UPC	Length	Width	Height	Cube	Weight	UPS Ship
Individual	9443-12	1	785652944321	47.9	1.1	0.8	0.024	0.2	Yes
Master Pack		10	10785652944328	48.8	4.8	2.6	0.352	3.6	Yes

Component Diagram:



AMBIANCE
Lighting Systems

7400 Linder Ave. | Skokie, Illinois 60077 | 800-347-5483
© 2013 Sea Gull Lighting LLC, a Generation Brands Company.