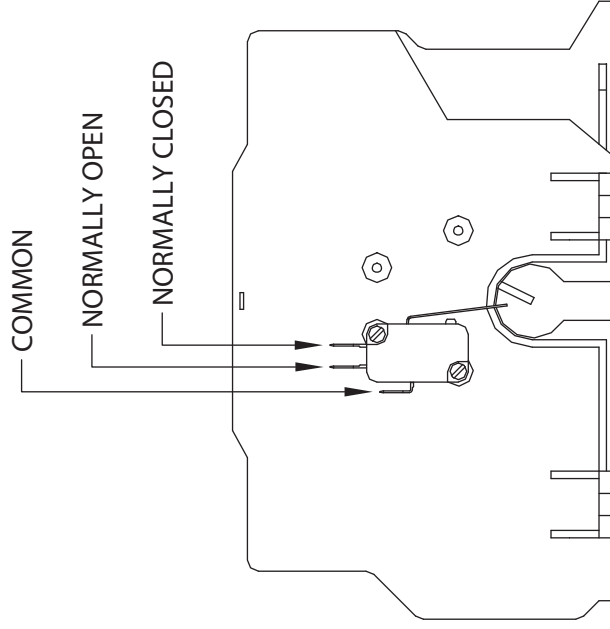
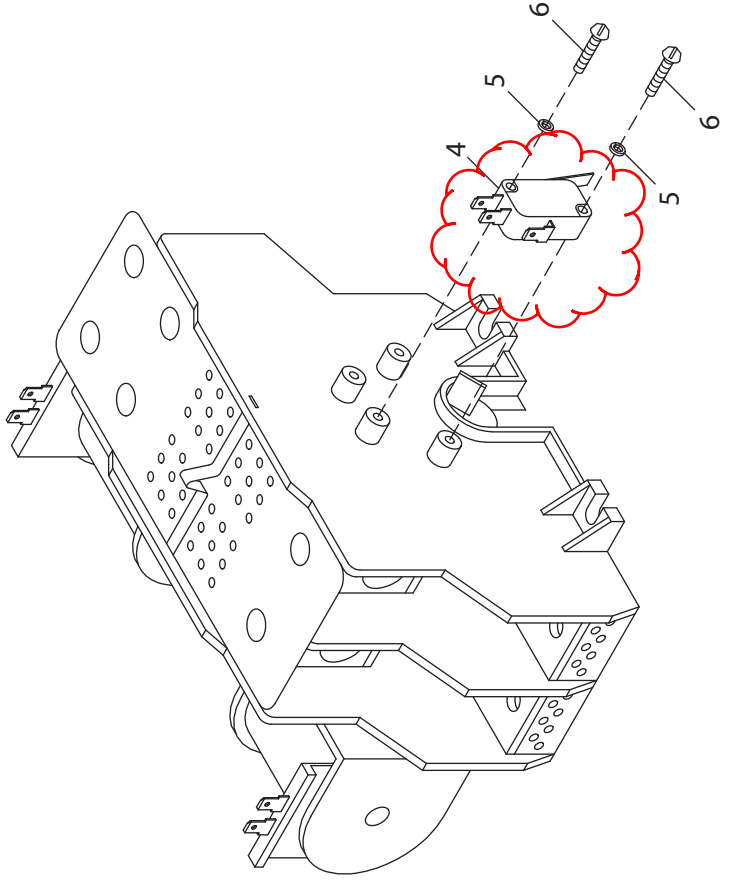
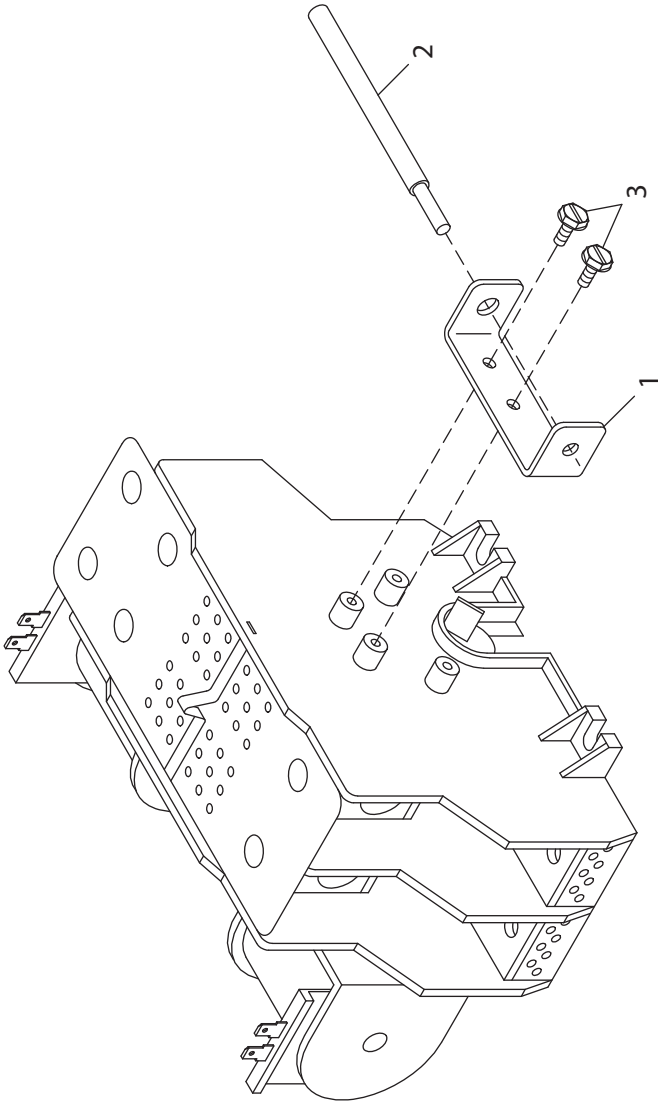


# GROUP H



VIEW "A"

APPLICABLE TO:

ITEM	PART #	QTY.	DESCRIPTION
1	0E6193	REF.	BRACKET ARM EXTENDER
2	0E6155	REF.	ARM EXTENDER PIN
3	064526	REF.	SCREW HWHS #6-25 X 3/8 ZINC
4	084464	1	LIMIT SW-SW OPERATION
5	043182	2	WASHER LOCK M3
6	027770	2	SCREW RHM #4-40 X 5/8

**INSTALLATION INSTRUCTIONS**  
**AUXILIARY CONTACTS FOR 100 AMP AND 200 AMP**  
**“HS” TYPE TRANSFER SWITCHES**

1. Remove bracket (I/N 1, P/N 0E6193), arm (I/N 2, P/N 0E6155) and screws (I/N 3, 064526) that retain the manual transfer handle located on the side of the contactor.  
**NOTE:** In some cases, the bracket assembly is mounted elsewhere in the transfer switch, if this is the case, please move to step 3.
2. Be sure to keep the manual transfer handle in a readily accessible area for future use.
3. Attach the auxiliary contacts (I/N 4, P/N 084464) to the side of the contactor with the supplied screws (I/N 6, P/N 027770) and washers (I/N 5, P/N 043182) at the diagonal hole locations as shown. Ensure that the activation lever extends to the cam on the contactor (See View “A”). The protruding tab on the cam will open and close the contacts as the electrical transfer takes place. *For switch activation upon **transfer to standby**, mount contacts as shown.*