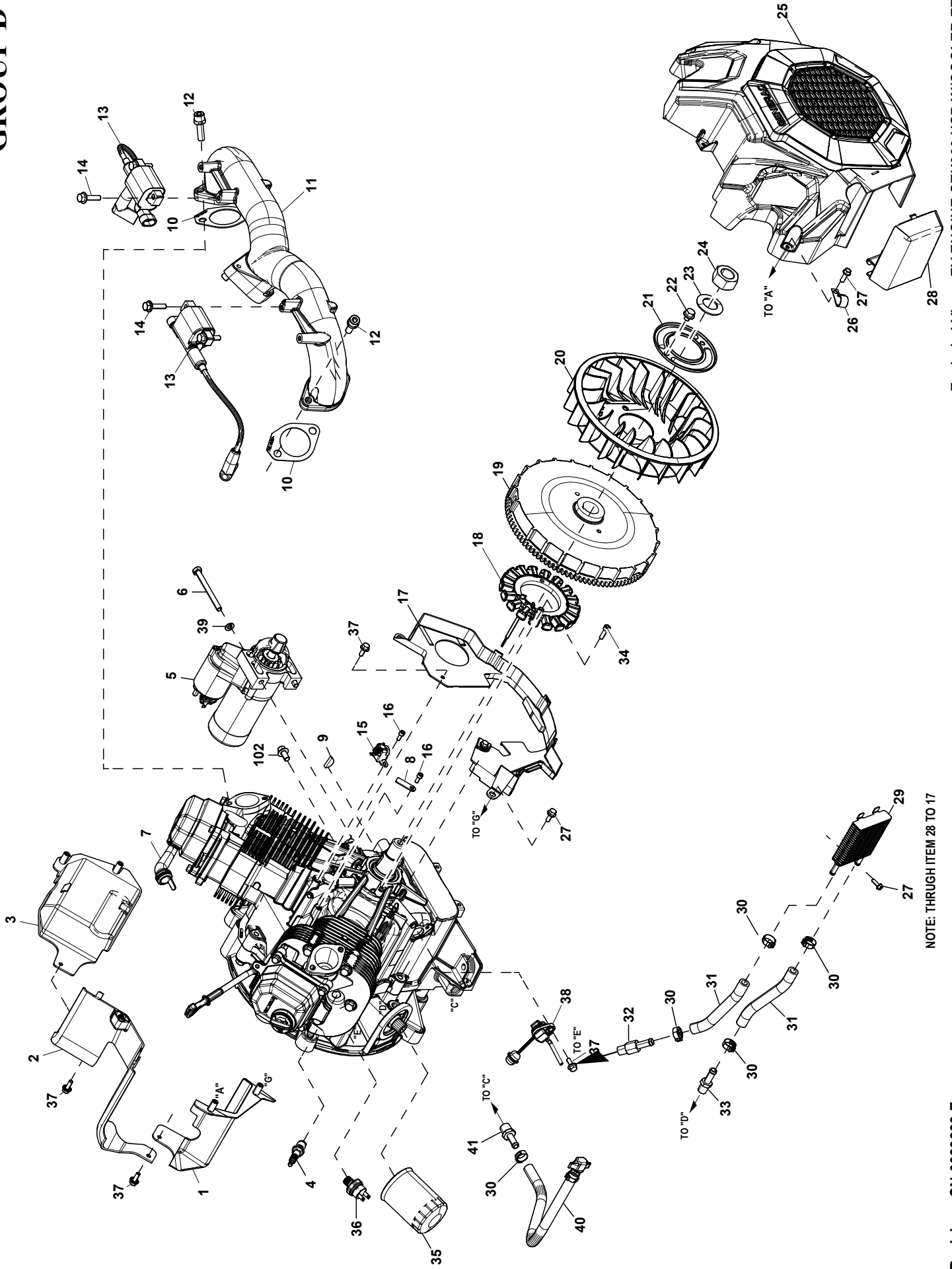
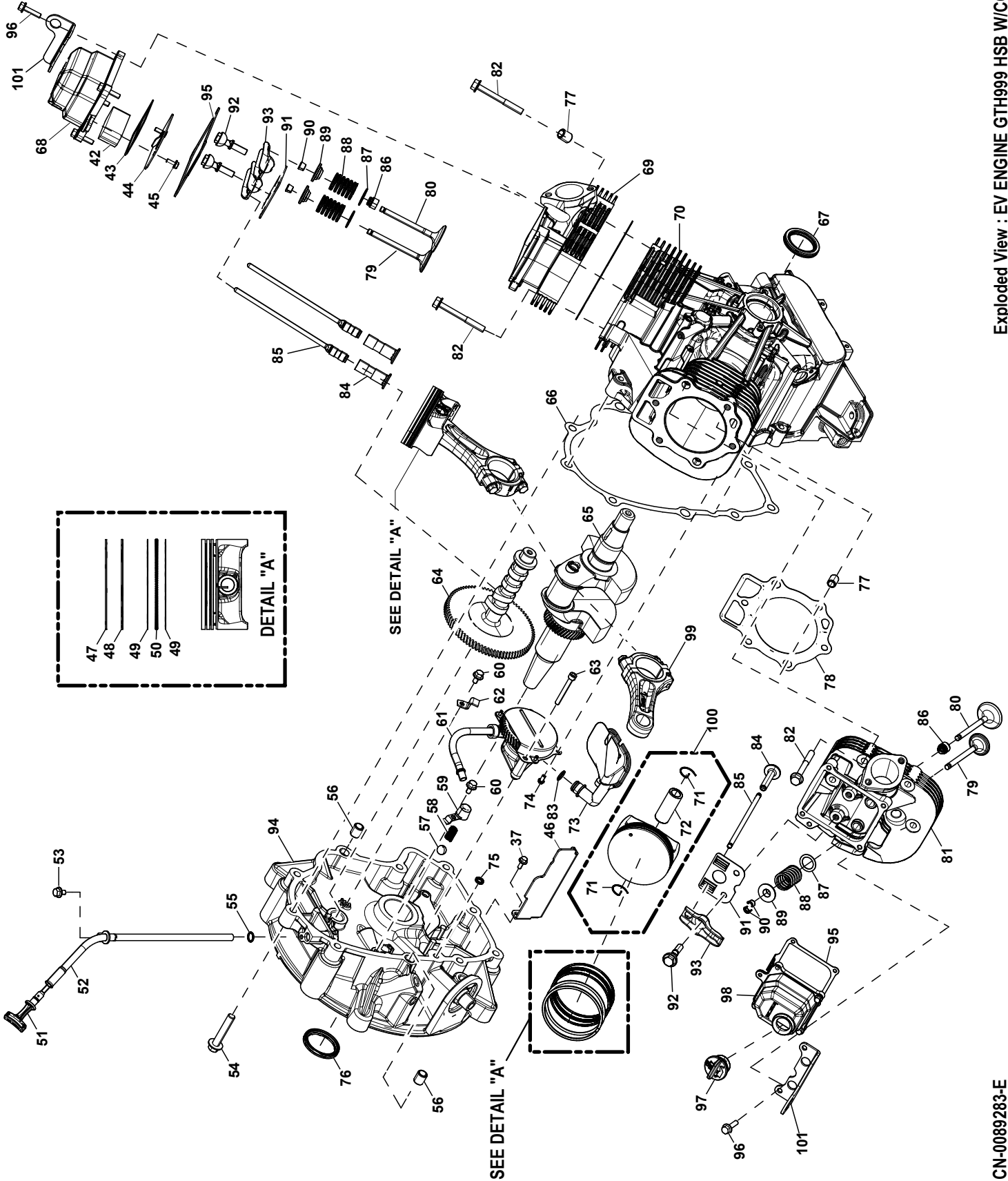


# GROUP D



# GROUP D



## EXPLODEDVIEW: EV ENGINE GTH999 HSB W/COOLER EFIC SOF

DRAWING#: A0000683033

GROUP D

APPLICABLE TO:

ITEM	PART#	QTY.	DESCRIPTION
1	A0000928858	1	WRAPPER CYLINDER 2 999
2	A0000930820	1	WRAPPER CENTER 999
3	A0000928855	1	WRAPPER CYLINDER 1 999
4	A0003637864	2	SPARK PLUG GENERAC GAP: 0.020"
5	A0000501971	1	STARTER MOTOR GEAR REDUCED 1KW
6	G061906	2	SCREW HHC M8-1.25 X 85 C8.8
7	A0002106230	1	BREATHER HOSE GH816 & GTH999 HO
8	A0000181147	1	CLAMP WIRE RETAINER
9	10000022810	1	KEY WOODRUFF 5 X 22
10	A0002074537	2	GASKET INTAKE 999CC
11	A0002074555	1	ASSY INTAKE 999CC W / PINS ANGLED HEAD
12	OG3730A	4	SCREW SHC M8-1.25 X 30 G8.8 SEMS
13	10000018146	2	ASSY IGNITION COIL W/ PLUG WIRE EPT 26MJ
14	G080318	4	SCREW HHFC M6-1.0 X 25 FTH G8
15	10000022384	1	SENSOR-CKP VR A/C ENGINE 18MM BODY
16	A0000283026	3	SCREW SHC M5-0.8 X 12 C8.8
17	A0000928849	1	BACK PLATE 999
18	A0001578584	1	STATOR-SINGLE PHASE DIA 138 OD 600MM HRN
19	10000022639	1	FLYWHEEL/RING GEAR 255MM FOR EFI
20	10000030322	1	FAN FLYWHEEL NYLON FOR EFI
21	OC3032	1	PLATE, FAN GV-990
22	0H4957	2	SCREW HHFCS M8-1.25 X 10 C8.8
23	OC3033	1	WASHER BELLEVILLE 25MM BOLT
24	OC3034	1	NUT HEX M24-2.0 G8 YEL CHR
25	A0000928844	1	COVER FAN 999
26	082121C	1	CLIP-J VINYL COAT .625 ID
27	OC9764	6	SCREW HH HI-LO 1/4-15 X 3/4
28	A0004538133	1	COVER OIL COOLER 999
29	10000037763	1	OIL COOLER 300 BTU HOOKS
30	OG3662	5	CLAMP, HOSE STEPLESS 17
31	A0006433012	2	HOSE 3/8 300DEG 5.2 LONG OIL
32	0L6346	1	BARB STR SAE 1/4NPT X 3/8 EXT
33	0L6345	1	BARB STR SAE 1/4NPT X 3/8 ST-Z
34	0L6110	2	SCREW SHC M6-1.0 X 20 C8.8
35	070185E	1	OIL FILTER 90 LOGO ORNG-CAN
36	0L2917D	1	LOW OIL PRES SWITCH 10 PSI NO
37	OG0926	9	SCREW HHFCS M6-1 X 16 G8.8
38	A0001880716	1	OIL LEVEL SENSOR-FLOAT 0-5V
39	G022129	2	WASHER LOCK M8-5/160
40	0H8131	1	ASSY HOSE OIL DRAIN ORG
41	0L6347	1	BARB STR SAE 3/8NPT X 3/8 ST-Z
42	10000040133	1	COALESCING MEDIA
43	10000045265	1	GASKET BREATHER
44	10000045274	1	ASSY BREATHER PLATE
45	0J4967	2	SCREW HHFC M5-0.8 X 12
46	A0003155124	1	SHIELD DEFLECTOR
47	OG2565A	2	RING PISTON TOP DIA 90
48	OG2565B	2	RING PISTON 2ND DIA 90
49	OG2565C	4	RING PISTON OIL RAIL DIA 90
50	OG2565D	2	RING PISTON OIL SPACER DIA 90
51	0H6859L	1	ASSY DIPSTICK GTH990 HSB
52	A0000303017	1	TUBE DIPSTICK GTH999 30 DEG
53	0D6147	1	SCREW HHFCS M6-1.0 X 10 G8.8 ZY
54	OC3006	30	SCREW HHFC M10-1.5 X 55 G8.8
55	OC3027	1	O-RING, 3/8 X 1/2 NITRILE
56	078699C	2	SLEEVE DOWEL PIN DIA.14
57	OC3010	1	BALL,1/2D OIL RLF GV
58	OC3009	1	SPRING, OIL RLF GV990
59	OC3011	1	COVER, OIL RLF GV-990
60	OG0919	2	SCREW HHFCS M6-1 X 12 G8.8
61	10000047784	1	ASSY OIL PUMP SKYFALL W/O O-RING
62	OC5998	1	CLAMP, OIL TUBE
63	OG6431	2	SCREW SHC M6-1.0 X 50 G8.8
64	10000002213	1	CAMSHAFT MACHINING 6.9 LIFT

**EXPLODEDVIEW: EV ENGINE GTH999 HSB W/COOLER EFIC SOF**

**DRAWING#: A0000683033**

**GROUP D**

**APPLICABLE TO:**

ITEM	PART#	QTY.	DESCRIPTION
65	A0005962510	1	ASSY CSHAFT 78.4MM 1:20 TAPER 5MM KEY
	(1) A0005962509	1	ASSY CSHAFT 78.4MM HSB TAPER 5MM KEY
66	0C2977	1	GASKET CCASE GV990
67	0K1534	1	SEAL CRANKSHAFT FLYWHEEL SIDE
68	A0001467813	1	ROCKER COVER GENERAC MCHD 91X80
69	A0001773455	1	ASSY HEAD CYL #1 GT-999 HO
70	A0000897602	1	CRANKCASE ASSMBLY PRESSURE LUBE 90MM
71	G071983	4	RETAINER PISTON PIN 20
72	0K6397	2	WRIST PIN 999 20X12X49
73	0E6098	1	SCREEN OIL PICKUP 45DEG GTH990
74	0F5458	1	SCREW HH HI-LO #10 X 3/8
75	0C5943	1	SEAL OIL PASSAGE GT
76	0K2035	1	SEAL CRANKSHAFT PTO SIDE
77	078699B	4	SLEEVE DOWEL PIN 12 DIA.
78	0C2978	2	GASKET CYLINDER HEAD GTV990
79	A0001799225	2	VALVE EXHAUST 31MM
80	A0001799224	2	VALVE INTAKE 38MM
81	A0002106857	1	ASSY HEAD CYL #2 GT-999 HO
82	A0003402218	12	M8 X 1.25-70 SEMS HEAD BOLT
83	0E8152	1	O-RING .49 ID X .07 THK 70DURO
84	10000014772	4	LIFTER HYDRAULIC ASSY
85	A0002384196	4	PUSHROD HLA 159.25 MM
86	10000021593	2	VALVE STEM SEAL 6 X 12.7
87	0C5371	4	WASHER VALVE SPRING
88	0L5489	4	SPRING VALVE GT999
89	0D2274	4	RETAINER, VALVE SPRING
90	G086515	8	KEEPER, VLV SPRING
91	A0001336192	2	PUSH ROD GUIDE PLATE
92	A0001336196	4	STUD ROCKER BALL
93	A0002527982	4	ROCKER ARM RATIO 1.5:1 HLA
94	A0003951626	1	GEAR COVER 42mm MACH 315mm ALT SOF
	(1) A0003951691	1	GEAR COVER 42mm MACH 10 in ALT SOF NOTCH
95	A0002791673	2	GASKET ROCKER COVER 80MM X 91MM
96	G080318	8	SCREW HHFC M6-1.0 X 25 FTH G8
97	093064A	1	ASSY, OIL FILL CAP
98	A0001467826	1	ROCKER COVER GENERAC MCHD 91X80 W/FILL
99	A0001541472	2	ASSY CONROD GT999 HO
100	0K6418	2	ASSY PISTON FLAT TOP 90 DIA
101	10000029025	2	BRACKET LIFT
102	0E9507	1	SCREW HHFC M8-1.25 X 14 W/M10 ZY

**NOTE:**

1) OPTIONAL FOR 10 IN ALT