

# GEBERIT SYSTEM ACCESSORIES

## Optional Waste Fittings

### SPECIFICATIONS

Installation accessories for Geberit Duofix concealed carriers. Accessories shall be for alternate waste fitting installations, including cast iron elbows, back-to-back, and horizontal runs.

### FEATURES

Installation accessories for:

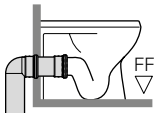
- Straight back
- Left hand or right hand runs
- Cast iron 90
- Back to back vertical or left hand/right hand runs

### WARRANTY

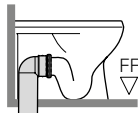
- One-year limited warranty against manufacturers' defect.

### Waste Fitting Discharge Configurations for Floor Mount Back Outlet Toilets

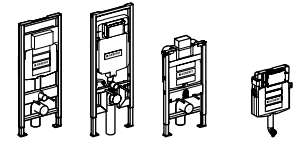
Note: Mounting collar/clamp by installer












**A.** Floor-Mount Rear Discharge into Wall



**B.** Floor-Mount Rear Discharge into Floor



| Description   | Model Number | 111.335<br>111.902 | 111.798<br>111.597 | 111.012<br>111.018 | 109.304                                       |
|---|--------------|--------------------|--------------------|--------------------|---|
|  PP connector set with bend for floor-mount toilets with mounting hardware, 1 x 90° bends with socket for Ø4.375" (Ø110 mm) push fit piping for Ø3.82"–4.21" (Ø97–107 mm) male connection and expansion to Ø4.375" (Ø110 mm) outlet                  | 152.647.00.1 |                    |                    |                    | ✓<br>(For A or B discharge. See illustration) |
|  HDPE waste fitting outlet bend, 1 x 90° bend with socket for Ø3.50" (Ø90 mm) push fit piping and Ø3.50" (Ø90 mm) outlet   | 366.061.16.1 |                    |                    |                    | ✓<br>(For A discharge. See illustration)      |
|  HDPE straight connector with socket for Ø3.50" (Ø90 mm) push fit piping and Ø3.50" (Ø90 mm) outlet x 12" (31 cm) long   | 366.887.16.1 | ✓                  | ✓                  | ✓                  | ✓<br>(For A discharge. See illustration)      |
|  HDPE connector with offset for LH horizontal drain connections (as viewed from sitting position), 1 x 90° bend with socket for Ø3.50" (Ø90 mm) push fit piping, with 45° offset and Ø3.50" (Ø90 mm) outlet for 5.5" (13.97 cm) minimum walls only.  | 366.913.16.1 | ✓                  | ✓                  | ✓                  | ✓<br>(For A discharge. See illustration)      |
|  HDPE connector with offset for RH horizontal drain connections (as viewed from sitting position), 1 x 90° bend with socket for Ø3.50" (Ø90 mm) push fit piping, with 45° offset and Ø3.50" (Ø90 mm) outlet for 5.5" (13.97 cm) minimum walls only. | 366.914.16.1 | ✓                  | ✓                  | ✓                  | ✓<br>(For A discharge. See illustration)      |
|  Cast iron fitting; 90° 3.5" (90mm) inlet, 3" outlet, 2" NPTF heel outlet<br><b>NEW! May 2018</b>  | 367.072.18.1 | ✓                  | ✓                  | ✓                  | ✓<br>(For A discharge. See illustration)      |
|  Cast iron outlet bend; 1 x 90° bend with socket for Ø3.50" (Ø90 mm) push fit piping and 3" CIP outlet   | 367.071.18.1 | ✓                  | ✓                  | ✓                  | ✓<br>(For A discharge. See illustration)      |
|  HDPE "Back-to-back" connector for horizontal drain connections; 2 x 90° bends with sockets for Ø3.50" (Ø90 mm) push fit piping, with 45° offset and expansion to Ø4.375" (Ø110 mm) outlet for 10.75" (27.31 cm) minimum walls only.               | 367.485.16.1 | ✓                  | ✓                  | ✓                  | ✓<br>(For A or B discharge. See illustration) |
|  HDPE "Back-to-back" connector for vertical drain connections; 2 x 90° bends with sockets for Ø3.50" (Ø90 mm) push fit piping and expansion to Ø4.375" (Ø110 mm) outlet for 10.75" (27.31 cm) minimum walls only.                                  | 367.923.16.1 | ✓                  | ✓                  | ✓                  | ✓<br>(For A or B discharge. See illustration) |

Note: Any of these fittings in combination with Geberit Duofix carriers are cUPC and IPC listed.



|                                    |                            |
|------------------------------------|----------------------------|
| <b>ARCHITECT/ENGINEER APPROVAL</b> | Variations Specified:      |
| Job Name: _____                    | _____                      |
| Date: _____                        | Customer/Wholesaler: _____ |
| Quantity: _____                    | Contractor: _____          |
| Model Specified: _____             | Architect: _____           |

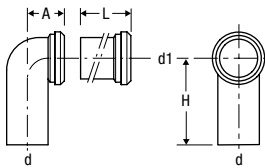
# GEBERIT SYSTEM ACCESSORIES

## Optional Waste Fittings

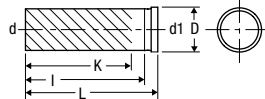
### DIMENSIONS

| Model Number | Pipe Material | d                   | d1                         | A                    | D                     | H                    | K<br>(Max. cut length) | L                  | a                | I                    |
|--------------|---------------|---------------------|----------------------------|----------------------|-----------------------|----------------------|------------------------|--------------------|------------------|----------------------|
| 152.647.00.1 | PP            | ø4" nom<br>(110 mm) | ø4"± 3/16"<br>(102 ± 5 mm) | 3 1/2" (9 cm)        | —                     | 9" (23 cm)           | —                      | 13 3/4" (35 cm)    | —                | —                    |
| 366.061.16.1 | HDPE          | ø3" nom.<br>(90 mm) | ø3" nom.<br>(90 mm)        | 4 3/8"<br>(11 cm)    | øv4 3/8"<br>(11.2 cm) | 8 7/8"<br>(22.5 cm)  | 5 1/8" (13 cm)         | —                  | —                | —                    |
| 366.887.16.1 | HDPE          | ø3" nom.<br>(90 mm) | ø3" nom.<br>(90 mm)        | —                    | ø4 3/8"<br>(11.2 cm)  | —                    | 9 7/16" (24 cm)        | 12 1/4"<br>(31 cm) | —                | 10 7/8"<br>(27.5 cm) |
| 366.913.16.1 | HDPE          | ø3" nom.<br>(90 mm) | ø3" nom.<br>(90 mm)        | 3"<br>(7.5 cm)       | ø4 3/8"<br>(11.2 cm)  | 4"<br>(10 cm)        | 6" (15 cm)             | 11 3/8"<br>(29 cm) | 1 3/4" (4.5 cm)  | —                    |
| 366.914.16.1 | HDPE          | ø3" nom.<br>(90 mm) | ø3" nom.<br>(90 mm)        | 3" (7.5 cm)          | ø4 3/8"<br>(11.2 cm)  | 4" (10 cm)           | 6" (15 cm)             | 11 3/8"<br>(29 cm) | 1 3/4" (4.5 cm)  | —                    |
| 367.071.18.1 | Cast Iron     | ø3" nom.<br>(84 mm) | ø3" nom.<br>(90 mm)        | 4 3/8"<br>(11 cm)    | ø4 3/8"<br>(11.2 cm)  | 5 7/8"<br>(15 cm)    | 1 1/2" (3.5 cm)        | —                  | —                | —                    |
| 367.072.18.1 | Cast Iron     | 3" nom.<br>(84 mm)  | 3" nom.<br>(90 mm)         | 4 3/8"<br>(11 cm)    | ø4 3/8"<br>(11.2 cm)  | 5 7/8"<br>(15 cm)    | 1 1/2" (3.5 cm)        | —                  | —                | —                    |
| 367.923.16.1 | HDPE          | 4" nom<br>(110mm)   | 3" nom.<br>(90 mm)         | 10 7/8"<br>(27.5 cm) | ø4 3/8"<br>(11.2 cm)  | 12 3/4"<br>(32.5 cm) | 7 1/2" (19 cm)         | —                  | 4 1/8" (10.5 cm) | —                    |
| 367.485.16.1 | HDPE          | 4" nom<br>(110mm)   | 3" nom.<br>(90 mm)         | 10 7/8"<br>(27.5 cm) | ø4 3/8"<br>(11.2 cm)  | 4" (10 cm)           | 4 3/4" (12 cm)         | 13 3/8" (34 cm)    | 4 1/8" (10.5 cm) | —                    |

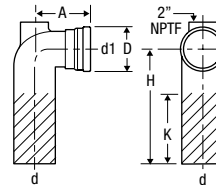
152.647.00.1



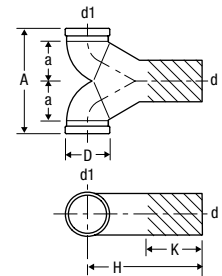
366.887.16.1



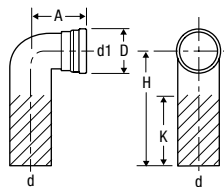
367.072.18.1



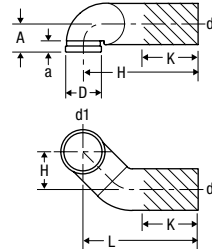
367.485.16.1



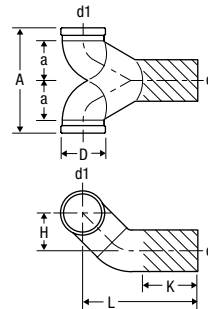
366.061.16.1  
367.071.18.1



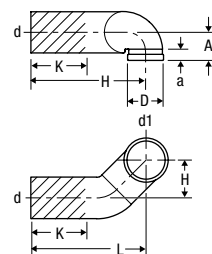
366.913.16.1



367.923.16.1



366.914.16.1



Geberit  
2100 S. Clearwater Drive  
Des Plaines, IL 60018  
USA

P 847-803-7777  
F 847-849-1845

www.geberit.us