

# Hands Free Actuators for Urinals

## Application

- For automatic "hands free" sensing and flush actuation, in hygienic or ADA compliant applications
- For public or residential spaces
- For new installations or retrofit to existing Geberit Duofix 111.625 urinal frame installs
- For low consumption urinal flushing volumes to 0.5 GPF (2 LPF)

## Product Specifications

- Stainless steel - Brushed stainless steel
- Detection distance: 4 - 20 in (10 - 50 cm)
- Flush time: 3 - 15 s (default time 4 s); can be manually adjusted
- Automatic hygiene flush: 24 h after last flush cycle
- Operating voltage: 3 V DC / Power input < 0.5 W
- Battery lifetime: Lithium – 2 years Alkaline – 1.5 years\*
- User detection time: 7 s
- Flow rate at 15 psi (1 bar): 3.8 gpm (0.24 l/s) as supplied, 4.7 gpm (0.3 l/s) without flow limiter
- Humidity < 100 % relative
- Operating pressure range: 14 - 116 psi (1 - 8 bar)
- Max. fluid temp: 86°F (30°C)

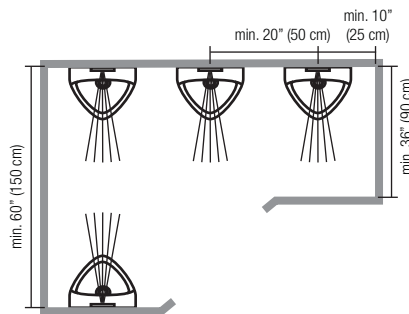
## Scope of Supply

- Cover plate with infrared window (replaceable), and with securing bar
- Infrared control, premounted on fixation frame
- Solenoid valve
- Fastening material
- Battery box and 2x "AA" lithium batteries\*
- 120 V 60 Hz or 230 V 50 Hz Class 2 Power supply included\*\*

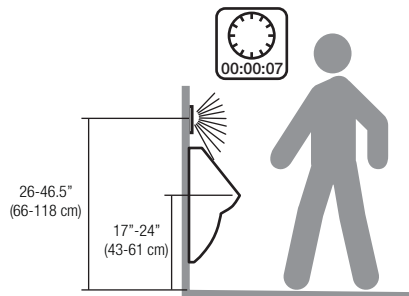
## Features

- Proven infrared triangulation detection method with background fade-out and auto-calibration to environment
- Latching solenoid valve with chloramine resistant EPDM diaphragm and protected by dual-stage filters
- "Low battery" warning (2-stage: flashing LED when battery starts to go low; continuous red light when cannot flush)\*
- Dynamic flushing time reduction during periods of high traffic to reduce water consumption

- Vandal resistant stainless steel cover plate and independent sensor electronics to prevent tampering
- Pre-installed electrical connectors with cross-polarity protection (one-way connection)
- Tool-free maintenance, with access to battery box and flush valve behind the actuator plate
- Battery change can be performed without turning off water\*
- Mounting frame overlaps wall by 5/8" (15 mm) to protect against water infiltration
- Standard dummy flush tube allows pipes to be flushed clean prior to installation of flush valve, lengthening valve life



With urinal flush controls a minimum distance of 36" (90 cm) to the opposite wall must be observed to ensure problem-free detection. If urinal flush controls are mounted on opposite walls, a distance of 60" (150 cm) must be observed. Urinal flush controls mounted next to one another must be at least 20" (50 cm) apart.

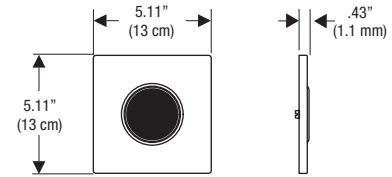


Installing highly reflective surfaces (such as mirrors) in the immediate vicinity of the urinal flush control should be avoided, as these can lead to incorrect releases and malfunctions.

Geberit product is ADA compliant when fixture and actuator are installed at proper heights.

## Dimensions

### Single-Flush Actuator Plates



## Finishes

### Hands Free Actuators

Style	Material	Finish	Model No.
Sigma10	Stainless Steel	Brushed SS (Battery/DC Power)	116.035.SN.1
		Brushed SS (AC Power – CLASS 2 power supply transformer included)	116.025.SN.1



## Warranty

Electronic components:  
2 years from installation  
Finish: 5 years (residential); 1 year: public  
Flush valve: 10 years

\* Battery version only.  
\*\* AC version only.



## ARCHITECT/ENGINEER APPROVAL

Job Name \_\_\_\_\_

Date \_\_\_\_\_ Quantity \_\_\_\_\_

Model Specified \_\_\_\_\_

Variations Specified \_\_\_\_\_

Customer/Wholesaler \_\_\_\_\_

Contractor \_\_\_\_\_

Architect \_\_\_\_\_