

GAMA SONIC®

SOLAR LIGHTING

POLARIS SOLAR WALL LIGHT

US Patent # 9458970

Instruction Manual

Model: GS-177W



Introduction

Thank you for your purchase! **GAMA SONIC®** solar charged accent lighting eliminates the problems associated with most solar lighting available today. **GAMA SONIC®** solar charged lights are brighter and last all night with a typical solar charge. Unique design, superior light output and numerous installation options confirm the outstanding value of our product.

GAMA SONIC® has been recognized as a worldwide leader in the lighting industry for over 20 years. The company also offers unique multi-purpose rechargeable products that range from party lights to emergency lighting products.

Technical Assistance/Warranty Claims/Replacement Parts

Toll Free Number: **+1-800-835-4113** (only within the US) or www.gamasonic.com

Visit our website or download the latest version of your instruction manual:

www.gamasonic.com or www.gamasonic.com/user-guides

Please read the instruction manual carefully to obtain the best results from your purchase.

WARNING: GAMA SONIC® Light bulbs are built and designed for Gama Sonic products only. They are not designed to be used in other electrical sockets. For the same reason, regular AC and/or Low Voltage bulbs cannot be used in Gama Sonic products.

NOTE: If you are replacing an existing gas/electric wall light, you must consult a certified technician to cancel them before installation.

Solar Wall Light Location

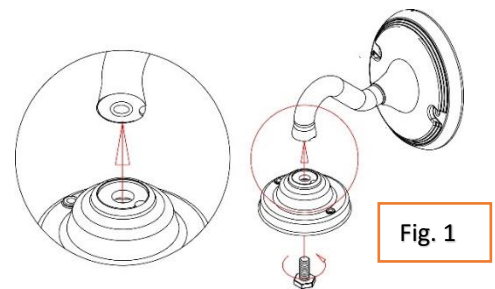
For optimum light duration throughout the night, it is very important to mount your solar light in a spot where it will receive the maximum amount of direct sunlight throughout the day. The solar light must be charged in full sun for two days in the "ON" position for the best results.

NOTE: The following steps are for reference only. Consult your local hardware store for the best installation method for your chosen surface.

Assembly Instructions:

Step 1:

Connect the plate to the wall bracket, align it with the slots (**Fig. 1**). And secure the plate to the wall bracket with provided screw.

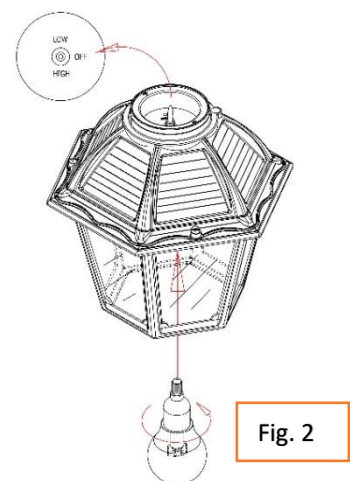
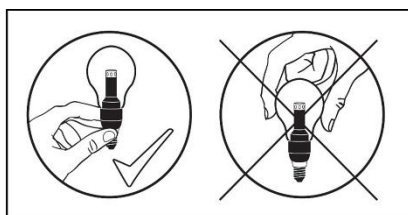


Step 2:

The GS Solar LED Bulb is designed to last up to 10 years, however if it doesn't work, or if you want to use different color temperature bulb, it can be easily replaced.

Install the new GS Solar LED Bulb by turning into the bulb socket clockwise (**Fig. 2**).

NOTE: Make sure to grip the light bulb by the base only and NOT the glass lens (**Fig. 3**).



Step 3: Turn the light On.

Turn the operation switch to the Low or High position (**Fig. 4**) according your preferences:

- a. (Low) For softer light and longer duration.
- b. (High) For brighter light output.

The solar lamp will automatically operate at dusk.



Fig. 4

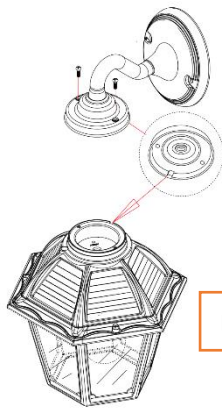


Fig. 5

Step 4: Complete the assemble process

Connect the assembled wall mount to the top of the light using 2 provided screws, making sure it's aligned with the slots (**Fig. 5**).

Step 5: Mounting the Light to the wall (Fig. 6)

You are ready to mount the light fixture on the wall.

1. Use a drill to make two holes in the wall where the lamp will be mounted. (use the wall mount as a template for drilling locations)
2. Place the anchors into the holes and place the lamp in line with the holes.
3. Secure using provided screws.

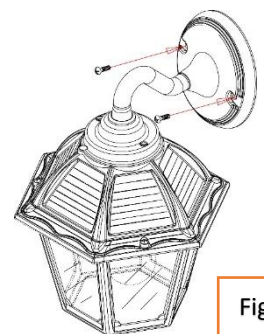


Fig. 6

Replacing the Battery

(After several years of use, the battery may need replacing.)

1. Unscrew the three screw caps and detach the top.
2. Make sure the ON/OFF switch is in the OFF (O) position.
3. Unscrew the battery compartment (**Fig.7**) located on the silver reflector and remove the compartment door.
4. Unclip the connector and remove the old battery.
5. Make sure the new battery is a Gama Sonic – 3.2V/1,500mAh, Li-ion Rechargeable Battery with a connector.
6. Clip on the new battery and install it into the battery compartment. Re-Install the battery compartment cover.
7. Repeat steps 3 to 6 for the second battery.
8. Reattach the top and secure it with the three screw caps.

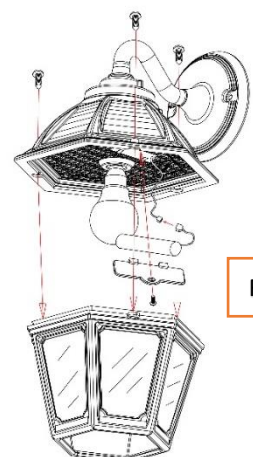


Fig. 7

**** Gama Sonic batteries are available at www.gamasonic.com**

You can purchase it directly at: <https://gamasonic.com/product-category/parts-and-accessories/> . Make sure the new battery is a [Gama Sonic - 3.2V/1,500mAh](#), Li-ion Rechargeable Battery with a connector.

**** Gama Sonic Bulbs are available at www.gamasonic.com**

You can purchase it directly at: <https://gamasonic.com/product-category/parts-and-accessories/>
Make sure the new bulb you purchase is compatible with this model (A50 bulb)

Maintenance

Clean the solar module regularly with a damp towel to guarantee optimum performance of the solar panel. Do not use any type of solvent for cleaning and be careful not to put too much pressure on the module while cleaning.

Trouble Shooting

If your solar charged light does not come on at dusk despite observance of all the instructions, please try the following steps:

1. Make sure that the solar light is not being affected by any other light source.
2. Ensure the solar light is not positioned in the shade during the day.
3. Make sure the switch in the lamp head is in NOT on the " OFF" position.
4. Check that the batteries are installed correctly.
5. Check that the GS Solar LED Light Bulb is installed correctly.

WINTERTIME TIPS: Keep snow and debris cleaned off the solar panels so the batteries can recharge. If the lights are covered with snow for an extended period of time, after the snow melts, allow all the batteries to charge in full, direct sunlight for at least 6 hours to their maximum capacity.

WARNING: Please keep out of reach of children. Do not dispose of Li-Ion battery in the regular trash, municipal waste stream or by fire as batteries may leak or explode. Do not open, short circuit, or mutilate batteries as injury may occur. Preserve our environment by recycling Li-Ion batteries or disposing of them in accordance with local, state and federal regulations. Do not mix old and new batteries.

