



400 series vacuuming drawer DV 461

DV 461 710

Stainless steel-backed glass front.
Width 24" (60 cm), Height 5 1/2" (14 cm).

Included accessories

- 50 vacuuming bags, small.
- 50 vacuuming bags.
- 1 raised vacuuming platform.
- 1 adapter for vacuuming outside the chamber.
- 1 vacuuming hose.
- 1 adapter for bottle plugs.
- 3 plugs for vacuuming of bottle.

Optional accessories

Part No. 00578813

Vacuuming bags, small.
7" x 11", 100 pcs.

Part No. 00578814

Vacuuming bags, large.
9 1/2" x 14", 100 pcs.

Highlights

- Integrable in 5 1/2" high cut-out.
- Hygienic stainless steel vacuuming chamber, applicable height up to 3 5/32".
- 3 vacuuming levels for vacuuming in the chamber, max. 99%.
- 3 vacuuming levels for vacuuming outside the chamber, max. 90%.
- Automatic connection recognition for vacuuming outside the chamber.
- Handleless drawer.
- Cushioned closing system.
- Net volume 0.25 cu.ft.

Application

Vacuuming for sous-vide cooking.
Vacuuming for fast marinating and flavoring.
Vacuuming for extended storage.
Vacuuming of vacuuming containers outside the chamber.
Resealing bottles outside the chamber.

Operation

Touch key operation.
Recessed grip at the front bottom of the drawer.

Features

Capacity load max. 22 lbs.
Maximum size of vacuuming bags
W 9 1/2" x L 14".
3 heat-sealing levels for different strengths of bag material.
Sealing bar, non-stick coating, removable.
Safety glass cover, opens automatically after vacuuming.
Raised vacuuming platform, 1 3/4", deployable.
Utility space in vacuuming chamber, W 8 1/4" x L 10 3/4".
Membrane for avoiding reflux of liquids during vacuuming outside the chamber.
Drying program for vacuuming pump.
Warning function.

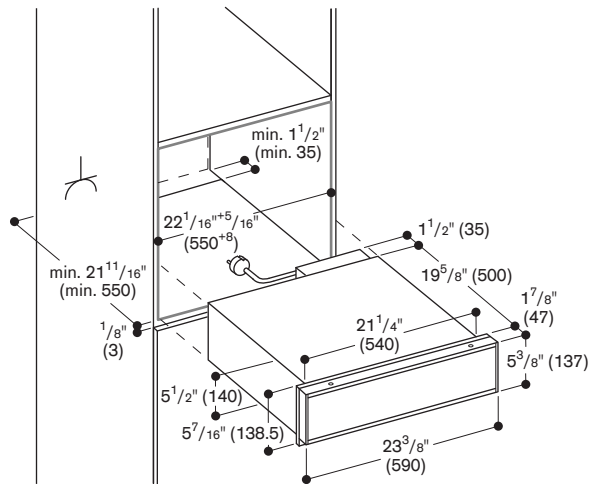
Planning notes

The front of the appliance extends 1 1/8" from the cabinet carcass.
Installation of BS Combi-steam oven/
BM Combi-microwave oven/CM
espresso machine directly above
drawer in 24" cutout without a
partition shelf in between.
Built-in under countertop or in single
cut-out.
When mounting the drawer below the
400 series Combi-steam oven, plan a
recess of at least 1 3/8" between the
back wall and the drawer to allow for
the inlet and outlet hose to be
installed appropriately.
The electrical outlet can be planned
behind the appliance.

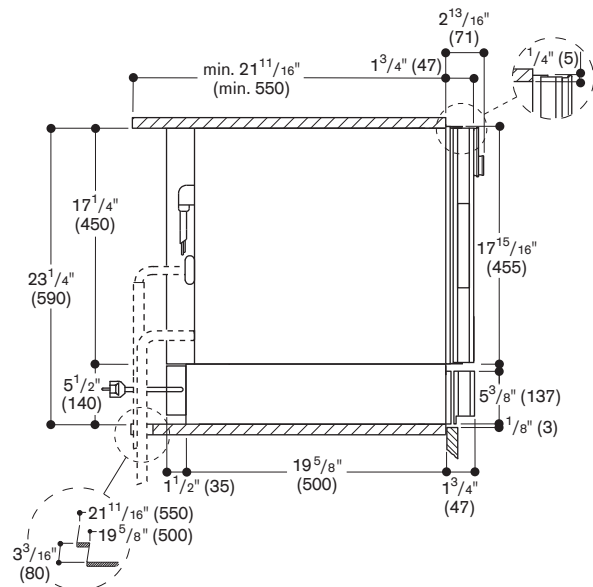
**Please read the installation details
regarding oven combination on
page 12-13.**

Rating

Total rating: 520 W.
Total Amps: 5 A.
120 V / 60 Hz
Connecting cable 71" with plug.



Side view of DV 461 below BS Combi-steam oven, BM Combi-microwave oven, CM espresso machine



Numbers indicated
inside parenthesis () = mm

www.gaggenau.com/us
Revised: March 2025