



SILAS

INSTALLATION GUIDE

FCB4272 - D

CONTENTS:

Cabinet.....FCB4272 - D.....PAGE 2

Top.....FCT2472 - D.....PAGE 4



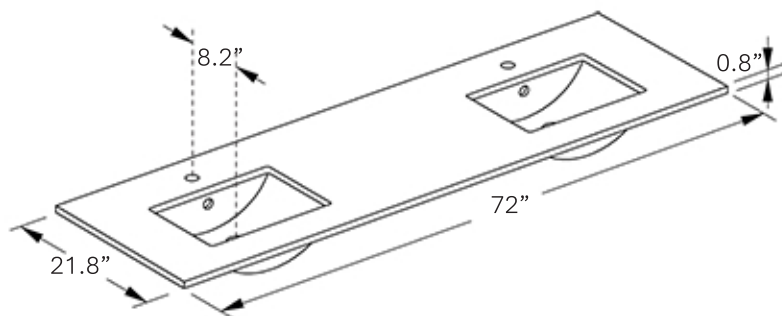
FCB4272 - D SILAS INSTALLATION GUIDE



CONTENTS

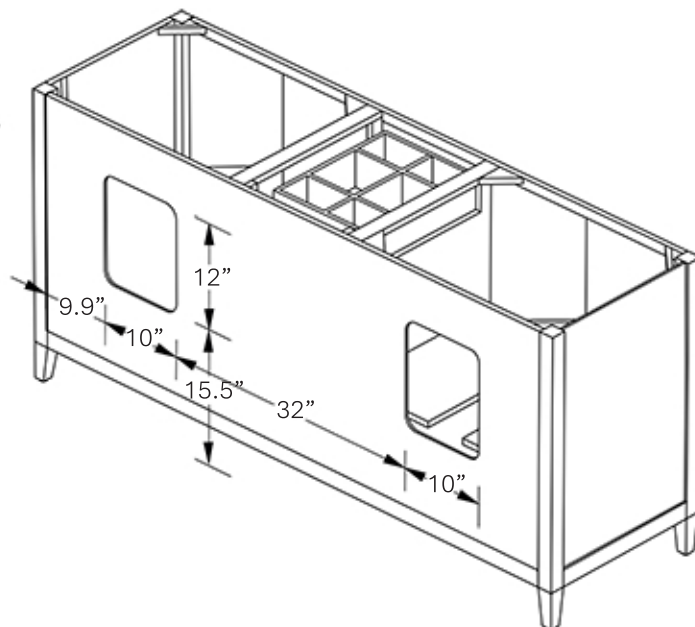
FCT2472 - D

Top Front



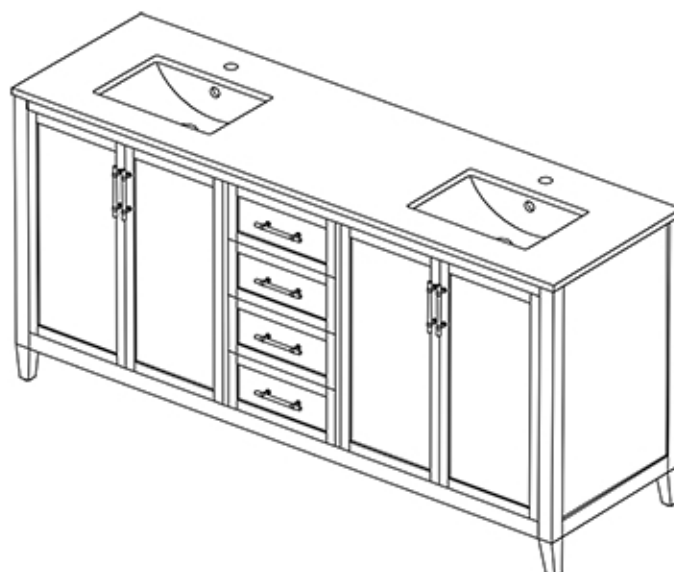
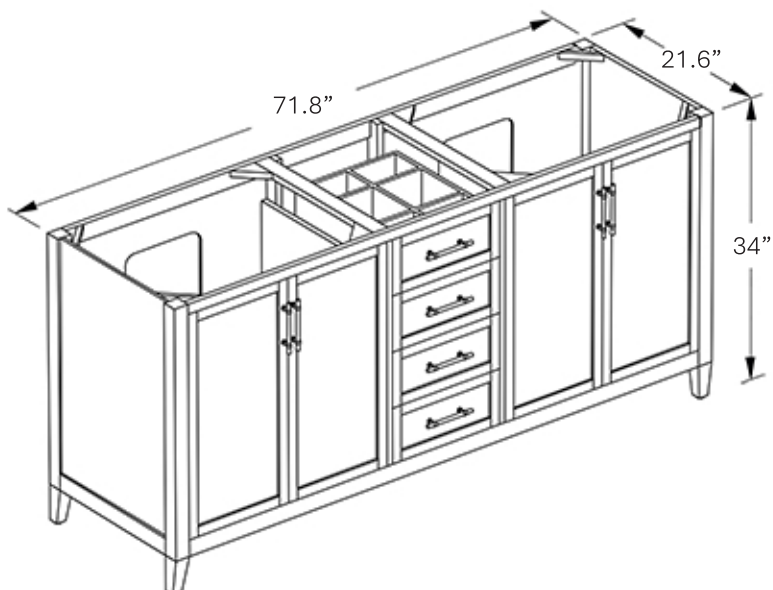
FCB4272 - D

Cabinet Back



FCB4272 - D

Cabinet Front



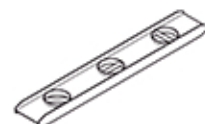
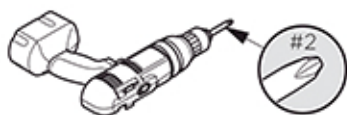
>All dimensions & specifications are approximate and subject to change without notice.



FCB4272 - D SILAS INSTALLATION GUIDE



TOOLS FOR ASSEMBLY



HARDWARE



(H1) x 16

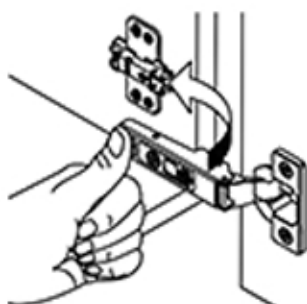


(H2) x 8

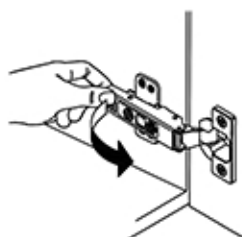
ASSEMBLY INSTRUCTIONS

1

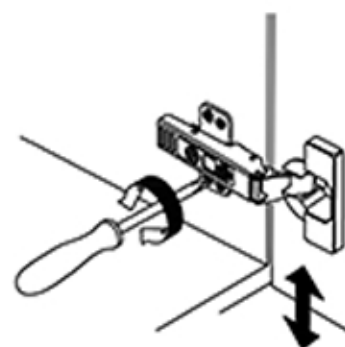
Adjustment of Door Hinge



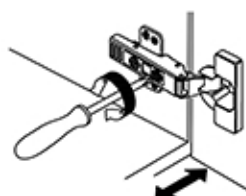
Install



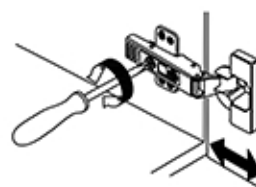
Remove



Adjust height



Adjust laterally

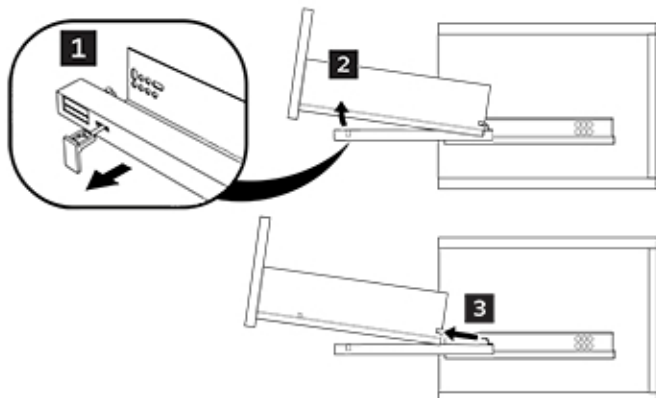


Adjust depth

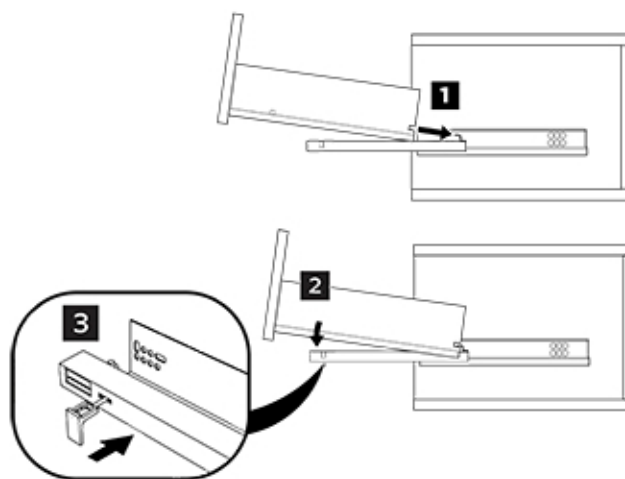
2

Drawer removal and installation

DRAWER REMOVAL



DRAWER INSTALLATION



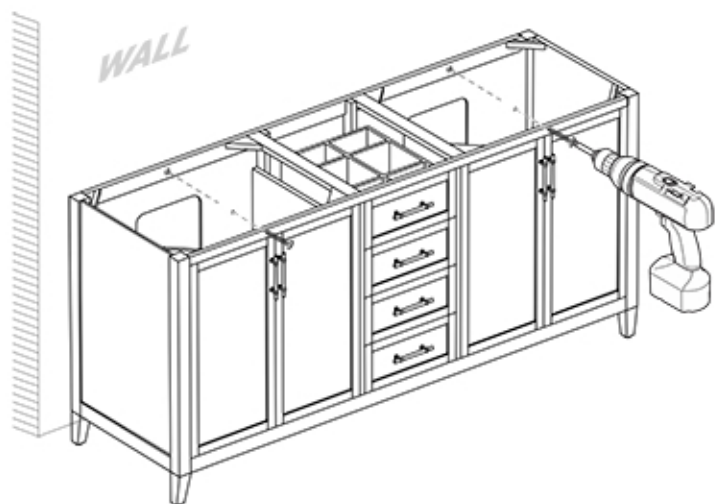


FCB4272 - D SILAS INSTALLATION GUIDE

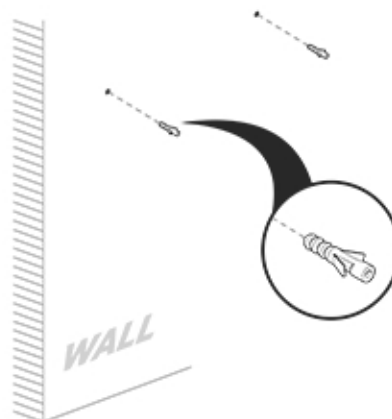


CABINET INSTALLATION

- 1** Mark anchor mounting hole locations on the wall as shown. Attach cabinet to the wall.

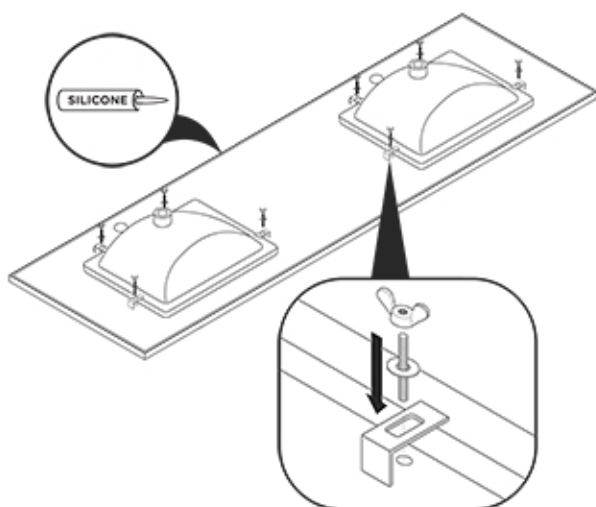


- 2** Drill holes in the wall and insert the anchors.



IMPORTANT: Consult an expert for the proper screws/bolts to use when attaching to various constructions. Screws provided do not attach to all wall construction types. Anchors are not required if brackets are installed in stud.

- 3** Flip counter top upside down and attach sink to it using provided brackets & screws. Apply silicone sealant bead between sink top and bottom side of vanity top.



- 4** Apply silicone to the top of the cabinet (A) and place counter top with sink (B) already attached to it. Apply silicone bead between vanity and vanity top.

