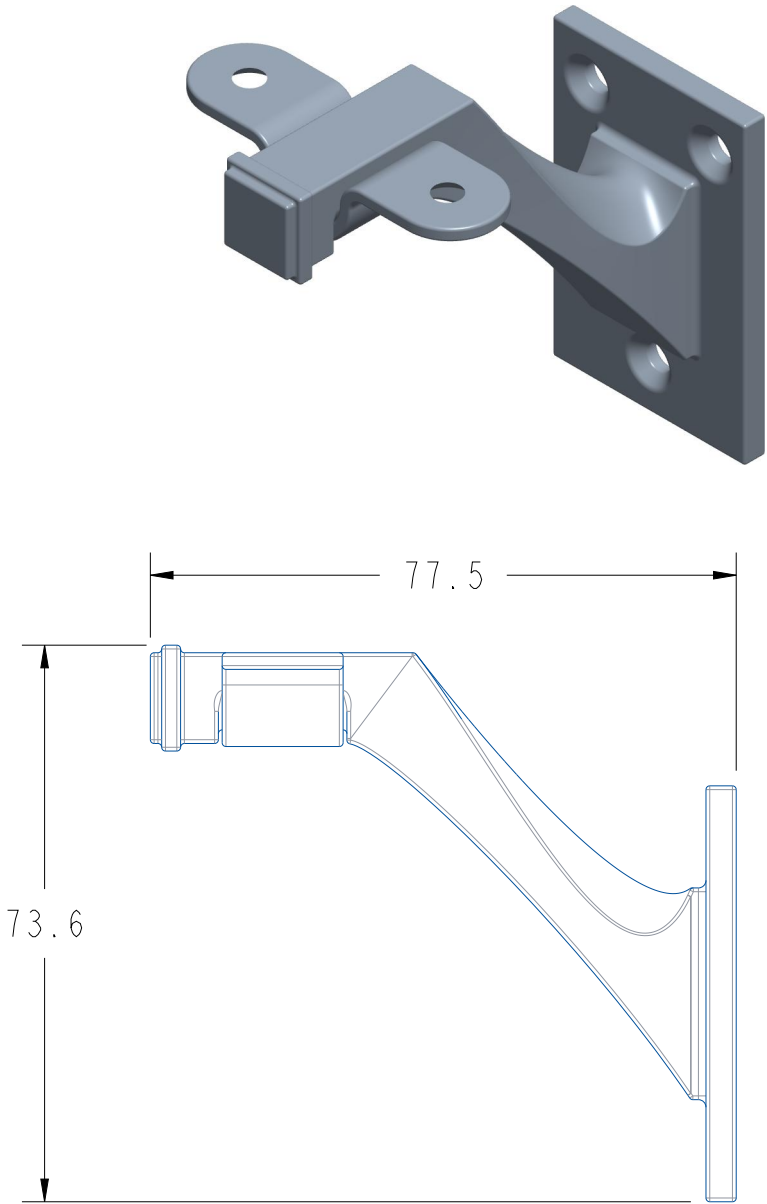
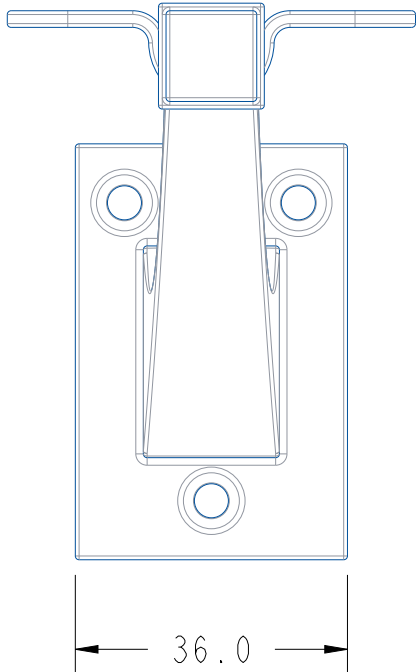
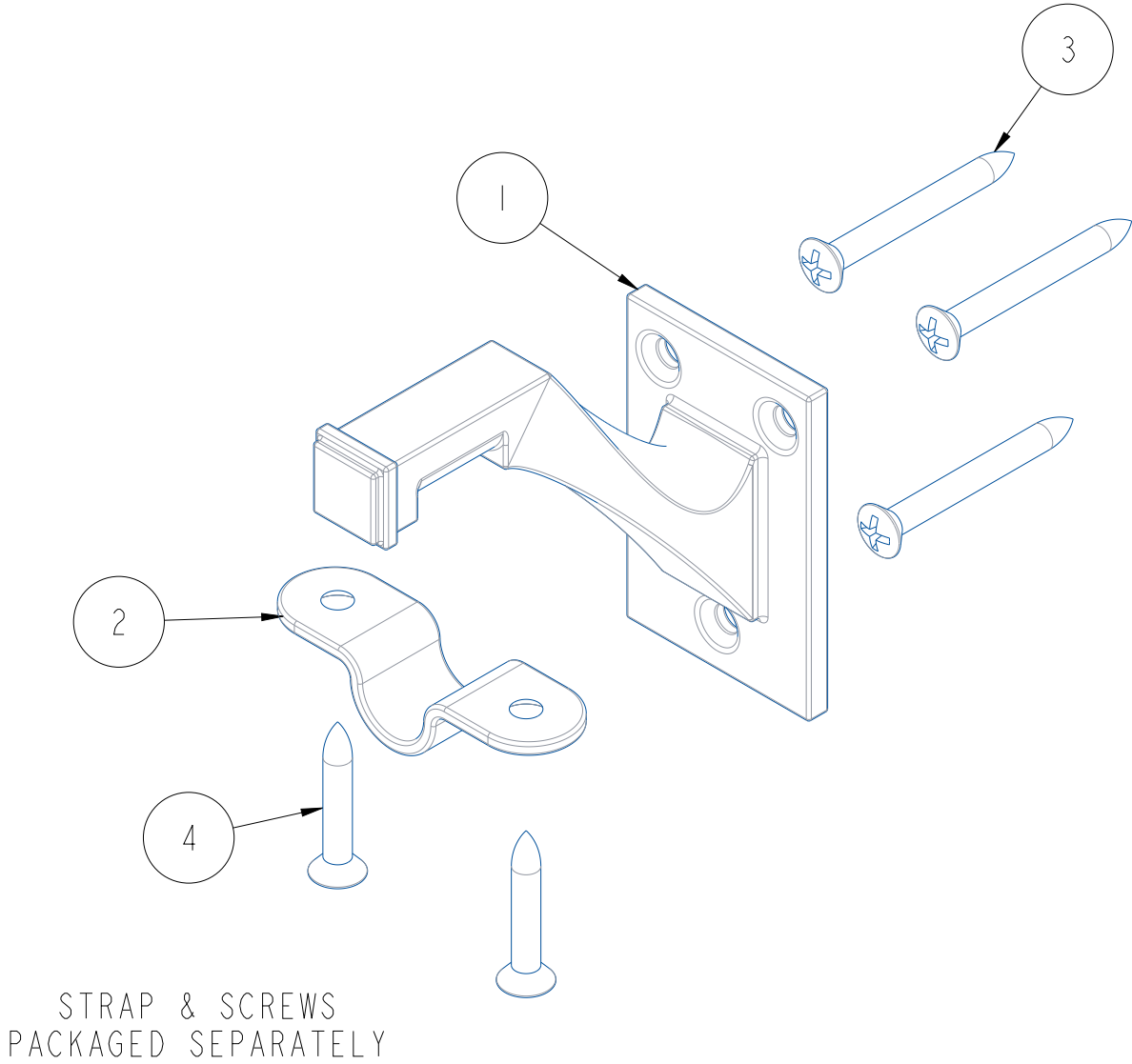


- NOTES:
- 1. DEBURR AND BREAK ALL SHARP EDGES. MEET UL 1439
 - 2. PART SURFACES TO BE FREE OF TOOL MARKS.
 - 3. DO NOT SCALE DRAWING, FOR DETAIL DIMENSIONS REFER TO 3D FILE.
 - 4. MATERIAL: SEE COMPONENT DRAWINGS.
 - 5. FINISH TO PASS LIBERTY HARDWARE QC-0034.
 - 6. PARTS AND ASSEMBLIES ARE TO MEET OR EXCEED MINIMUM TEST SPECIFICATIONS REQUIRED BY ANSI/BHMA A156.16
 - 7. BACK OF PRODUCT TO BE MARKED: L H M C © 2020.

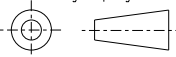
REV.	DESCRIPTION	DATE	ENG.
A	INITIAL DRAWING	7-21-22	MG
B	UPDATED DIMENSIONS	9-12-22	MG
C	UPDATED DIMENSIONS	8-8-23	MG
D	REVISED DESIGN	9-25-23	MG
State: Design			
Modified On: 19-Sep-23 04:10:56 PM			



ITEM NO.	PART NUMBER	DESCRIPTION	QTY	MATERIAL	WEIGHT EA (g)	DRAWING NUMBER
1	TBD	COORD Classic Edge HRB ARM	1	ZAMACK_3	128.2	47253
2	TBD	COORD HRB STRAP	1	STEEL	15.8	47283
3	STPOE80	#8 X 1-1/2 PHILLIPS OVAL HEAD TAPPING SCREW	3	STEEL	4.2	NO DWG
4	STPOE8L	#8 X 1" PHILLIPS OVAL HEAD TAPPING SCREW	2	STEEL	2.9	NO DWG

NOTICE: PROPRIETARY INFORMATION

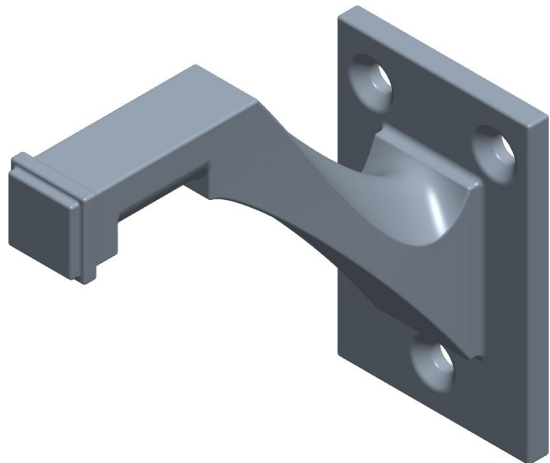
THESE DRAWINGS AND SPECIFICATIONS ARE THE PROPERTY OF LIBERTY HARDWARE, MFG CORP. AND ARE NOT TO BE REPRODUCED, COPIED OR USED AS THE BASIS OF MANUFACTURE OR SALE OF APPARATUS AND DEVICES WITHOUT PERMISSION. THESE DRAWINGS AND SPECIFICATIONS CONTAIN COPYRIGHTED INFORMATION THAT IS PROPRIETARY TO LIBERTY HARDWARE AND SHALL NOT BE DIVULGED IN ANY WAY WITHOUT PERMISSION.

Third-angle projection 		LIBERTY HARDWARE LIBERTY HARDWARE MANUFACTURING CORPORATION 140 Business Park Drive Winston-Salem, NC 27107		DWG. SIZE B (11 x 17 in.)	
TOLERANCE MM TOL. UNLESS NOTED X. = ±1. X.X = ±0.5 X.XX = ±0.1 HOLES: ±0.1 ANGLES: ±1.0	Dr. By:	DESCRIPTION: COORD Classic Edge HRB			
	<u>MG</u>				
	Ck. By:	DWG #.	SHEET.	WT. (grams)	
	ENG. Appd:	47253	1 OF 2	162.2	
	SCALE:				
<u>1.000</u>	PART #.	TBD		REV.	
DATE:					A
07/21/22					

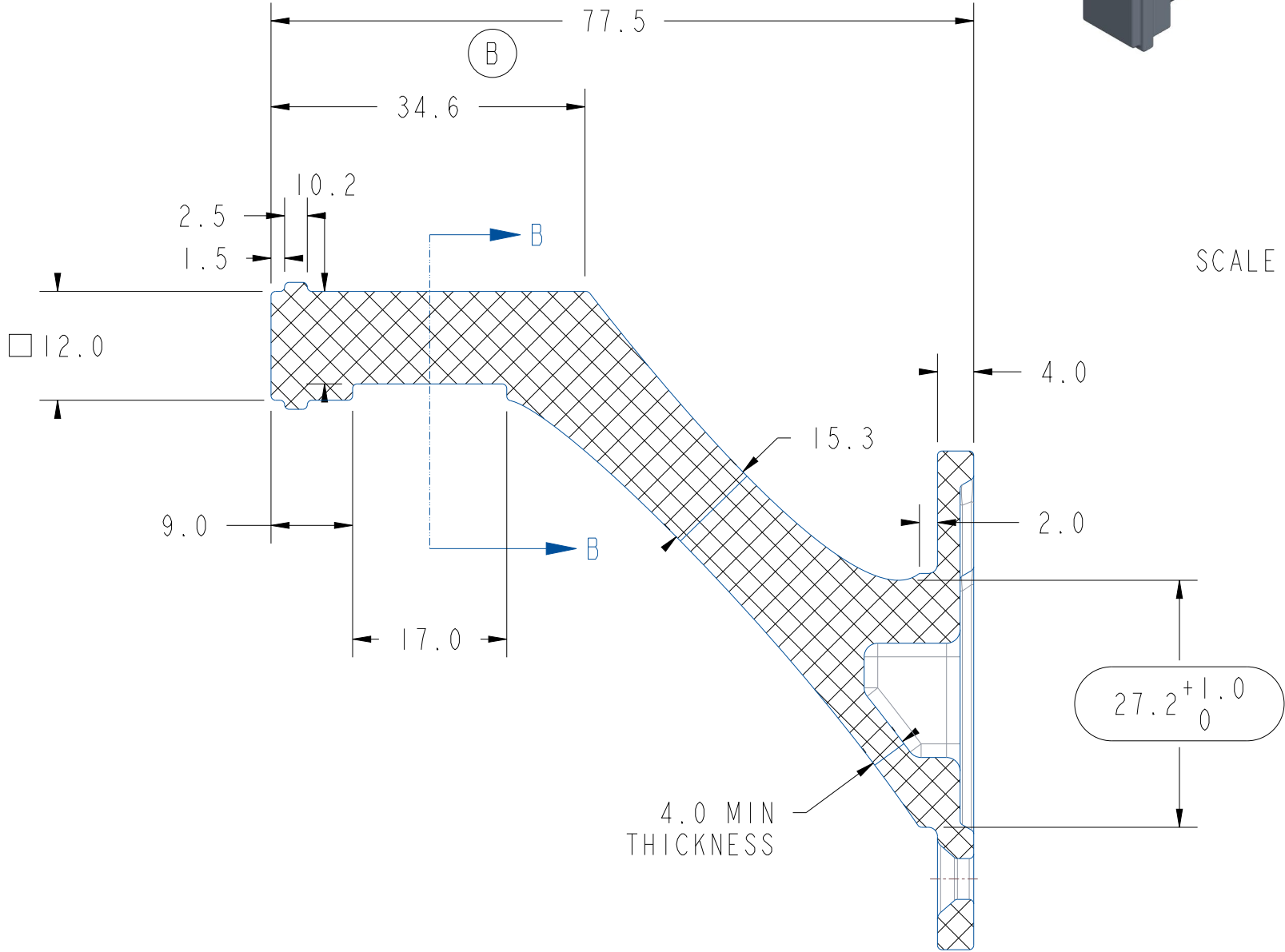
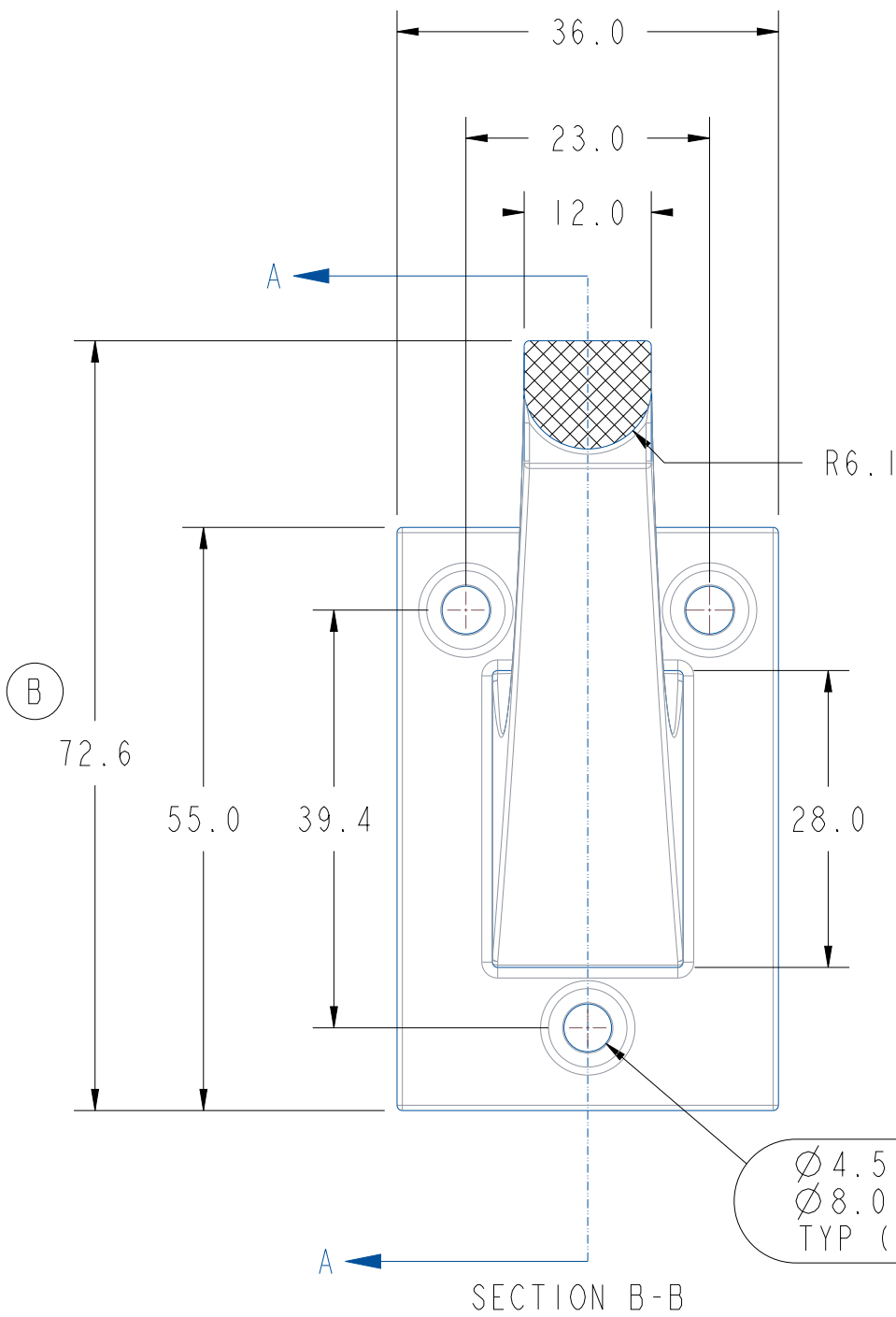
- NOTES:
- 1. DEBURR AND BREAK ALL SHARP EDGES. MEET UL 1439
 - 2. PART SURFACES TO BE FREE OF TOOL MARKS.
 - 3. DO NOT SCALE DRAWING, FOR DETAIL DIMENSIONS REFER TO 3D FILE.
 - 4. MATERIAL: ZAMACK 3.
 - 5. FINISH TO PASS LIBERTY HARDWARE QC-0034.
 - 6. PARTS AND ASSEMBLIES ARE TO MEET OR EXCEED MINIMUM TEST SPECIFICATIONS REQUIRED BY ANSI/BHMA A156.16
 - 7. BACK OF PRODUCT TO BE MARKED: L H M C © 2020.

REV.	DESCRIPTION	DATE	ENG.
A	INITIAL DRAWING	7-21-22	MG
B	UPDATED DIMENSIONS	09/09/22	DSC
C	UPDATED DIMENSIONS	8-8-23	MG
D	REVISED DESIGN	8-25-23	MG

State: Design
Modified On: 19-Sep-23 04:12:37 PM



SCALE 1.000



NOTICE: PROPRIETARY INFORMATION

THESE DRAWINGS AND SPECIFICATIONS ARE THE PROPERTY OF LIBERTY HARDWARE, MFG CORP. AND ARE NOT TO BE REPRODUCED, COPIED OR USED AS THE BASIS OF MANUFACTURE OR SALE OF APPARATUS AND DEVICES WITHOUT PERMISSION. THESE DRAWINGS AND SPECIFICATIONS CONTAIN COPYRIGHTED INFORMATION THAT IS PROPRIETARY TO LIBERTY HARDWARE AND SHALL NOT BE DIVULGED IN ANY WAY WITHOUT PERMISSION.

Third-angle projection		LIBERTY HARDWARE LIBERTY HARDWARE MANUFACTURING CORPORATION 140 Business Park Drive Winston-Salem, NC 27107		DWG. SIZE B (11 x 17 in.)
TOLERANCE MM TOL. UNLESS NOTED X. = ±1. X.X = ±0.5 X.XX = ±0.1 HOLES: ±0.1 ANGLES: ±1.0		Dr. By: MG Ck. By: ENG. Appd: SCALE: 1.500 DATE: 07/21/22	DESCRIPTION: COORD Classic Edge HRB ARM DWG #. 47253 SHEET. 2 OF 2 PART #. TBD WT. (grams) 128.2 REV. B	