

TECHNICAL DATA

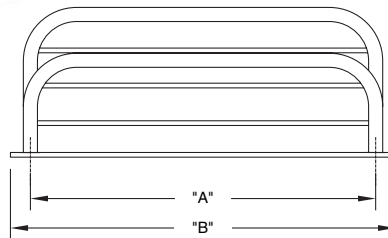
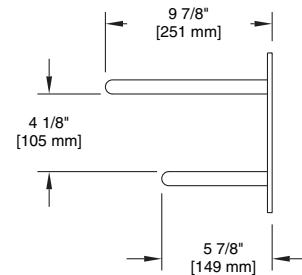
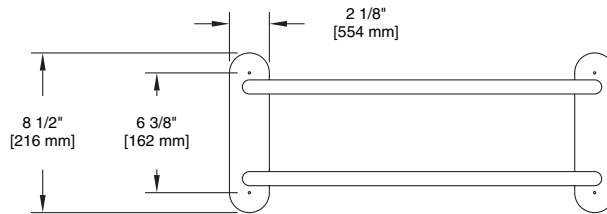
LIBERTY HARDWARE®
MANUFACTURING CORPORATION

A Masco Company

140 Business Park Drive • Winston-Salem, NC 27107
800.542.3789 • T 336.769.4077 • F 336.769.1839
www.libertyhardware.com

TOWEL SHELF WITH 1 BAR

2780 & 2781 Series



LENGTH	18" (457 mm)	24" (610 mm)
DIM "A"	18" (457 mm)	24" (610 mm)
DIM "B"	20 1/8" (511 mm)	26 1/8" (664 mm)

MATERIALS:

Wall Flange- 18 gauge stamped type 304 stainless steel.
Shelf Tubing - .028 (23 gauge) 3/4" O.D. type 304 stainless steel tubing.
Towel Bar Tubing - .028 (23 gauge) 3/4" O.D. type 304 stainless steel tubing
Crossbars - .025 (23 gauge) 3/8" O.D. type 304 stainless steel tubing.

Shelf and extension bar tubing is attached to wall flange with knurled brass bushings, brass washers and #1/4 - 20 x 1/2" zinc plated steel machine screws.

INSTALLATION:

Install top shelf and bottom towel bar on wall flanges with 4- 1 1/4" machine screws through lock washers and support plates. Mount assembled towel shelf with 1 bar with 4- #10 x 1 1/2" ovalhead nickel plated steel screws provided or 4- 3/16 x 3" zinc plated steel toggle bolts provided.

Wood blocking is preferable behind all wall surfaces. If wood blocking is not available, the following optional fasteners are suggested:

Tile/Masonry - Plastic or lead anchors
Plaster/Drywall - Toggle bolts

SPECIFICATION:

Surface mounted towel shelf with 1 bar shall be model _____ (fill in model number) by Liberty Hardware Manufacturing Corporation.