

TECHNICAL DATA

LIBERTY HARDWARE[®]
MANUFACTURING CORPORATION

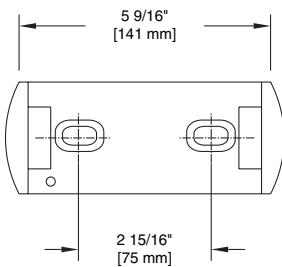
A Masco Company

140 Business Park Drive • Winston-Salem, NC 27107
800.542.3789 • T 336.769.4077 • F 336.769.1839
www.libertyhardware.com

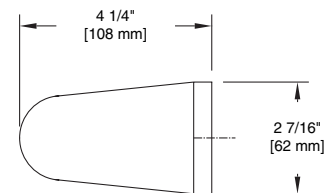
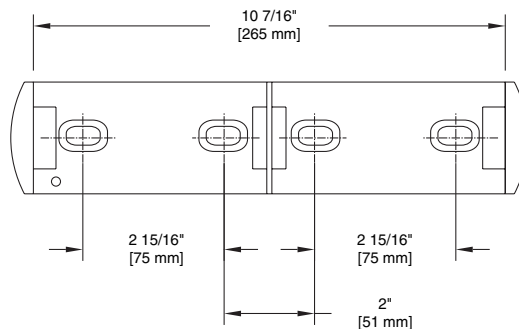
SINGLE & DOUBLE DELUXE TOILET PAPER HOLDER

1974 & 1976 Series

(1974)



(1976)



MATERIALS:

Paper holder back plate and projecting arms are heavy duty die cast zinc (Zamak), highly polished and chrome plated. Fixed arm is secured to back plate with 2 machine screws and lock washers. Hinged arm is secured to back plate with a steel pin. Push button is of plastic. Spring catch is of 22 gauge galvanized steel.

CAPACITY

1 (single unit) or 2 (double unit) standard core rolls up to 5" diameter. Push button releases spring catch allowing hinged projecting arm to swing back for loading paper. Push button is concealed by paper until used up for pilferage resistance.

INSTALLATION:

1974 - Mount paper holder to wall surface through 2 holes in back plate (2 15/16" C-C) with 2- #9 x 1 1/2" roundhead zinc plated steel screws provided.

1976 - Mount paper holder to wall surface through 4 holes in back plate (2 15/16" C-C each side set; 2" C-C between side sets; 7 7/8" C-C outside holes) with 4- #9 x 1 1/2" roundhead zinc plated steel screws provided. Wood blocking is preferable behind all wall surfaces. If wood blocking is not available, the following optional fasteners are suggested:

Tile/Masonry - Plastic or Lead Anchors
Plaster/Drywall/Fiberglass - Toggle bolts

SPECIFICATION:

Surface mounted deluxe paper holder shall be model _____
(fill in model number) by Liberty Hardware Manufacturing Corporation.