

# ELLIPSE

## GRANITE 30" DOUBLE BOWL SINK Model ELG160

Maximum durability meets efficient design in the Ellipse Granite series. Available in several configurations, there's an Ellipse sink that's perfect for your space.

### FEATURES

- Treated with Sanitized®, which helps to reduce bacteria and microbe growth, giving the sink lasting protection.
- Available in a variety of warm, sophisticated shades inspired by natural elements.
- Made from 80% quartz and 20% hard acrylic resin, granite sinks are durable, resistant to scratches, stains and heat.
- Thanks to the UV protection, the beautiful color of the granite will not fade and ensure long-lasting use.

### TECHNICAL FEATURES

Overall Sink Size (OD)	33" x 21 3/4"
Bowl Size (ID)	29 3/4" x 18 7/8"
Bowl Depth (ID)	9" / 8"
Corner Radius	25mm
Minimum Cabinet Size	36"
Installation Type	Undermount
Weight	42 lbs
Warranty	Limited Lifetime

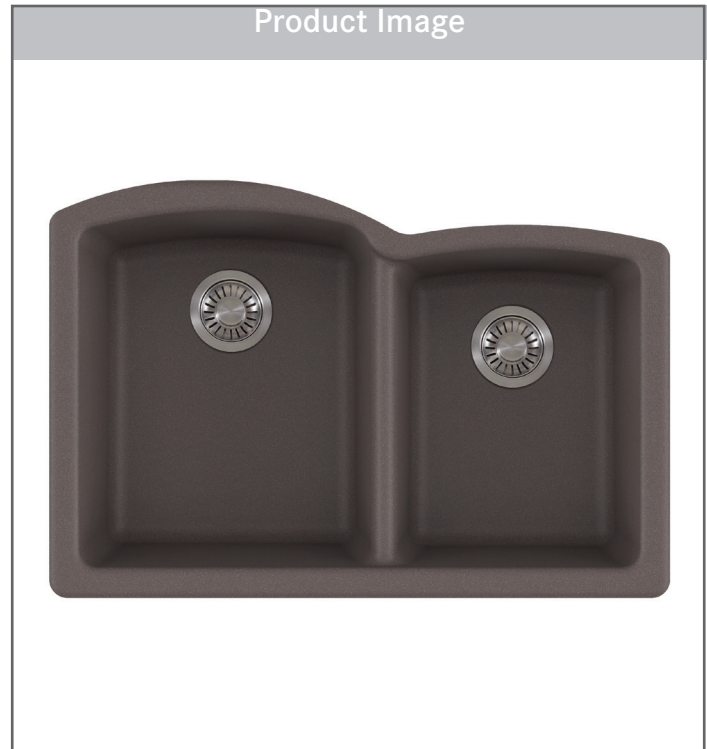
### AVAILABLE FINISHES

ELG160ONY		Onyx
ELG160MOC		Mocha
ELG160MBK		Matte Black
ELG160OYS		Oyster
ELG160CHA		Champagne
ELG160SHG		Stone Grey
ELG160PWT		Polar White

### OPTIONAL ACCESSORIES

Bottom Grid	ELG16-36S
All-In Accessory System	AIUS100 / AIUS200 / AIUS300
Colorline Strainer	900-XXX
Strainer Assembly	1145 / 1145SN

Product Image



Dimensional Drawing

