

DUO FLUSH™

DUAL FLUSH VALVE, HANDLE & ADAPTER INSTALLATION GUIDE

Visit www.duoflush.com for easy-to-follow installation videos and additional troubleshooting tips.

WARNING
DO NOT USE IN-TANK DROPP-IN TOILET BOWL CLEANERS CONTAINING BLEACH OR CHLORINE. BLEACH OR CHLORINE MAY CAUSE FLOODING AND PROPERTY DAMAGE AND VOID FLUIDMASTER WARRANTY. Fluidmaster Flush™ Toilets are not designed to be used with in-tank bowl cleaners and WILL NOT VOID THE FLUIDMASTER WARRANTY. Always use quality Fluidmaster or other quality toilet bowl cleaners. Fluidmaster will not be responsible or liable for use of other Fluidmaster parts during installation or repair.

Fluidmaster
30800 Rancho Viejo Rd.
San Juan Capistrano, CA 92675
www.fluidmaster.com
800.631.2011
M-F 9:00 am - 5:00 pm PST

PART# 25-0183_Grev5_041315

PARTS OVERVIEW

Items Needed: Sponge or Towel

There are 3 main components included in this box.

DUO FLUSH™ Valve
The DUO FLUSH™ Valve saves water by allowing you to choose between half and full flushes.

Angled Seat Adapter
The ANGLED SEAT ADAPTER is only necessary if you have a plastic ANGLED FLUSH VALVE SEAT.

Dual Action Handle (Handle)
The DUAL ACTION HANDLE will allow you to flush UP for a half flush and DOWN for a full flush.

DUO FLUSH™ VALVE OVERVIEW

Labels: Dual Action Handle, Adjustment Dials, Flush Valve Seat, Snap-On Mount, Flush Cable, Flush Handle Actuator.

INCOMPATIBILITIES / SPECIAL NOTES

The systems and components shown here are not compatible with the Fluidmaster DUO FLUSH™ Valve.

3" Flush Valves
Certain 1-piece toilets with Low-Boy tanks (less than 8" in height)
Kohler Side-Mount Valves

Ballcock Fill Valves
Can be replaced with Fluidmaster's PerformMAX™ FILL VALVE 400ARRH.

Mansfield Flush Valves
Requires installation of 2" flapper flush valve (not included).
Can be replaced with Fluidmaster's 507 2" Flush Valve.

This device is not intended to be used as a retrofit device for 1.28 or 1.0 gpf toilet. Performance may vary since product was not tested on every single version or model of water closets.

SECTION 1: PREPARING TO INSTALL THE DUO FLUSH™ VALVE

Step 1: Shut off the water supply to your toilet. Flush your toilet to drain the water from the tank. If necessary, sponge out any remaining water.

Step 2: Remove the existing flapper, chain and flush handle assembly from your tank. When removing the FLUSH HANDLE, note that the LOCKNUT is typically reverse-threaded, so you need to turn it clockwise to loosen it.

IDENTIFYING YOUR FLUSH VALVE SEAT

Step 3A: Identify the type of FLUSH VALVE SEAT you have in your tank. If your plastic FLUSH VALVE has a FLAT SEAT as pictured above, proceed directly to Section 3 on the back side of this instruction guide.

Step 3B: If your plastic FLUSH VALVE has an ANGLED SEAT, locate the ANGLED SEAT ADAPTER. Follow the installation instructions below for Section 2.

Step 3C: If your FLUSH VALVE is brass, please contact Fluidmaster technical support at (800) 631-2011 M-F 5:30 am - 5pm PST. or replace brass flush valve with a 507A Fluidmaster FLUSH VALVE.

SECTION 2: INSTALLING THE ANGLED SEAT ADAPTER (IF NEEDED)

To properly install and seal the ANGLED SEAT ADAPTER onto your existing angled flush valve seat, it is critical that you follow the 3 easy steps below - **if the soft sealant ring material is not properly applied, leak(s) will occur.**

Angled Flush Valve Seat

Angled Seat Adapter
The ANGLED SEAT ADAPTER is only necessary if you have a plastic ANGLED FLUSH VALVE SEAT.

Step 4: Prior to installing the ANGLED SEAT ADAPTER, use warm soapy water and scrub pad to clean the existing FLUSH VALVE SEAT. Then dry the seat and the area around it on the bottom of the tank.

Step 5: Remove the paper from SEALANT RING located on the bottom of the ANGLED SEAT ADAPTER. **DO NOT REMOVE SEALANT RING from the adapter.**

Step 6: Locate yellow arrow on back of the ANGLED SEAT ADAPTER. Align yellow arrow on ANGLED SEAT ADAPTER directly toward the plastic OVERFLOW PIPE and push the ANGLED SEAT ADAPTER onto the FLUSH VALVE SEAT. As the adapter is firmly pressed onto the FLUSH VALVE SEAT, the SEALANT RING located on the bottom of the ANGLED SEAT ADAPTER will spread to provide correct coverage and seal.

TROUBLESHOOTING: FOR ANGLED SEAT ADAPTER INSTALLATION

IMPORTANT: Installation recommendations below: If the SEALANT RING is not properly applied, leak(s) will occur.

A: The SEALANT RING needs to cover the ribbed areas around the entire ANGLED SEAT ADAPTER. **(RIBBED SURFACE SHOWN WITH ARROWS).**

B: CORRECT
Assure that the SEALANT RING "hugs" the wall of the adapter to prevent gaps as shown in **Photo B**. Sealant ring should be placed around the wall in its original shape and thickness. Avoid gaps, but do not press hard against the wall - ensure ribbed surface area is covered.

C: INCORRECT
Sealant ring pressed too hard and high against the adapter wall causing it to deform from its original shape - this will not provide adequate coverage on the surface of the adapter as shown with arrows.

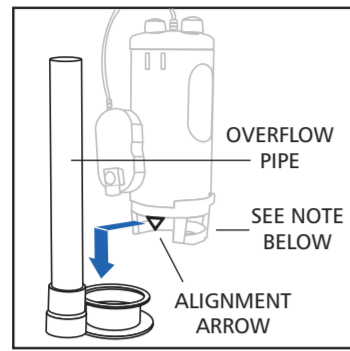
D: INCORRECT
Sealant ring is not close enough to wall of adapter - to correct this, reposition the sealant ring as shown above.

E: CORRECT

F: CORRECT
Overlap is approximately 1/8 inch

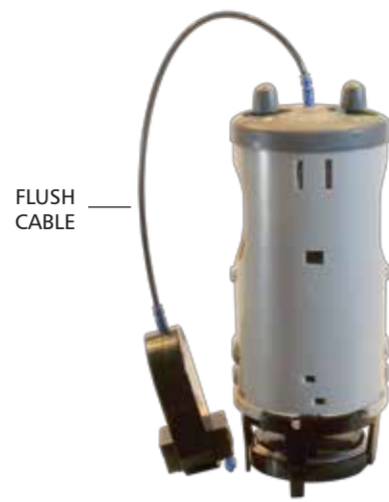
E & F: Ensure sealant ring provides coverage at front of opening as shown in **Photo E & F**.

SECTION 3: INSTALLING THE DUO FLUSH™ VALVE

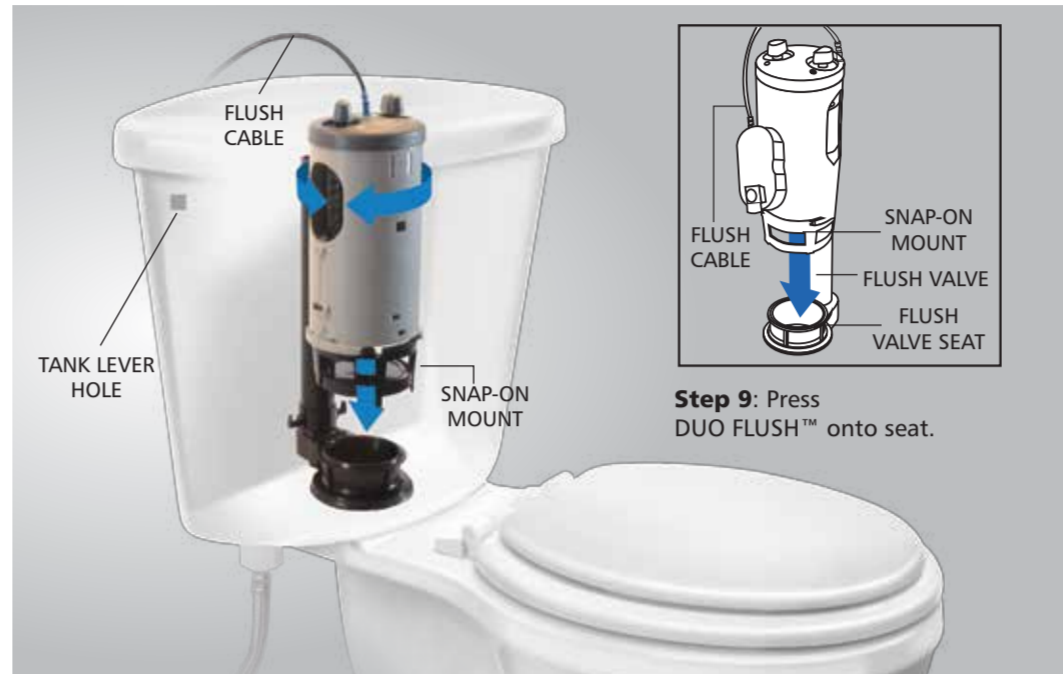


Step 7: Remove foam around ADJUSTMENT DIALS.

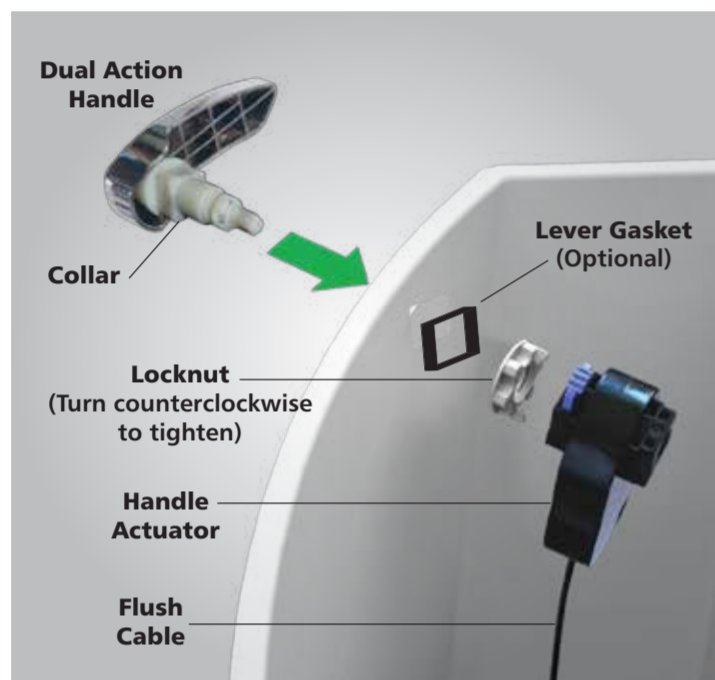
Step 8: Locate white arrow on SNAP-ON MOUNT and align it facing the OVERFLOW PIPE. Do not install yet.



Note: Make sure not to sharply bend or kink the FLUSH CABLE.

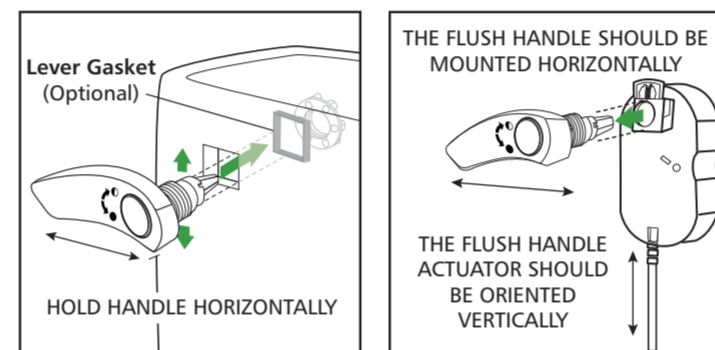


SECTION 4: INSTALLING THE DUAL ACTION HANDLE



Step 10: Remove the HANDLE from the bag.

Step 11: Unthread LOCKNUT in a clockwise rotation on HANDLE.



Step 12: Insert the HANDLE into toilet hole. LEVER GASKET (optional) will be added if too loose.

Step 13: Install nut on handle threads by turning counter clockwise to tighten. Use LEVER GASKET if handle feels loose when screwed into place.

Step 14: Ensure that the HANDLE is positioned horizontally before snapping into HANDLE ACTUATOR.

Step 15: Attach HANDLE ACTUATOR to the COLLAR on HANDLE by pushing the BLUE BUTTON on top of ACTUATOR down, then inserting COLLAR into ACTUATOR and releasing the button.

SECTION 5: WATER LEVEL ADJUSTMENT: HALF FLUSH



Step 16: Ensure that the half flush and full flush are both set to MAX settings before you start adjusting your settings. To adjust the settings, push the knob down and turn.

Step 17: THE ADJUSTMENT DIAL with GREEN DISC (look for the symbol) controls your half flush. Press down and turn to "MAX" to start.

A. Drop 3 pieces of toilet paper into the bowl and ROTATE the HANDLE upward (half flush). If the flush is successful, adjust the setting to the next lower numbered setting. Repeat step A.

B. Continue to adjust the setting to the next lowest number until the flush is not successful.

C. Adjust your setting back to the last successful flush setting that provided you with a successful flush.

SECTION 6: WATER LEVEL ADJUSTMENT: FULL FLUSH



Step 18: The ADJUSTMENT DIAL with BLUE DISC (look for the symbol) controls your full flush.

A. Start the full flush dial 1 setting higher than the half flush setting.

B. Drop 3 pieces of toilet paper into the bowl and rotate the HANDLE downward (full flush). If the flush is successful keep setting as is.

C. If the contents in your toilet bowl do not successfully flush down after use, adjust setting up to the next highest number. Repeat step 18B.

DUO FLUSH™ TROUBLESHOOTING

1. Tank Lid Interference on Half (Upward) Flush

Problem: Tank lever hits tank lid forcing the user to hold the handle

Solution: Remove handle actuator by holding the top end of actuator and PRESS BLUE BUTTON to release. DO NOT pull on FLUSH CABLE when removing the handle actuator.

Rotate handle downward and reinsert actuator onto handle.

If tank lever does not fit properly on your toilet tank, for further help visit www.fluidmaster.com or call Fluidmaster Technical Support at (800) 631-2011 M-F 5:30 am – 5:00 pm PST.

2. Seal Leaking

Problem: The seal continues to leak water causing water loss in the tank.

Solution: Remove the handle actuator by holding the top end of the actuator and PRESS BLUE BUTTON to release. Grab the top of the Duo Flush and gently rock (away from fill valve) and pull up on Duo Flush. Once released clean seat and inspect piston seal at bottom ensuring the seal is centered on piston. Reattach Duo Flush and handle actuator. Turn on water and recheck water level for leaking. If using angled seat adapter see troubleshooting section regarding Angled Seat Adapter.

3. Unused Parts

Problem: Why do I have parts left over from my kit?

Solution: Depending on the type of flush valve you have identified, you may have additional parts left which may include an angled seat adapter.

4. Half flush will not adequately remove waste

Check water level.

Move the HALF FLUSH ADJUSTMENT DIAL (Green) to a higher number to allow more water to be flushed. Water level must be higher than bottom of oval opening on the side of the Duo Flush™.

DUO FLUSH™ TROUBLESHOOTING (continued)

5. Full flush will not adequately remove waste

Check water level.

Move the FULL FLUSH ADJUSTMENT DIAL (Blue) to a higher number to allow more water to be flushed. Water level must be higher than bottom of oval opening on the side of the Duo Flush™.

6. Angled Seat Adapter Removal

If you need to remove the ANGLED SEAT ADAPTER from your system, pull the adapter upward firmly to release it from the FLUSH VALVE SEAT.

7. Full flush & half flush closes immediately

Water level must be higher than bottom of oval opening on the side of the Duo Flush™.

8. Other

Please contact Fluidmaster at (800) 631-2011 M-F 5:30 am - 5:00 pm PST, or by email: techsupport@fluidmaster.com

More Information

Please visit our website at www.fluidmaster.com for more solutions to common toilet problems.

Do not return product to the store.

Please call technical support first if you need assistance.

For further help visit www.fluidmaster.com or call Fluidmaster Technical Support at (800) 631-2011 M-F 5:30 am – 5:00 pm PST.

5 YEAR LIMITED WARRANTY

Subject to the "Exclusions" set forth below, Fluidmaster Inc. promises to the consumer to repair, or at the option of Fluidmaster Inc. to replace any part of this plumbing product which proves to be defective in workmanship or materials under normal use for five years from the date of purchase. All costs of removal, transportation and reinstallation to obtain warranty service shall be paid by the consumer. During this "Limited Five Year Express Warranty," Fluidmaster Inc. will provide, subject to the "Exclusions" section set forth below, all replacement parts free of charge, necessary to correct such defects. This "Limited Five Year Warranty" is null and void if this plumbing product has not been installed and maintained in accordance with all written instructions accompanying the product, and if non-Fluidmaster Inc. parts are used in installation.

EXCLUSIONS: FLUIDMASTER INC. SHALL NOT BE LIABLE FOR INCIDENTAL OR CONSEQUENTIAL DAMAGES, INCLUDING COSTS OF INSTALLATION, WATER DAMAGE, PERSONAL INJURY OR FOR ANY DAMAGES RESULTING FROM ABUSE OR MISUSE OF THE PRODUCT, FROM OVERTIGHTENING OR FROM FAILURE TO INSTALL OR MAINTAIN THIS PLUMBING PRODUCT IN ACCORDANCE WITH THE WRITTEN INSTRUCTIONS, INCLUDING USE OF NON-FLUIDMASTER PARTS. DO NOT USE IN-TANK DROP-IN TOILET BOWL CLEANERS CONTAINING BLEACH OR CHLORINE. USE OF SUCH PRODUCTS WILL RESULT IN DAMAGE TO TANK COMPONENTS AND MAY CAUSE FLOODING AND PROPERTY DAMAGE. USE OF SUCH PRODUCTS WILL VOID THIS WARRANTY.