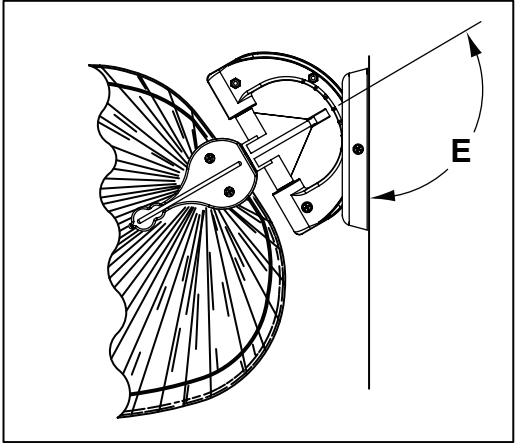


# FP720-Fan Unit / FP780-220 Motor Wall Mount Assembly

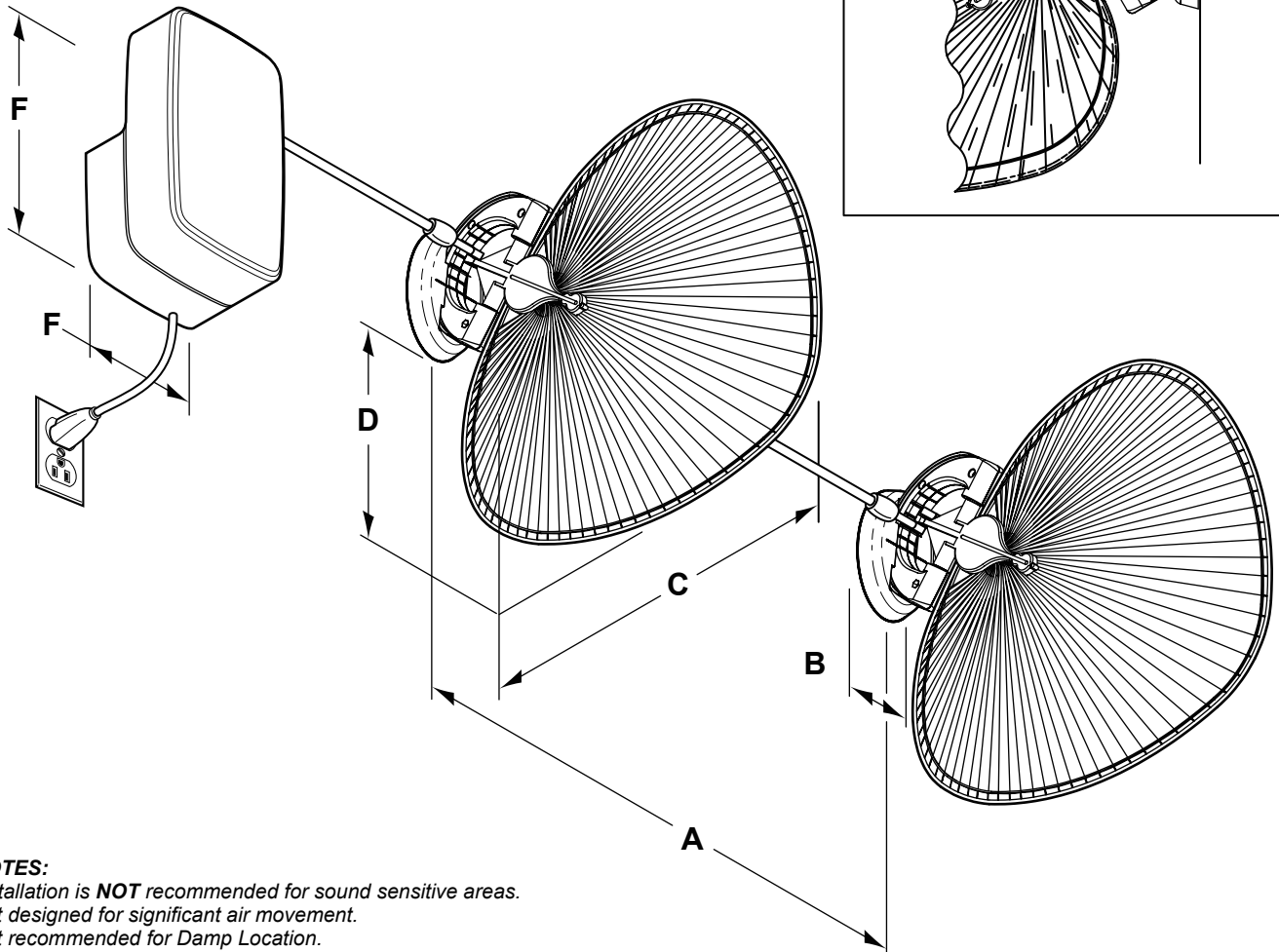


Wall Assembly Specifications		
A	Support Spacing	12" to 4' *
B	Fan Base Width	4½"
C	Blade Projection	21" with 18" Blades@30° 24" with 22" Blades@30°
D	Blade Projection	9½" with 18" Blades 11¾" with 22" Blades
E	Blade Angle (10° increments)	Wide Oval Blade, 30° max Narrow Blade, 45° max
F	Motor Assembly Unit	13¾" L x 7¼" W

Weights (Approximate)	
Fan Assembly Unit	5 lbs
Motor Assembly Unit	17½ lbs



\* Cutting of push rods is required for spacing of 12" to 27½".



**NOTES:**  
 Installation is **NOT** recommended for sound sensitive areas.  
 Not designed for significant air movement.  
 Not recommended for Damp Location.

# FP720-Fan Unit / FP780-220 Motor Ceiling Mount Assembly

## Ceiling Assembly Specifications

A	Overall Length	4' to 24'
B	Support Spacing	12" to 4' *
C	Fan Base Unit	4½" L x 4½" W
D	Overall Drop	23" with 18" Blades 27" with 22" Blades
E	Blade Sweep	21" with 18" Blades 25½" with 22" Blades
F	Motor Assembly Unit	13¾" L x 7¼" W

## Weights (Approximate)

Fan Assembly Unit	5 lbs
Motor Assembly Unit	17½ lbs

**NOTES:**

Installation is **NOT** recommended for sound sensitive areas.  
Not designed for significant air movement.  
Not recommended for Damp Location.

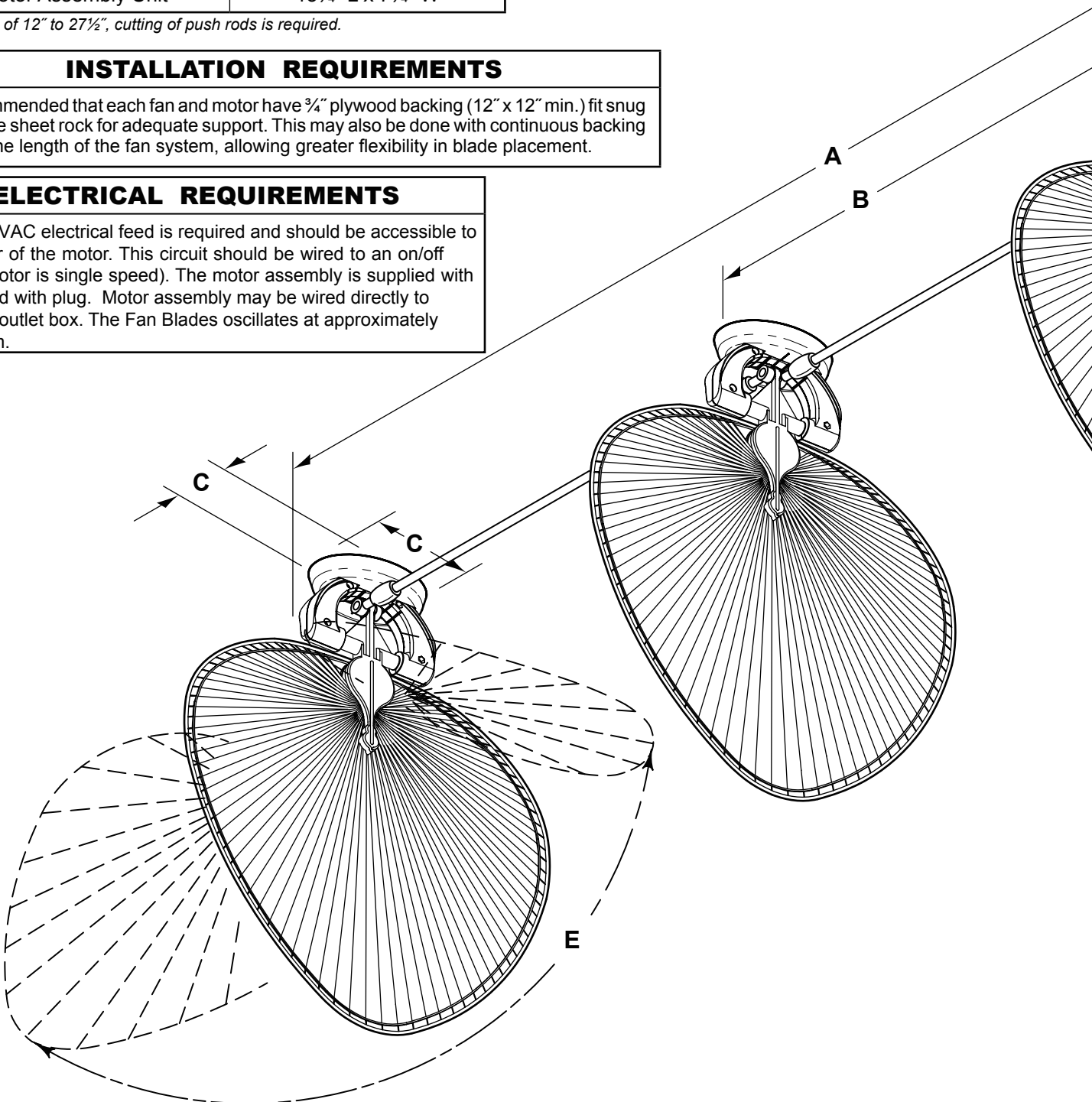
\*For spacing of 12" to 27½", cutting of push rods is required.

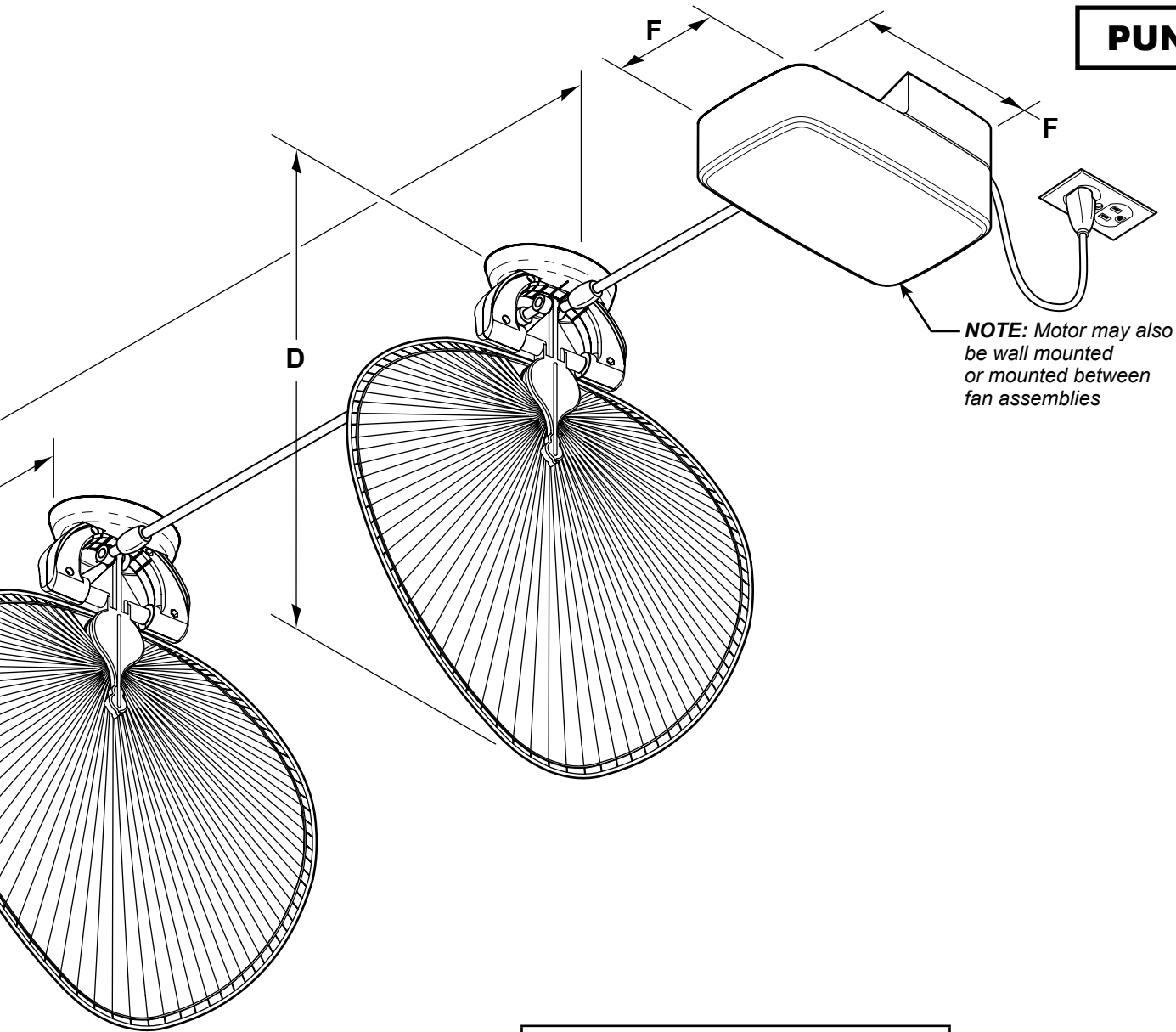
## INSTALLATION REQUIREMENTS

It is recommended that each fan and motor have ¾" plywood backing (12" x 12" min.) fit snug behind the sheet rock for adequate support. This may also be done with continuous backing running the length of the fan system, allowing greater flexibility in blade placement.

## ELECTRICAL REQUIREMENTS

220~240 VAC electrical feed is required and should be accessible to the center of the motor. This circuit should be wired to an on/off switch (Motor is single speed). The motor assembly is supplied with a 2 ft. cord with plug. Motor assembly may be wired directly to electrical outlet box. The Fan Blades oscillates at approximately 18-20 rpm.





**220V Model**

Motor Assembly - 220~240 volt, 50 Hz  
 Ceiling / Wall Mount  
 Oscillating RPM: 19 (single-speed)  
 Available in 2 standard finishes

**\*\*Available Finishes**

AB	Antique brass
PW	Pewter

**Ordering Information (Items Priced and Sold Separately)**

Item	Catalog No.	Description
Fan Assembly Unit	FP720**	Use in ceiling or wall application One push rod included (with each fan unit)
One Motor Unit	FP780**-220	220~240V, 50 Hz, ½ horsepower, 0.90 amp, 19 rpm, single-speed FK2100-220; ON/OFF Switch only (customer supplied). 2 ft power cord (or can be hard-wired directly). Maximum 6 fan assembly units per motor.
Blade Sets (Order Separately)		See catalog for blade options <b>NOTE:</b> 18" blades are recommended for most installations

\*\*Insert Finish Codes