



# MIDWAY

RECESSED COLLECTION



## 3.5" 45381 DOUBLE REGRESSED GIMBAL

The Midway collection is a family of integrated led recessed lights available in sizes ranging from 2"-6". With their durable die cast aluminum bodies and built on CCT color selecting switch Midway family fixtures are aesthetically appealing, functional and extremely versatile. Their IC rated shallow bodies allow them to be used in most residential and commercial installations with or without insulation in the ceiling. Midway fixtures are available in white or black finish and come standard with a reliable phase dimming power supply.



PROJECT: \_\_\_\_\_

TYPE: \_\_\_\_\_

DATE: \_\_\_\_\_

NOTES: \_\_\_\_\_



2700K . 3000K . 3500K . 4000K . 5000K

### SPECIFICATIONS

#### LIGHT HOUSING

- IC Airtight Cast aluminum body.
- Remodel application. C/W spring loaded clips.
- Mates to driver box with quick connector.
- Max Ceiling thickness 5/8".
- Approved for damp location.

#### DIMENSIONS

- Cut hole:  $\phi 7 \frac{1}{4}'' \times 3 \frac{3}{4}''$ .
- Fixture:  $\phi 7 \frac{7}{8}'' \times 3 \frac{1}{4}''$ H.

#### ELECTRICAL

- 120 V Input class 2 constant current dimmable driver enclosed in junction box.
- TRIAC and ELV dimming.
- Min operating temperature (-4°F~-104°F) (-20°C~-40°C).

#### LIGHT MODULE

- 1 x 24W Integrated LED COB.
- Lumen maintenance 70% 50,000 hrs.
- CRI: 90+
- Beam angle: 38 degree.
- Kelvin (CCT): 27K | 30K | 35K | 40K | 50K
- Delivered Lumen: 1273 lm | 1360 lm | 1495 lm | 1555 lm | 1526lm

#### CERTIFICATIONS



### ORDERING GUIDE

MODEL	FINISH
45381-027	Black
45381-010	White

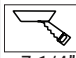
### ACCESSORIES



$\phi 7 \frac{3}{8}'' \times 3 \frac{3}{4}''$   
 $\phi 10 \frac{13}{16}'' \times 3 \frac{3}{4}''$

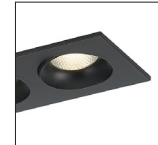


NO IC BOX  
REQUIRED

	WATTS	LUMENS	KELVIN	DIMMABLE	CRI	BEAM ANGLE	ADJUSTABLE
 $\phi 7 \frac{1}{4}'' \times 3 \frac{3}{4}''$	24W	Up to 1555	CCT Selectable	TRIAC/ELV	90+	38°	30°



#### FINISHES



#### PRODUCT DIMENSIONS

