



PRODUCT DESCRIPTION

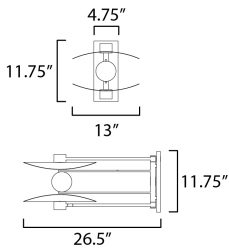
An artistic and flexible design concept, crystal orbs are illuminated behind curved Naturally Aged Brass shades. The oversized panes are mounted to LED light housings that can rotate to provide either ambient indirect lighting that is directed upwards at the crystal for a glowing effect, or these LEDs can be rotated to shine downward for ample lighting. The two-arm wall sconce has a longer extension in the arm with individual light switches on the backplate to be used for directed task lighting great for bedside applications or creating a space within a room that will serve as task lighting.

MEASUREMENTS

DIMENSION : 11.75" W x 11.75" H x 32" Ext
 MAX OAH : 4.75" W x 11.75" H
 HANGING WEIGHT : 5.5 lb

LAMPING

INPUT VOLTAGE : 120V
 LUMENS : 1,000 Rated (650 Del.)
 BULB : 2 x 5W LED AC Integrated , 10W Total
 BULB INCLUDED : (Integrated)
 DIMMABLE : Triac or ELV
 CRI : 90 CRI
 COLOR_TEMP : 3000K
 LIGHTING_DIRECTION : Directional



FINISHES OPTION

 Black / Natural Aged Brass

MATERIAL

Steel, Aluminum, Crystal

RATINGS

cETLus
 Damp Location



ADDITIONAL

INSTALL UP/DOWN: Up/Down
 RATED LIFE 35000 Hours
 OPERATING TEMPERATURE:
 -20°C (-4°F), 40°C (104°F)

Always consult a qualified electrician before installing any lighting product.



WESTERN DISTRIBUTION CENTER (HEADQUARTER)
 253 NORTH VINELAND AVE | CITY OF INDUSTRY, CA 91746
 EASTERN DISTRIBUTION CENTER
 101 GARDNER PARK | PEACHTREE CITY, GA 30269
 P. 626.956.4200 | F. 626.956.4225 | maximlighting.com