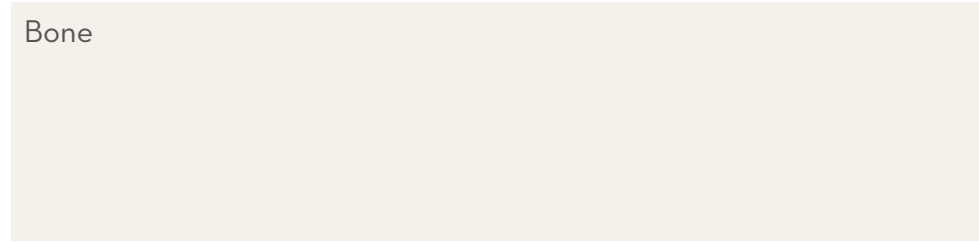
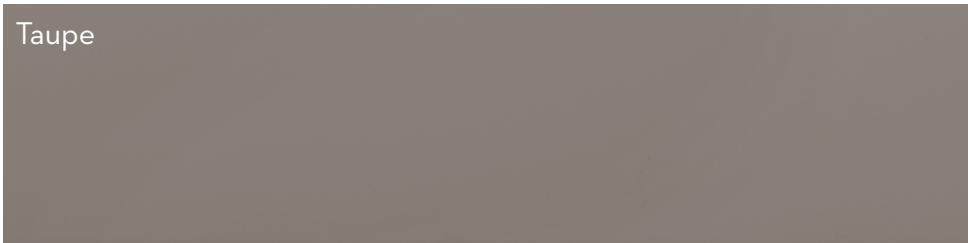
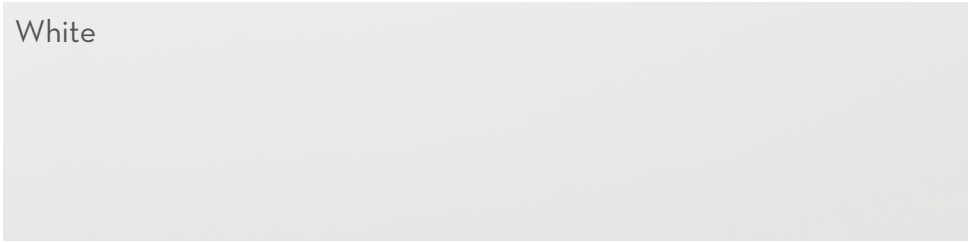


LOGIC™

Glazed Ceramic

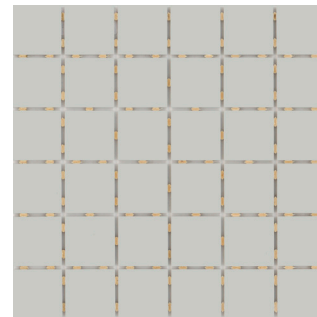
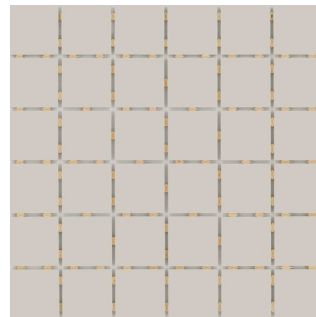
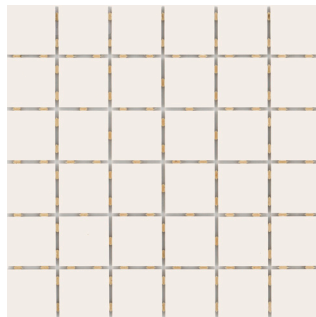
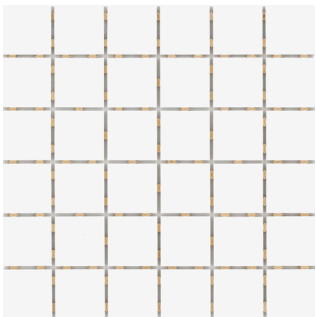
Logic™ captures the essence of subway tile for unique vertical installations. A variety of tile sizes guide timeless neutrals across walls and surfaces. The series is available in matte and glossy finishes for an array of aesthetics.

5 Colors | 4 Sizes | 1/4" Thickness



All Colors Available in Sizes 6"x6", 4"x16", 4"x10", 3"x6" | Matte & Gloss Finish

Mosaics



White 2"x2" on 12"x12" Dot Mount Mesh

Bone 2"x2" on 12"x12" Dot Mount Mesh

Fawn 2"x2" on 12"x12" Dot Mount Mesh

Gray 2"x2" on 12"x12" Dot Mount Mesh

Sizes & Trim					Technical Specifications																
Tile thickness could vary based on size. Larger format tiles will have a higher thickness.																					
													Test Method	Abrasion Resistance C1027	Breaking Strength C648	Chemical Resistance C650	Water Absorption C373	DCOF ANSI A137.1	Freeze-Thaw Cycling C1026	Scratch Hardness MOHS	Shade Variation Rating
6"x6" 5.98"x5.98"	4"x16" 3.94"x15.83"	4"x10" 3.94"x9.84"	3"x6" 2.99"x5.98"	2"x6", 3"x6", 4"x16" Wall SBN	4"x16" Wall SBN	2"x2" Wall SBN Corner	1/2"x8" Jolly	1"x1" Beak (White Gloss)	6"x6" Cove Base & 1"x6" Corner (White Gloss)	2"x6" Mud Cap & 2"x2" Mud Cap Corner (White Matte & Gloss)											
										Results	0	≤ 250 lbf	Non Resistant	> 7%	Wall Only	Non Resistant	6	V2			

Grout joint recommendation: 1/16" unless an offset is used. 1/8" when used in a staggered pattern, overlap not to exceed 33%

Green Friendly: VOC None | Recycled Content 0% Pre & Post-Consumer