

**Lavatory Sink With Overflow
Wall Mounted With Sensor Faucet
Battery Powered, Models ELVWO2219SBC,
ELVWO2219SBMC and ELVWO2219SBTMC**



SPECIFICATIONS

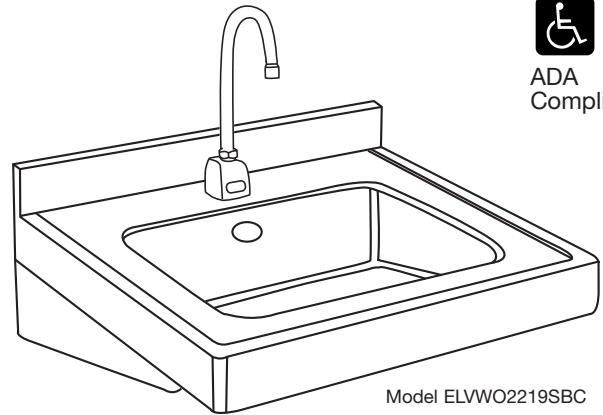
GENERAL

ELVWO2219 #18 gauge, type 304 (18-8) stainless steel lavatory with 5/32" (4mm) raised rim and 2-1/2" (64mm) high back-splash. Compartment has 1-3/4" (44mm) radius vertical and horizontal coved corners. 2-1/2" (64mm) apron at front and both sides. Exposed surfaces are hand blended to a uniform satin luster finish. Rear centered outlet. Drain opening 1-5/8" (41mm). Underside is sound deadened. Furnished with integral stainless steel support brackets and separate wall hanger. With connected overflow. Meets ADA requirements.

(CHECK MODEL SPECIFIED)

MODEL	FAUCET	MIXING VALVE
<input type="checkbox"/> ELVWO2219SBC	LK721B	NONE
<input type="checkbox"/> ELVWO2219SBMC	LK721B	LK724
<input type="checkbox"/> ELVWO2219SBTMC	LK721B	LK723

LK721B Sensor-operated, non-mixing (tempered water), deck-mounted gooseneck faucet with adjustable sensor eyes. A continuous beam is emitted from sensor. The sensor faucet is activated by user placing hands under the spout. Tempered water will flow as long as hands remain within sensor range. When hands are removed, the water stops automatically based on shut off delay settings. The sensor then resets and is ready for the next user. Battery powered and has a battery holder with (4) AA batteries. Chrome plated - solid brass body construction and 12-1/2" (318mm) high from deck to top of spout, 8-1/4" (210mm) from deck to spout outlet, 5-3/8" (137mm) reach C.P. spout with 2.0 gpm laminar flow control on spout end. Includes vandal-resistant, water-resistant sensor control module with armored vandal-resistant control and power cables, slow-closing piston operated solenoid valve, in-line filter with clean




ADA
Compliant

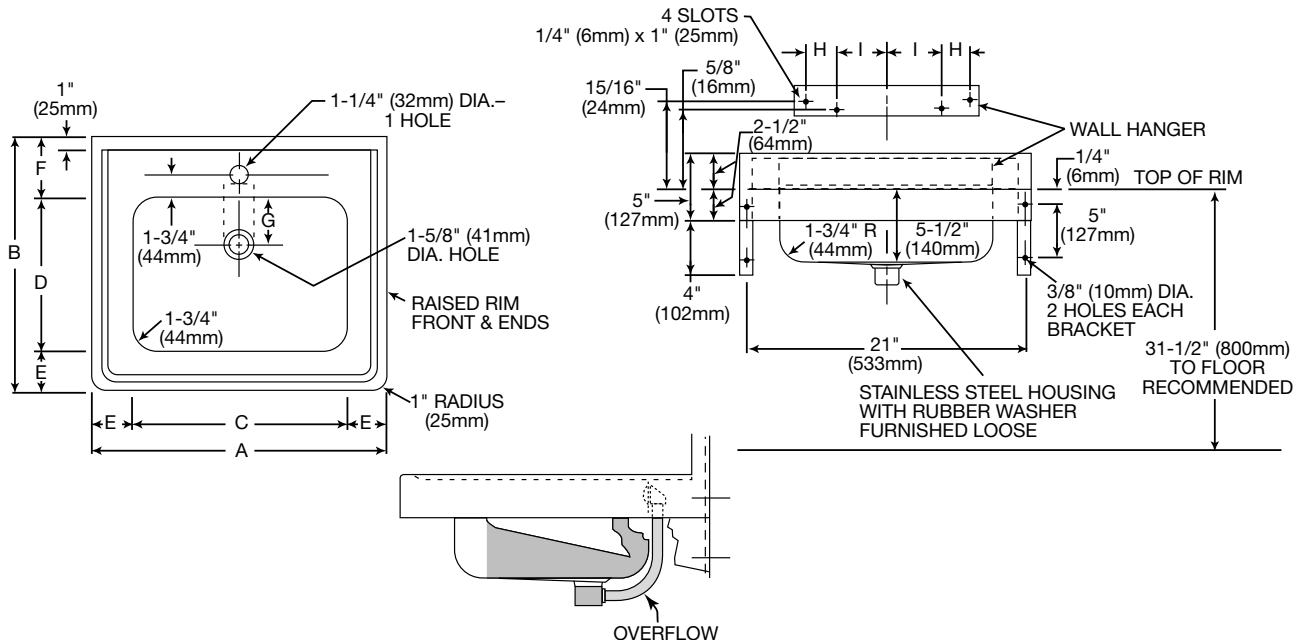
out trap, and 3/8" (10mm) stainless steel braided 12" (305mm) supply line. Control circuit is solid state, has adjustable sensor range (6" [152mm] preset to 30" [762mm]), shut off delay preset at 1 second and field adjustable to 2, 4, or 8 seconds, and automatic time-out feature (to prevent sink overflow) is preset at 0 seconds and is field adjustable to 15, 30, or 60 seconds.

LK723 Anti-scald thermostatic mixing valve with nickel-plated brass body 1/2" (13mm) SWT inlets and outlet connections, check valves on inlets and a mixed temperature range of 80°-120°F. Certified under ASSE1016.

LK724 Mechanical mixing valve with C.P. brass body, 3/8" (10mm) compression inlets and outlet connections, and check valves on inlets.

DIMENSIONS

Model Number	A		B		C		D		E		F		G		H		I	
	in.	mm	in.	mm	in.	mm	in.	mm	in.	mm	in.	mm	in.	mm	in.	mm	in.	mm
ELVWO2219	22	559	19	483	16	406	11 1/2	292	3	76	4 1/2	114	3 1/2	89	2 5/8	67	4 15/16	125

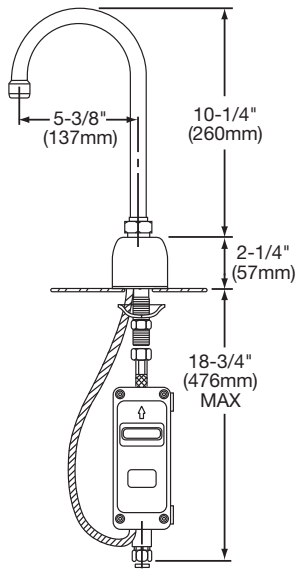
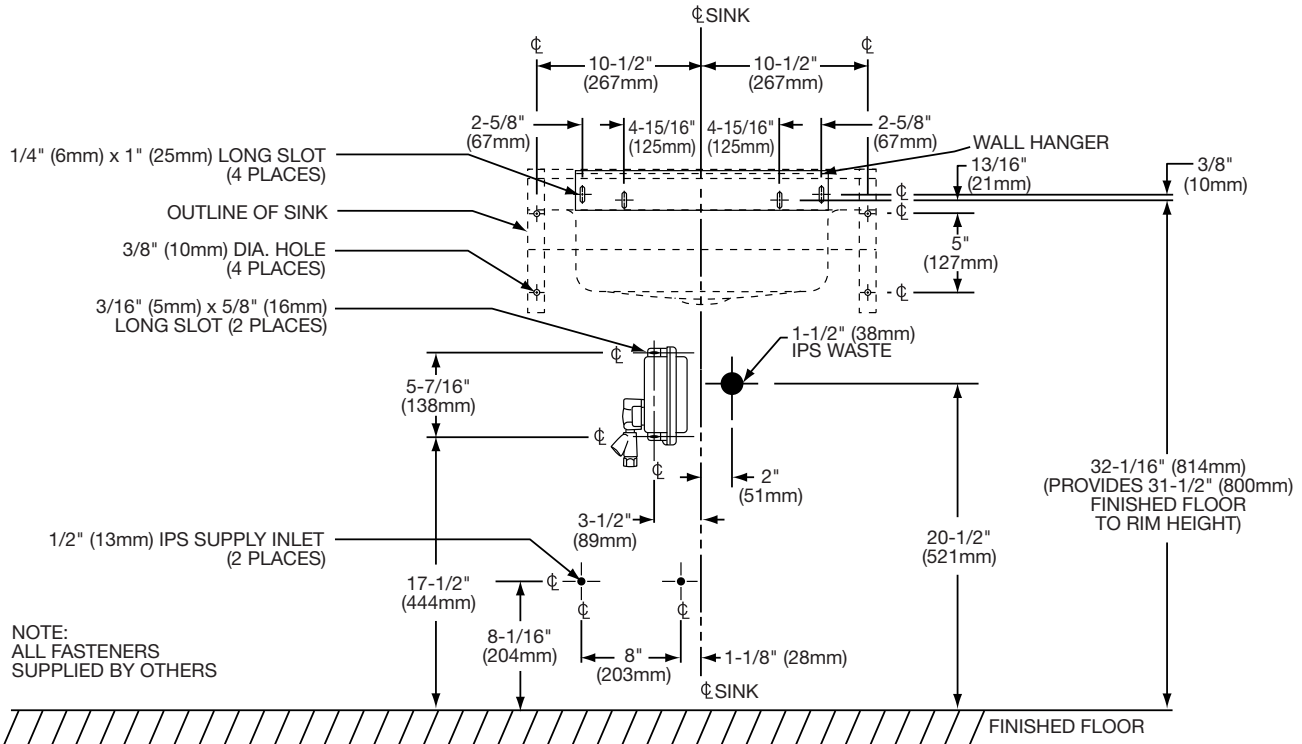


In keeping with our policy of continuing product improvement, Elkay reserves the right to change product specifications without notice.

**Lavatory Sink With Overflow
Wall Mounted With Sensor Faucet
Battery Powered, Models ELVW02219SBC,
ELVW02219SBMC and ELVW02219SBTMC**

ELKAY®

ROUGH-IN DIMENSIONS



NOTE:
 USE TEFLON TAPE FOR
 ALL WATER CONNECTIONS.
 DO NOT USE PIPE DOPE.

