

SPECIFICATIONS

RATED FOR INDOOR AND OUTDOOR USE

PRODUCT SPECIFICATION

Two-level wall mounted drinking fountain constructed of #14 gauge, type 304, stainless steel polished to a lustrous satin finish.

Contoured basins minimize splashing and have vandal-resistant bubblers. Keyed into location to prevent rotation. Easy to operate, fully functional push buttons are vandal-resistant. Vandal-resistant bottom cover plates included. Flow regulator provides constant stream from 20 to 105 psi water pressure.

THIS DRINKING FOUNTAIN COMPLIES WITH THE REQUIREMENTS OF A.D.A. (AMERICANS WITH DISABILITIES ACT) WHEN PROPERLY INSTALLED.

NO LEAD DESIGN

THIS DRINKING FOUNTAIN COMPLIES WITH THE LEAD FREE REQUIREMENTS OF THE U.S. SAFE DRINKING WATER ACT AND ALL STATE LAWS.

Elkay Drinking Fountains are manufactured with a waterway system utilizing copper components and lead-free material.

This drinking fountain is certified by WQA to lead-free compliance including NSF/ANSI 61 and 372.



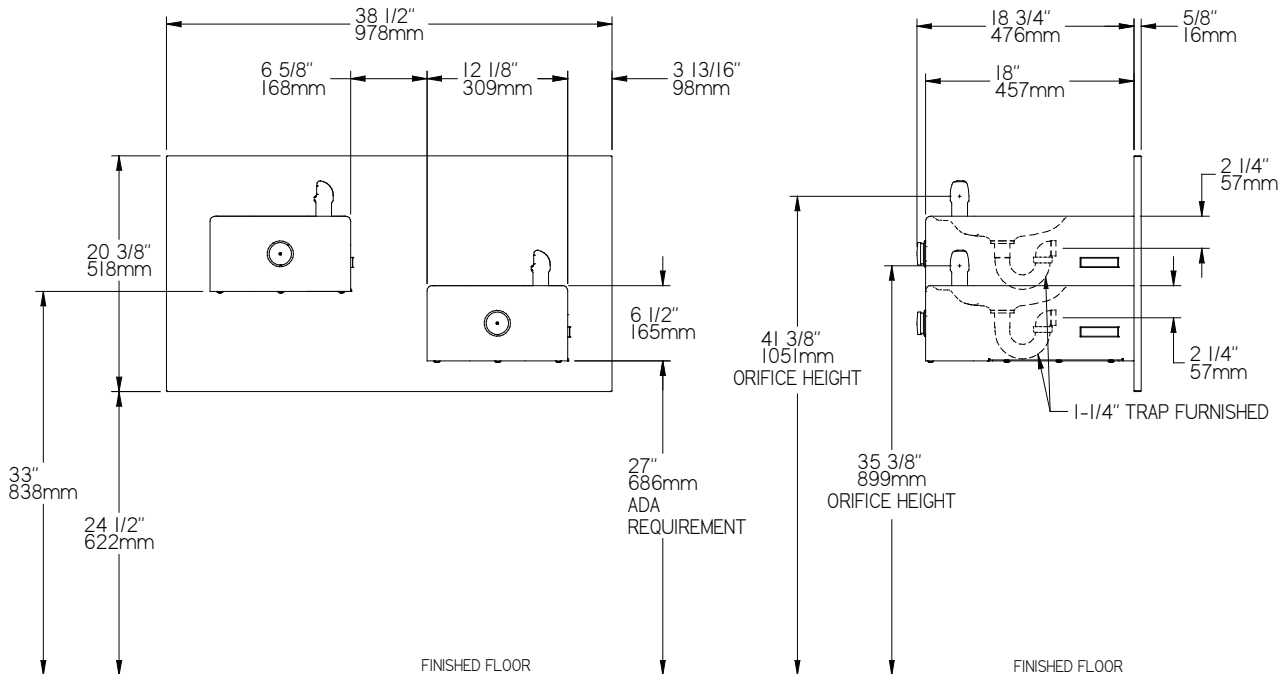
Model
EHWM217C

CONSTRUCTION

EHW(M)217C furnished complete with vandal-resistant bubblers, fully assembled front push buttons, flow regulator 20 to 105 psi and drain, trap assemblies, vandal-resistant 14 gauge bottom cover plates and surface mounting plate. Trap included.

EHW217C does not include the surface mounting plate. To be mounted with **MPW200** in-wall mounting plate. **ML100** in-wall support legs are optional.

Job Name: _____
Model: _____ Qty. _____
Contact: _____
Approval Signature: _____
Notes: _____



In Keeping with our policy of continuing product improvement, Elkay reserves the right to change specification without notice. Please visit elkay.com

This specification describes an Elkay product with design, quality and functional benefits to the user. When making a comparison of other producer's offerings, be certain these features are not overlooked.

**Heavy Duty 14 Gauge Drinking Fountain
Wall Mount, Fully Exposed
Barrier-Free Access
Model EHWM217C**

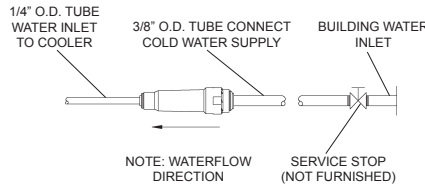
ELKAY®

ROUGH-IN DIMENSIONS

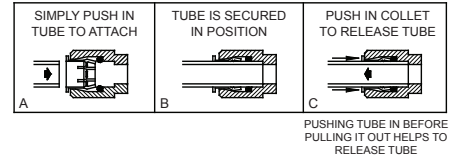
RATED FOR INDOOR AND OUTDOOR USE

INSTALLER NOTE

THIS DRINKING FOUNTAIN IS URNISHED WITH A BUBBLER AND VALVE INCLUDING ALL CONNECTING FITTINGS WHICH ARE MANUFACTURED OF LEAD FREE MATERIAL. SHUT OFF VALVE (NOT FURNISHED) TO ACCEPT 3/8" O.D. UNPLATED COPPER TUBE.

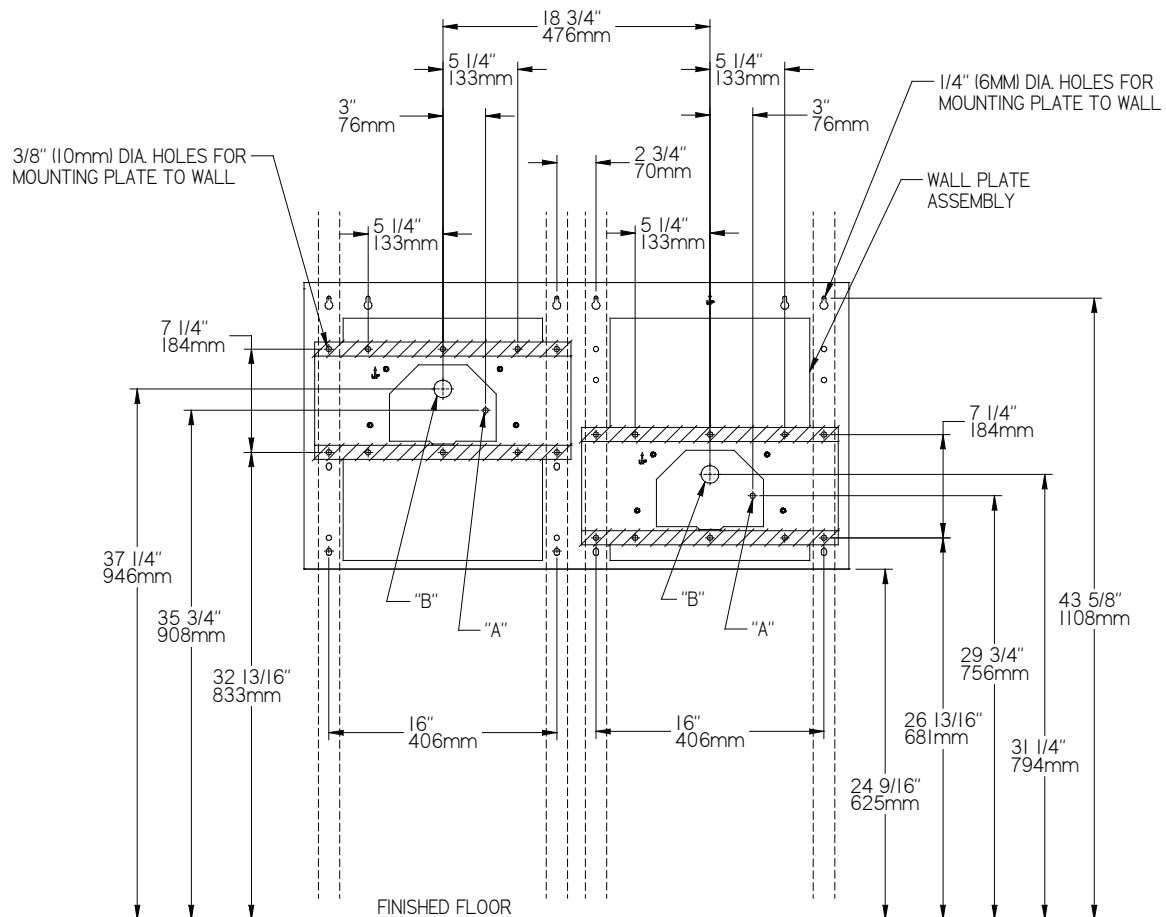


OPERATION OF QUICK CONNECT FITTINGS



When installing EHWM217C which includes a surface mounting plate, refer to the diagrams shown below.

Note: Reinforce the wall in the shaded areas.



LEGEND

A = Recommended water supply location 3/8" O.D. unplated copper tube connect, stubbed 1-1/2" (38mm) from the wall. Shut off by others.

B = Recommended location for waste outlet 1-1/4" O.D. drain, stubbed 6-5/8" (168mm) from the wall.

**Heavy Duty 14 Gauge Drinking Fountain
Wall Mount, Fully Exposed
Barrier-Free Access
Model EHW217C with MPW200**

ELKAY®

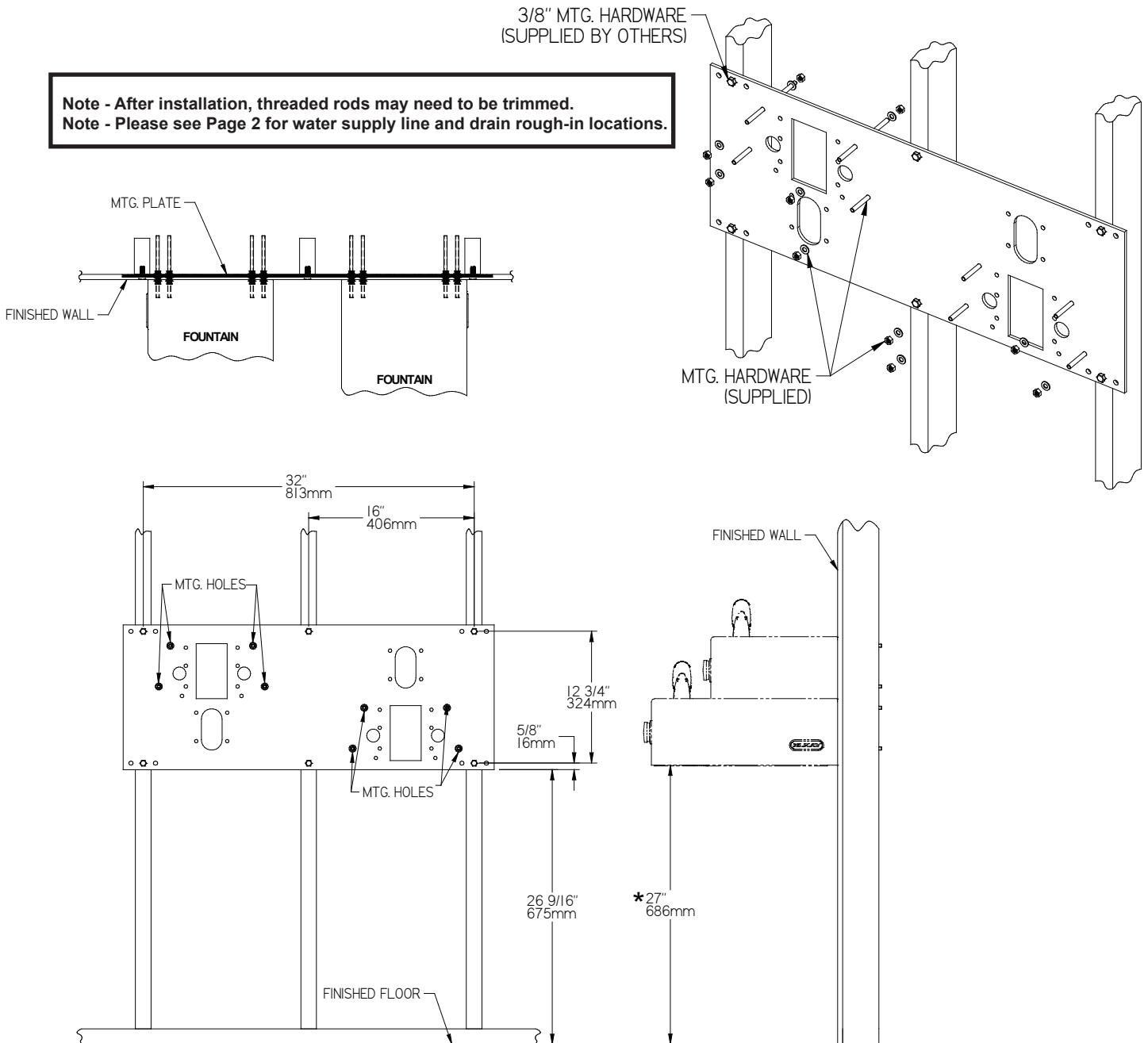
ROUGH-IN DIMENSIONS

RATED FOR INDOOR AND OUTDOOR USE

When installing EHW217C with optional MPW200 in-wall plate mounted directly to wall studs, refer to the diagrams shown below.

For waste and water supply locations refer to the installation/Owners manual.

**Note - After installation, threaded rods may need to be trimmed.
Note - Please see Page 2 for water supply line and drain rough-in locations.**



***ADA REQUIREMENT
NOTE - AFTER INSTALLATION, THREADED RODS MAY NEED TO BE TRIMMED**