

ELKAY® SPECIFICATIONS

No Lead Swirlflo® Countertop Drinking Fountain Model DRKR14C

GENERAL

Countertop mounted drinking fountain constructed of #18 gauge, type 304 stainless steel polished to a lustrous satin finish.

Contoured basin minimizes splashing and is furnished with chrome plated brass push button bubbler complete with in-line flow regulator provides constant stream from 20 to 105 psi water pressure.

Fountain securely mounts to countertop with bracket provided. Meets all known sanitary codes.

NO LEAD DESIGN

THIS DRINKING FOUNTAIN COMPLIES WITH THE LEAD-FREE DEFINITION IN THE SAFE DRINKING WATER ACT OF 1986 AND LEAD CONTAMINATION CONTROL ACT OF 1988.

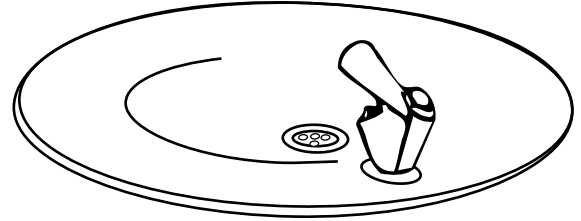
LK142 Bubbler is constructed of completely lead-free material.

CONSTRUCTION

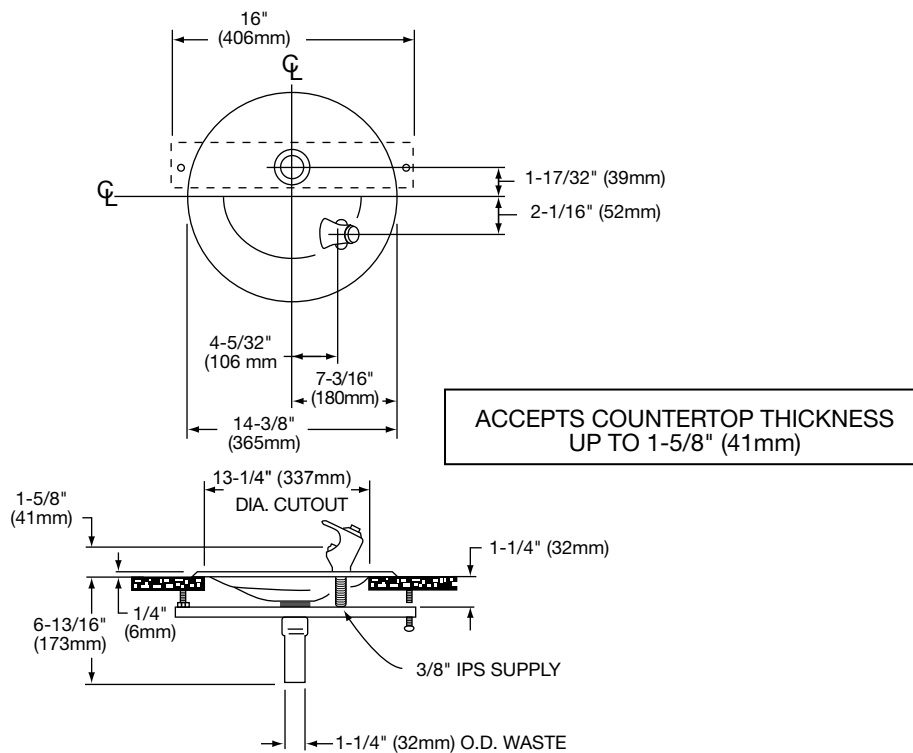
Model DRKR14C countertop type drinking fountain furnished complete with LK142 bubbler.

STANDARDS

This fountain is certified by WQA to lead-free compliance including **NSF/ANSI 61-ANNEX G, AB 1953.**



Model DRKR14C



In keeping with our policy of continuing product improvement, Elkay reserves the right to change product specifications without notice. Please visit elkayusa.com for most current version of Elkay product specification sheets.

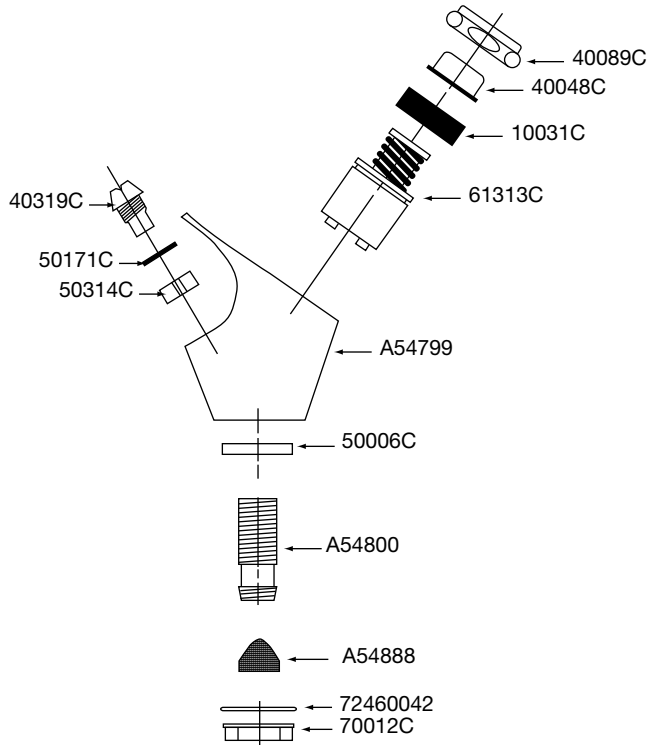
This specification describes an Elkay product with design, quality and functional benefits to the user. When making a comparison of other producers' offerings, be certain these features are not overlooked.

**No Lead Swirlflo® Countertop
Drinking Fountain
Model DRKR14C**

**ELKAY®
PARTS LIST**

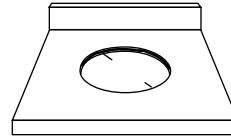
INSTALLER NOTE

THIS DRINKING FOUNTAIN IS FURNISHED WITH A BUBBLER AND VALVE INCLUDING ALL CONNECTING FITTINGS WHICH ARE MANUFACTURED OF COMPLETELY LEAD FREE MATERIAL. IT IS RECOMMENDED THAT SHUT OFF VALVE AND SUPPLY TUBING SUPPLIED BY OTHERS BE NON-METALLIC.



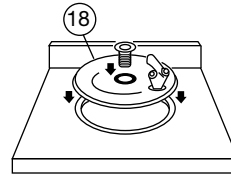
PARTS FOR LK142 BUBBLERS

| PART NUMBER | PART DESCRIPTION |
|--------------|---------------------|
| 10031C | Retaining Nut |
| 40048C | Button |
| 40089C | Retaining Nut |
| 40319C | Orifice |
| 100322740560 | Washer |
| 50171C | "O" Ring |
| 50314C | Flow Straightener |
| A54799 | Body |
| A54800 | Nipple |
| A54888 | Screen |
| 61313C | Regulator Cartridge |
| 70012C | Locknut |
| 72460042 | Washer |



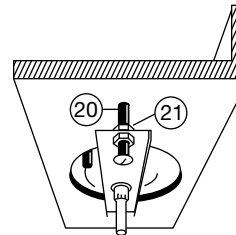
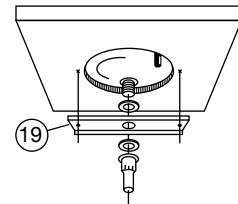
MAKE 13-1/4" (337mm) DIAMETER CUTOUT IN DESIRED LOCATION ON COUNTERTOP

INSTALL BUBBLER ASSEMBLY TO FOUNTAIN. ALIGN RECESS IN UNDERSIDE OF BUBBLER WITH DIMPLE IN FOUNTAIN.

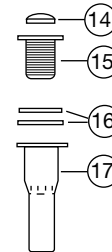


APPLY CAULK (NOT FURNISHED) AROUND CUTOUT AND WASTE OPENING. PLACE FOUNTAIN OVER OPENING AND DROP IN STRAINER.

FROM UNDERSIDE . . . POSITION AND SECURE TIEDOWN BRACKET USING WASTE FITTING.



USE SCREWS WITH NUTS TO TIGHTEN UNIT TO COUNTERTOP. WIPE OFF EXCESS CAULKING.



**PARTS FOR DRKR14C
DRINKING FOUNTAIN**

| ITEM NO. | NO. REQD. | PART NUMBER | PART DESCRIPTION |
|----------|-----------|-------------|----------------------|
| 14 | 1 | 72001511 | Grid Strainer |
| 15 | 1 | 72001514 | Strainer Body |
| 16 | 2 | 72001513 | Rubber Washer |
| 17 | 1 | 72001655 | Tailpiece |
| 18 | 1 | 55000962 | Countertop Basin |
| 19 | 1 | 55000963 | Tie Down Bracket |
| 20 | 2 | 74080022 | 1/4-20 x 2-1/2 Screw |
| 21 | 4 | 74080005 | 1/4-20 Hex Nut |