



ELEGANT

FURNITURE & LIGHTING™

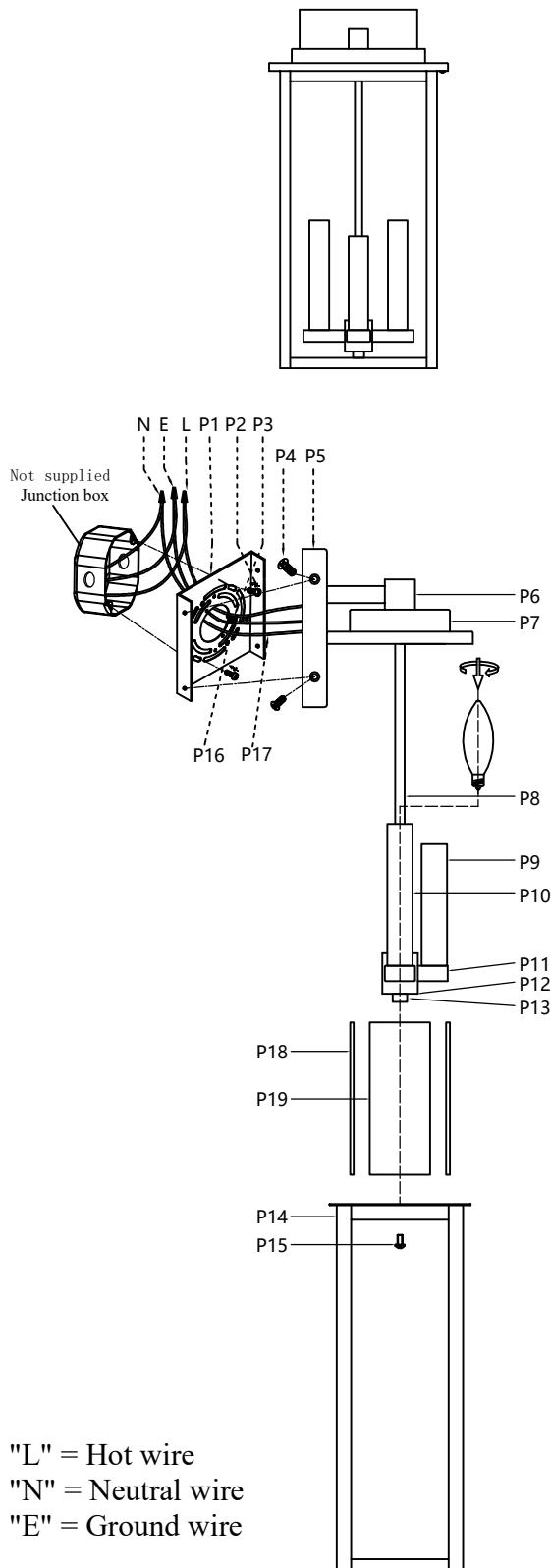
Collection: Bodine

Installation manual for:

OD501W18BK W9" D6" H18" L3

Installation instructions:

- 1.Black wire from ceiling(junction box) attaches to "L"wire from the fixture
- 2.White wire from ceiling(junction box) attaches to "N"wire from the fixture
- 3."E" wire from the ceiling attaches to "E" wire from the fixture.
- 4.Secure mounting bracket to the junction box.
- 5.Install the lamp body to the mounting bracket by screws(P4).
- 6.Install E12 light source.(Bulbs not supplied) .
- 7.Fasten the light frame (P14) to the light body (P7) with screws (P15).



"L" = Hot wire
"N" = Neutral wire
"E" = Ground wire

Part Number	Part	Picture	Description	Qty
M13W03	P1		Mounting bracket (5.1"*5.8"*0.6")	1
	P2		Mounting bracket screw	2
P-OD501W18BK	P3		Screw	1
	P4		Screw	4
	P5		Siding(5.9"*5.9"*0.8")	1
	P6		Support Arm	1
	P7		Lamp cover(9"*5.2"*1.1")	1
	P8		Connecting pipe	1
	P9		Cannula	1
	P10		Cannula	2
	P11		Mounting box	1
	P12		Mounting box cover	1
	P13		Nut	1
	P14		Body (L6. 9"*W4. 6"*H12")	1
	P15		Screw	2
	P16		UL18#Ground wire,L10"	1
	P17		UL18#,L34"	1
GP13T03	P17		Glass sheet (L14.7"*W7.4")	2
	P18		Glass sheet (L14.7"*W4.1")	2