

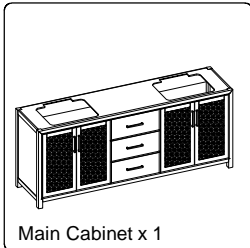


## ASSEMBLY INSTRUCTION

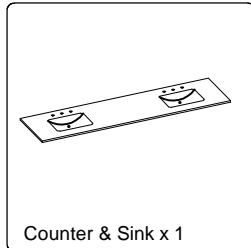
ITEM#:VF29584D

- Prior to installation please check received items against the "Parts List". Please report any missing items to your retailer immediately.
- Protect all surfaces from sharp objects, high heat sources, direct prolonged sunlight and chemical hazards.
- Professional installation recommended.
- Please install on a level surface. If minor door and drawer alignment is required, please follow the easy directions below.

### PARTS LIST

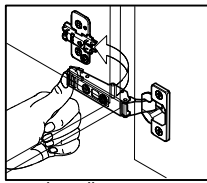


Main Cabinet x 1

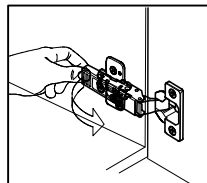


Counter & Sink x 1

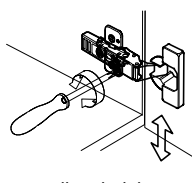
### HOW TO ADJUST HINGES (if required)



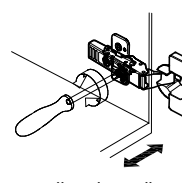
install



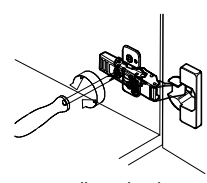
remove



adjust height

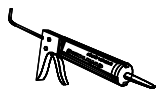


adjust laterally



adjust depth

### REQUIRED TOOLS NOT IN BOX



Silicone sealant



Spirit Level



Phillips Screwdriver



Tape measure



Pencil



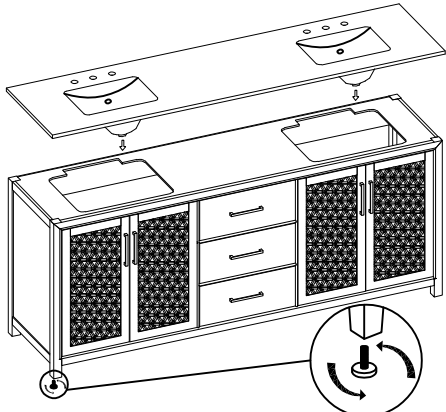
Electric Drill



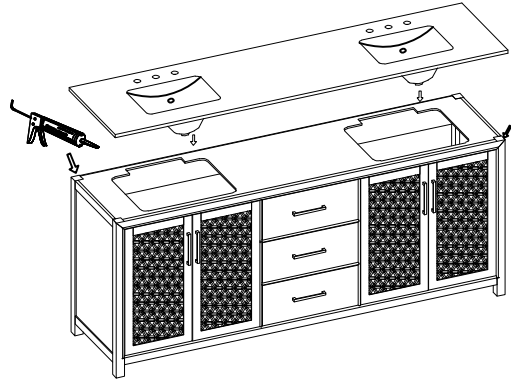
## ASSEMBLY INSTRUCTION

ITEM#:VF29584D

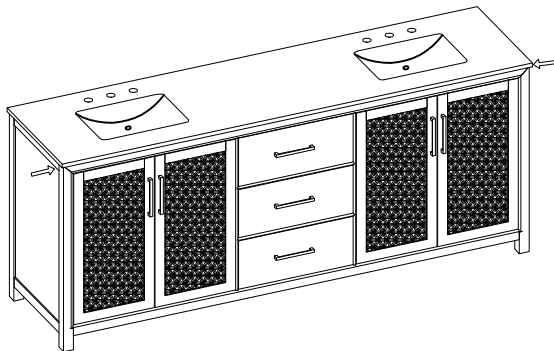
### INSTALLATION INSTRUCTIONS



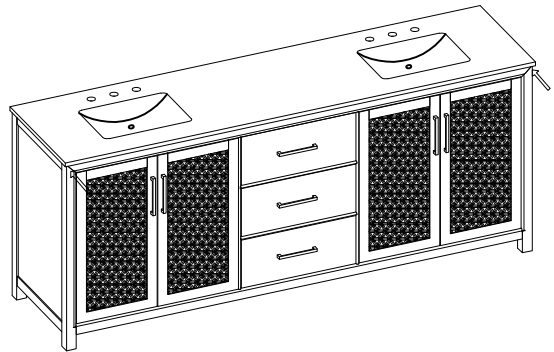
Step1: Remove the stone surface and cabinet body from the carton.



Step2: Apply glue to the four upper sides of the cabinet body.



Step3: Place the stone face on top and align the stone face to the correct position.



Step4: Silicon glue is applied to all four sides below the stone surface



# ASSEMBLY INSTRUCTION

ITEM#:VF29584D

## Backboard Cutouts

