

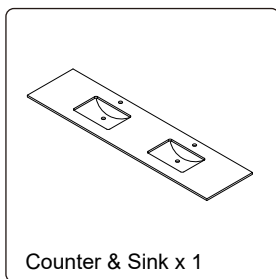
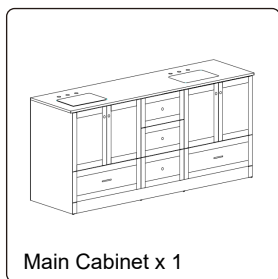


ASSEMBLY INSTRUCTION

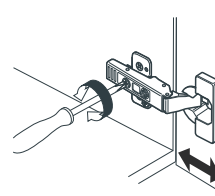
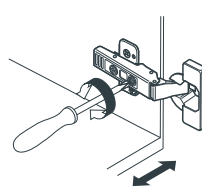
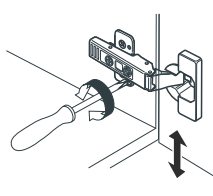
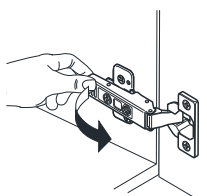
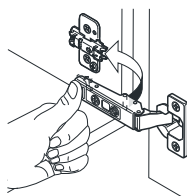
ITEM#:VF2884D

- Prior to installation please check received items against the "Parts List". Please report any missing items to your retailer immediately.
- Protect all surfaces from sharp objects, high heat sources, direct prolonged sunlight and chemical hazards.
- Professional installation recommended.
- Please install on a level surface. If minor door and drawer alignment is required, please follow the easy directions below.

PARTS LIST



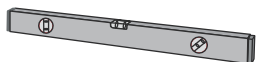
HOW TO ADJUST HINGES (if required)



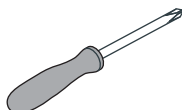
REQUIRED TOOLS NOT IN BOX



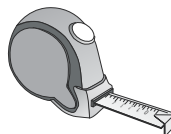
Silicone sealant



Spirit Level



Phillips Screwdriver



Tape measure



Pencil



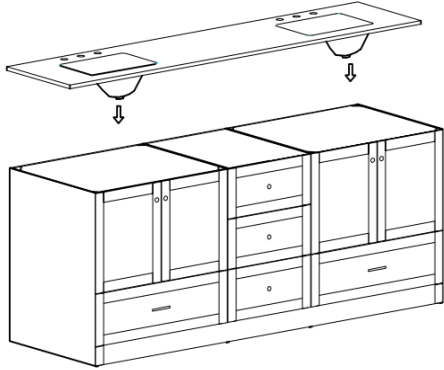
Electric Drill



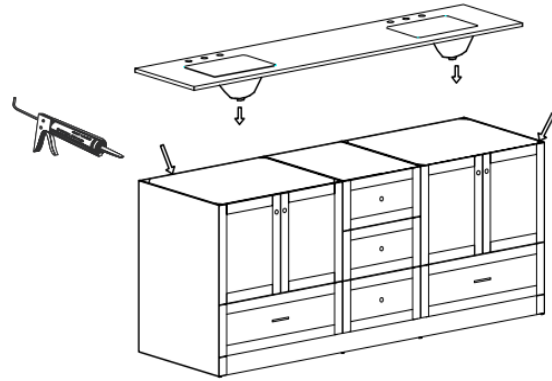
ASSEMBLY INSTRUCTION

ITEM#:VF2884

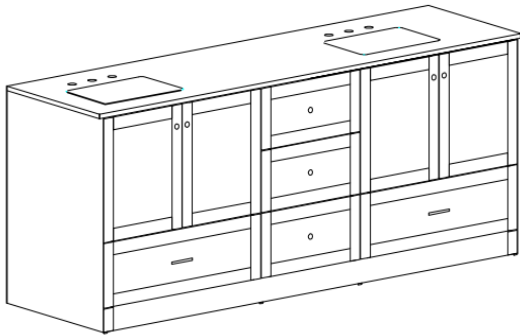
INSTALLATION INSTRUCTIONS



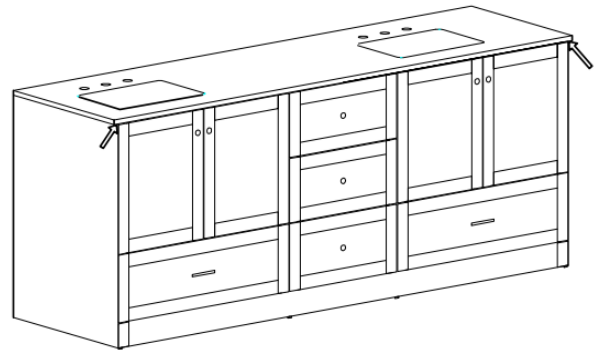
Step1: Remove the stone surface and cabinet body from the carton.



Step2: Apply glue to the four upper sides of the cabinet body.



Step3: Place the stone face on top and align the stone face to the correct position.



Step4: Silicon glue is applied to all four sides below the stone surface



ASSEMBLY INSTRUCTION

ITEM#:VF2884

Backboard Cutouts

