

Under-Counter Refrigerator Drawers

EI24RD65H S



Perfect Set™ Controls

These integrated electronic controls offer precise temperature control and their top-of-drawer location makes them easy to program.



Luxury-Glide™ System

Drawers smoothly open and fully extend at the touch of a finger.



Luxury-Design™ Lighting

Our ramp-up designer LED lighting is as beautiful as it is functional.



Condiment Tray & Additional Storage Shelf

The covered condiment tray lifts out as a whole and also has four removable compartments for extra storage. In addition, the bottom drawer offers a three-position shelf that can be added for additional storage and organization.

24" FRESH FOOD REFRIGERATOR DRAWERS

| | |
|-------------------|-------------|
| Capacity | 6.0 Cu. Ft. |
| Configuration | 2 Drawers |
| Installation Type | Built In |

Features

| | |
|---|-----|
| IQ-Touch™ Electronic Controls | Yes |
| Fully Integrated Control Panel | Yes |
| Blue LED Display | Yes |
| Luxury-Glide™ Full-Extension Self-Closing Drawers | Yes |
| Luxury-Design™ Lighting | Yes |
| Perfect Set™ Controls | Yes |
| PureAdvantage® Air Filtration | Yes |
| Electronic Control Lock | Yes |
| Display Temp Mode (°C or °F) | Yes |
| Door Ajar Acoustic Alarm | Yes |
| High-Temperature Acoustic Alarm | Yes |
| Power Failure Acoustic Alarm | Yes |
| Mute Sound Control | Yes |
| Power-On/Off Control | Yes |
| Vacation Mode | Yes |
| Sabbath Mode (Star-K® Certified) | Yes |
| Holds 12" Bottle (Upper and Lower Drawer) | Yes |
| Storage Shelf (Lower Drawer) | Yes |
| Frost-Free Performance | Yes |
| Dynamic Condenser | Yes |

Additional Features

| | |
|---|-----|
| Signature Soft-Arc Drawer Front and Handle Design | Yes |
| Adjustable Leveling Legs | 4 |
| ENERGY STAR® | Yes |

Accessories

| | |
|--|----------|
| Condiment Tray – PN# 241965501 | Included |
| PureAdvantage® Replacement Air Filter – PN# EAFCBF | Included |

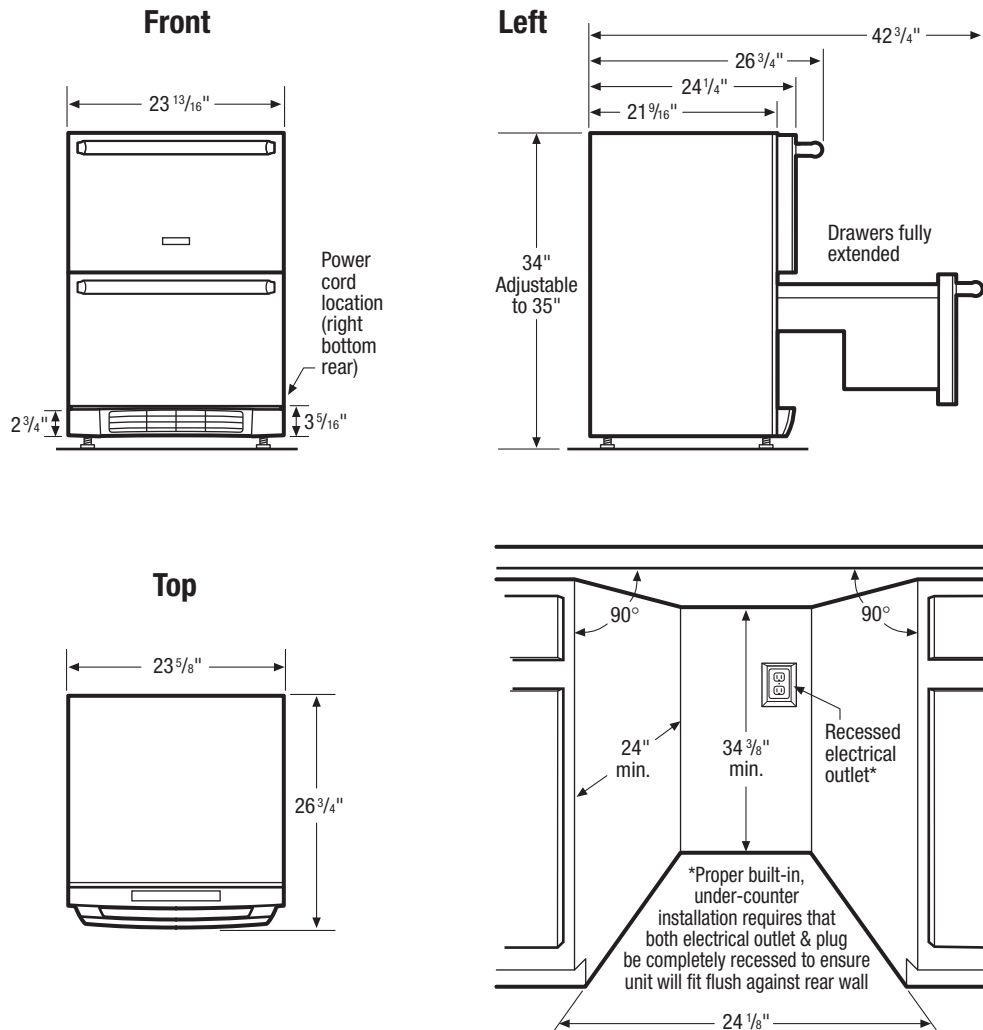
Specifications

| | | |
|---|-------------------|---|
| Color – | Stainless Steel | S |
| Cavity Dimensions – | | |
| Height (Upper Drawer) | 12-3/64" | |
| (Lower Drawer) | 12-3/16" | |
| Width | 18-1/16" | |
| Depth | 18-9/32" | |
| Overall Exterior Dimensions – | | |
| Height | 34" – 35" | |
| Width | 23-13/16" | |
| Depth (to Center of Arc) | 24-1/4" | |
| (Fully Extended Including Handle) | 42-3/4" | |
| Temperature Range | 33° F - 47° F | |
| Electrical Cable | Yes | |
| Power Supply Connection Location | Right Bottom Rear | |
| Voltage Rating | 120V/60Hz/15A | |
| Connected Load (kW Rating) @ 120 Volts‡ | 0.16 | |
| Minimum Circuit Required (Amps) | 15 | |
| Shipping Weight (Approx.) | 150 Lbs. | |

‡For use on adequately wired 120V, dedicated circuit having 2-wire service with a separate ground wire. Appliance must be grounded for safe operation.

NOTE: Always consult local and/or national electric codes. Refer to Product Installation Guide for detailed installation instructions on the web at electroluxappliances.com.

Specifications subject to change.



Under-Counter Refrigerator Drawers Specifications

- Product Weight – 140 Lbs.
- Voltage Rating – 120V/60 Hz/15 Amps
- Connected Load (kW Rating) @ 120 Volts = 0.16kW (For use on adequately wired 120V, dedicated circuit having 2-wire service with a separate ground wire. Appliance must be grounded for safe operation.)
- Amps @ 120 Volts = 1.33 Amps
- Electrical cable supplied.
- Always consult local and/or national electric codes.
- Unit is designed for built-in, under-counter installation only with use of Anti-Tip Kit and can NOT be used in freestanding installation.
- Built-in, under-counter installation does not require additional airspace for top, sides or rear of unit.
- Proper built-in, under-counter installation requires that both electrical outlet and plug be completely recessed to ensure unit will fit flush against rear wall.

- To allow for ease of installation and removal, it is recommended that cabinet rough opening dimensions be increased by at least 1/4" over product's dimensions.
- For proper ventilation, unit can NOT be installed behind closed doors; front grille MUST remain unobstructed.
- Must be positioned on flat, level surface, capable of supporting entire weight when fully loaded.
- Leveling legs supplied to adjust height and level unit.
- Do not position unit near any heat source to ensure optimum performance.
- Allow 17" minimum for handle clearance with drawers fully extended.

Note: For planning purposes only. Refer to Product Installation Guide on the web at electroluxappliances.com for detailed instructions.

Electrolux Major Appliances, N.A.

USA • 250 Bobby Jones Expressway • Augusta, GA 30907 • 1-877-4electrolux (1-877-435-3287) • electroluxappliances.com
 CANADA • 5855 Terry Fox Way • Mississauga, ON L5V 3E4 • 1-800-265-8352 • electroluxappliances.ca