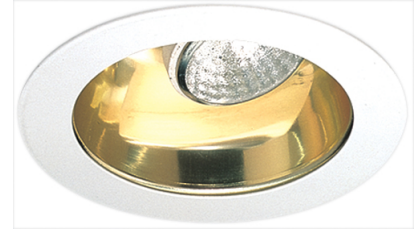


4" Reflector with Adjustable Socket Holder Bracket



Features

- Reflector with Bracket, 25° tilt.
- Lamp: 50W PAR20, 55W PAR16.
- O.D.: 4 3/4".

Specifications

Technical Details

Construction:

- Meticulously manufactured trim with a powder coated or anodized finish.
- Integral gimbal ring holds lamp and allows for 25° internal adjustability while keeping a flush look on the ceiling.

Installation: Clips securely mount trim into the housing and keeps ring flush with ceiling.

Compatible Housing: Compatible with 4" Line Voltage IC and Non-IC versions.

Lamp: Compatible with Medium base (E26) PAR type.

Options



Gold w/White Ring



Black w/White Ring



All White



Clear w/White Ring

Product Numbers

Item	Finish
EL977C	Clear w/White Ring
EL977G	Gold w/White Ring
EL977B	Black w/White Ring
EL977W	All White

Product Number Builder Example: EL977C

4" Reflector with Bracket	Finish
EL977	
W All White B Black w/White Ring C Clear w/White Ring G Gold w/White Ring	