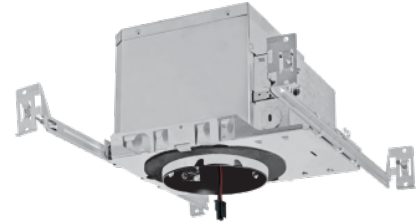


4" Koto™ Architectural Maximum Adjustability High Lumen IC Airtight Housing



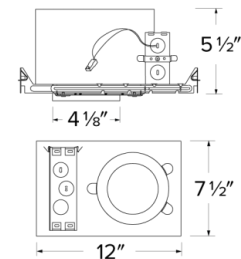
Koto™ Architectural High Lumen Housing: 120V (Triac/ELV) or 120/277V (0-10V/Triac/ELV) with optional Emergency Battery Backup. Must be used with Koto™ Architectural LED Light Engines (ELK21 Series Only).

Features

- IC Airtight for direct contact with insulation.
- Easy-to-Remove driver.
- Optional 90 minutes, 120/277 VAC, 60Hz, Emergency Backup.
- Flicker-Free Dimming.
- USA designed and assembled.
- Limited 5 year warranty.
- For use with ELCO Koto™ Architectural LED Light Engines (ELK21 Series Only).

Specifications

Wattage	18.9W
Lumens	1500 lm
Voltage	120V
Dimmable	Triac/ELV
Lamp Type	LED
Power Factor	≥0.95
Damp Location	Listed



Technical Details

Construction: Double Wall IC Rated for direct contact with insulation. For use in IC and Non-IC conditions. Up to 1500 lumens. Housing adjusts in frame to accommodate up to 1 1/2" ceiling thickness. Airtight housing with gasket to restrict airflow in accordance with ASTM E-283 air-tight requirements.

Installation: Designed for ceiling plenums where 2x6 joists or taller are used. High strength hanger bars can easily be nailed to joists. Suitable for T-grid and drop ceiling applications. See installation sheet for detailed information. Emergency Battery Back-up Option requires access from above. For use with ELCO Koto™ Architectural LED Light Engines (ELK21 Series Only)

Junction Box: Positioned to accommodate straight conduit runs. Two 3/4" knockouts, Seven 1/2" trade size conduit knockouts, One 3/8" knockout. Four Pry-out knockout slots for easy romex installation.

Hanger Bars: Pre Installed hanger bars with True Nail easy installation in regular lumber, engineered lumber, and Laminated Beams. Integral T-bar slots for easy installation in T-Bars. Spans up 24" and can be repositioned 90°. Score lines allow for tool-free hanger bar size reduction. Integral leveling flange allows for single-person installation while easily aligning the housings with the joists.

Electrical: Driver is rated for 120V and 277V input (120/277V). High Efficiency driver with a power factor > 0.95. Access from above required for EM option.

Emergency Battery Pack: Optional 90 minute battery pack available with test indicator switch. Note that double wall housings require Access From Above Ceiling for Battery Maintenance.

Dimmability: 3-in-1 dimming: Triac, ELV and 0-10V dimming in one driver. 0-10V dimming down to 5% with a compatible dimmer. Can be specified with Lutron drivers for 0.1% and 1% dimming. For a full list of dimmers refer to the Dimmer Compatibility List.

Listings: UL Listed for Damp Location and for Wet Location with select trims. UL Listed for Direct Contact with Insulation and Combustible Material. UL Listed for Feed Through.

Product Number

Item	Description	Lamp type	Lumens	Watts	Voltage	Dimming
E4LK781CA	4" Koto Architectural High Lumen Housing	LED	1500 lm	18.9W	120V	Triac/ELV

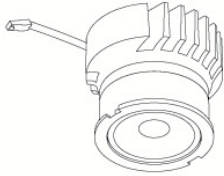
Product Custom Image

Compatible Products



For use with Dedicated 4" Architectural ICA LED Housings

Koto™ Architectural LED Light Engine



Koto™ LED Light Engine
ELK21

PRODUCT NUMBER BUILDER			
Koto™ LED Light Engine	Lumens	Color Temperature	Beam Angle
ELK	21 1100-1500lm	27D 2700K 30D 3000K 35D 3500K 40D 4000K	(blank) 38° lens (Standard) -S 18° lens -N 25° lens -W 60° lens

ACCESSORIES	
Lens	Reflectors
EP731C 18° Lens	EP735C 15°
EP732C 25° Lens	EP736C 25°
EP733C 38° Lens	EP737C 38°
EP734C 60° Lens	EP738C 60°
<small>*EP732C, EP733C, EP734C Included</small>	
Secondary Optics	
L45 Hex Louver	
L46 Linear Louver	
L47 Spread Louver	

Reflector
ELK4118
Finishes:
(W, BB, BZ, B, C, H)

Adjustable Gimbal
ELK4129
Finishes:
(W, BB, BZ, B, C, H)

Adjustable Pinhole
ELK4127
Finishes:
(B, BB, BZ)

Adjustable Baffle
ELK4193
Finishes:
(W, BB, B)

Slot Aperture
ELK4130
Finishes:
(W)

Rotatable Slot Aperture
ELK4120
Finishes:
(W)

Adj. Wall Wash
ELK4122
Finishes:
(W)

Reflector
ELK4218
Finishes:
(W, BB, BZ, B, C, H)

Adjustable Gimbal
ELK4229
Finishes:
(W, BB, BZ, B, C, H)

Adjustable Pinhole
ELK4227
Finishes:
(B, BB, BZ)

Adjustable Phenolic Baffle
ELK4293
Finishes:
(W, BB, B)

Adj. Slot Rotatable Aperture
ELK4220
Finishes:
(W)

Adjustable Wall Wash
ELK4222
Finishes:
(W)

Adjustable Reflector
ELK4282
Finishes:
(W)

Adjustable Baffle
ELK4284
Finishes:
(W)

*Finishes: **W** - All White, **BB** - All Black, **BZ** - All Bronze, **B** - Black Reflector w/White Ring, **C** - Chrome Reflector w/White Ring, **H** - Haze Reflector w/White Ring



Compatible Products

For use with Dedicated 4" Architectural ICA LED Housings



4" Pex™ Adjustable Trimless



Smooth Reflector

ELK430

Finishes:
(W, B, BZ)



Baffle

ELK434

Finishes:
(W, B, BZ)



Must be used
with Maximum
Adjustability Housing

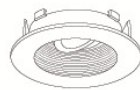
4" Flexa™ Twist-&-Lock Trims



Round Reflector

ELK4721

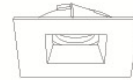
Finishes:
(WW, BB, BZBZ, BW, CC, CW,
HW, CN)



Round Baffle

ELK4723

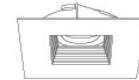
Finishes:
(WW, BB, BZBZ, BW)



Square Reflector

ELK4741

Finishes:
(WW, BB, BZBZ, BW, HW)
**Not for Remodel Housing*



Square Baffle

ELK4743

Finishes:
(WW, BB, BZBZ, BW)
**Not for Remodel Housing*

*Finishes: **W** - All White, **BB** - All Black, **BZ** - All Bronze, **B** - Black Reflector w/White Ring,
C - Chrome Reflector w/White Ring, **H** - Haze Reflector w/White Ring