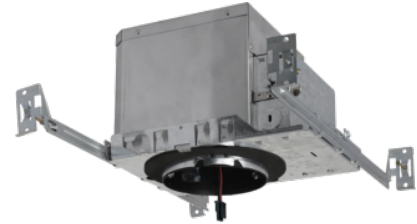


3" Koto™ Architectural Maximum Adjustability High Lumen IC Airtight Housing



Koto™ Architectural High Lumen Housing: 120V (Triac/ELV) or 120/277V (0-10V/Triac/ELV) with optional Emergency Battery Backup. Must be used with Koto™ Architectural LED Light Engines (ELK21 Series Only).

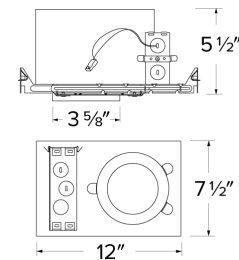
Features

- IC Airtight for direct contact with insulation.
- Easy-to-Remove driver.
- Optional 90 minutes, 120/277 VAC, 60Hz, Emergency Backup.
- Flicker-Free Dimming.
- USA designed and assembled.
- Limited 5 year warranty.
- For use with ELCO Koto™ Architectural LED Light Engines (ELK21 Series Only).

Specifications

Wattage	15.7W
Lumens	1250 lm
Voltage	120V
Dimmable	Triac/ELV
Lamp Type	LED
Power Factor	≥0.95
Damp Location	Listed

Dimensions



Technical Details

Construction: Double Wall IC Rated for direct contact with insulation. For use in IC and Non-IC conditions. Up to 1500 lumens. Housing adjusts in frame to accommodate up to 1 1/2" ceiling thickness. Airtight housing with gasket to restrict airflow in accordance with ASTM E-283 air-tight requirements.

Installation: Designed for ceiling plenums where 2x6 joists or taller are used. High strength hanger bars can easily be nailed to joists. Suitable for T-grid and drop ceiling applications. See installation sheet for detailed information. Emergency Battery Back-up Option requires access from above. For use with ELCO Koto™ Architectural LED Light Engines (ELK21 Series Only)

Junction Box: Positioned to accommodate straight conduit runs. Two 3/4" knockouts, Seven 1/2" trade size conduit knockouts, One 3/8" knockout. Four Pry-out knockout slots for easy romex installation.

Hanger Bars: Pre Installed hanger bars with True Nail easy installation in regular lumber, engineered lumber, and Laminated Beams. Integral T-bar slots for easy installation in T-Bars. Spans up 24" and can be repositioned 90°. Score lines allow for tool-free hanger bar size reduction. Integral leveling flange allows for single-person installation while easily aligning the housings with the joists.

Electrical: Driver is rated for 120V and 277V input (120/277V). High Efficiency driver with a power factor > 0.95.

Emergency Battery Pack: Optional 90 minute battery pack available with test indicator switch. Note that double wall housings require Access From Above Ceiling for Battery Maintenance.

Dimmability: 3-in-1 dimming: Triac, ELV and 0-10V dimming in one driver. 0-10V dimming down to 5% with a compatible dimmer. Can be specified with Lutron drivers for 0.1% and 1% dimming. For a full list of dimmers refer to the Dimmer Compatibility List.

Listings: UL Listed for Damp Location and for Wet Location with select trims. UL Listed for Direct Contact with Insulation and Combustible Material. UL Listed for Feed Through.

Product Number

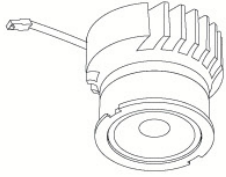
Item	Description	Lamp type	Lumens	Watts	Voltage	Dimming
E3LK53ICA	Maximum Adjustability Housing	LED	1250 lm	15.7W	120V	Triac/ELV

Compatible Products

For use with Dedicated 3" Architectural ICA LED Housings



Koto™ Architectural LED Light Engine



Koto™ LED Light Engine
ELK21

PRODUCT NUMBER BUILDER			
Koto™ LED Light Engine	Lumens	Color Temperature	Beam Angle
ELK	21 1100-1500lm	27D 2700K 30D 3000K 35D 3500K 40D 4000K	(blank) 38° lens (Standard) -S 18° lens -N 25° lens -W 60° lens

ACCESSORIES



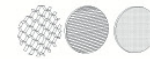
Lens

EP731C	18° Lens
EP732C	25° Lens
EP733C	38° Lens
EP734C	60° Lens

Reflectors

EP735C	15°
EP736C	25°
EP737C	38°
EP738C	60°

*EP732C, EP733C, EP734C Included



Secondary Optics

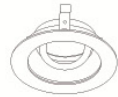
L45	Hex Louver
L46	Linear Louver
L47	Spread Louver

3" Pex™ Twist-&-Lock Trims



Deep Reflector

ELK3618
Finishes:
(W, BB, BZ, B, C, H)



Adjustable Gimbal

ELK3629
Finishes:
(W, BB, BZ, B, C, H)



Adjustable Pinhole

ELK3627
Finishes:
(B, BB, BZ)



Adjustable Baffle

ELK3693
Finishes:
(W)



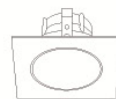
Slot Aperture

ELK3620
Finishes:
(W)



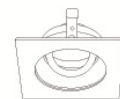
Adj. Reflector Wall Wash

ELK3622
Finishes:
(W)



Sq. Deep Reflector

ELK3318
Finishes:
(W, BB, BZ, B, C, H)



Sq. Adjustable Gimbal

ELK3329
Finishes:
(W, BB, BZ, B, C, H)



Sq. Adjustable Wall Wash

ELK3322
Finishes:
(W)



Sq. Adjustable Baffle

ELK3393
Finishes:
(W)



Sq. Adjustable Pinhole

ELK3327
Finishes:
(B, BB, BZ)

*Finishes: **W** - All White, **BB** - All Black, **BZ** - All Bronze, **B** - Black Reflector w/White Ring, **C** - Chrome Reflector w/White Ring, **H** - Haze Reflector w/White Ring



Must be used with Maximum Adjustability Housing