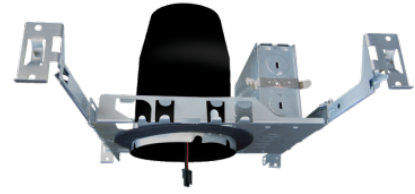


# 3" IC Airtight New Construction Housing for Architectural Koto™ LED Engine



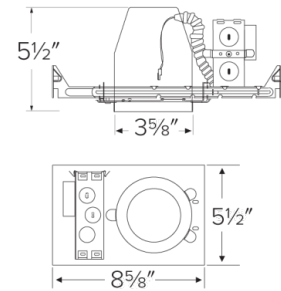
## Features

- IC Airtight for direct contact with insulation.
- Koto™ Architectural Housing: 120/277V 0-10V/Triac/ELV or 120V Triac/ELV with optional Emergency Battery Backup.
- Must be used with Architectural Koto™ LED Light Engines (ELK19 or ELK21 Series).
- Lumen output based on module

## Specifications

<b>Wattage</b>	10.5W
<b>Lumens</b>	750 (ELK19) - 950 (ELK21) lm
<b>Voltage</b>	120/277V
<b>Dimmable</b>	0-10V/Triac/ELV

## Dimensions



## Technical Details

**Lamp:** Designed for use with ELCO Architectural Koto™ LED Light Engines (ELK19 or ELK21 Series)

**Construction:** Single wall IC rated for direct contact with insulation, for use in IC or non-IC conditions. Housing adjusts in frame to accommodate up to 1 1/2" ceiling thickness. Airtight housing with gasket to restrict airflow in accordance with ASTM E-283 air-tight requirements.

**Installation:** Designed for ceiling plenums where 2x6 joists or taller joists are used. High strength hanger bars can easily be nailed to joists. Maximum hole cutout is 3 5/8". Suitable for t-grid and drop ceiling applications. See installation sheet for detailed information.

**Junction Box:** Positioned to accommodate straight conduit runs. Seven 1/2" trade size conduit knockouts, four 3/4" knockouts. Pry-out knockout slots. 4 Romex pryouts with strain relief.

**Hanger Bars:** Pre-installed hanger bars with True Nail facilitate easy installation in regular lumber, engineered lumber, and laminated beams. Integral T-bar slots for easy installation in T-bars. Spans up to 24" and can be repositioned 90°. Score lines allow for tool-free hanger bar size reduction. Integral leveling flange allows for single-person installation while aligning the housings with the joists.

**Electrical:** Input Voltage: 120V or 120/277V

**Dimmability:** Triac/ELV or 0-10V/Triac/ELV

**Listings:** UL Listed for Damp Location. UL Listed for Wet Location with select trims. UL Listed for Feed Through. UL Listed for Direct Contact with Insulation and Combustible Material. Airtight per ASTM E-283. Install a JA8-2016-E lamp/luminaire for Title 24 Compliance.

**Warranty:** ELCO Lighting warrants products will be free from defects in materials and workmanship for a period of 5 years.

## Product Number

Item	Description	Lumens	Watts	Voltage	Dimming
E3LK66ICAD	New Construction	750 (ELK19) - 950 (ELK21) lm	10.5W	120/277V	0-10V/Triac/ELV

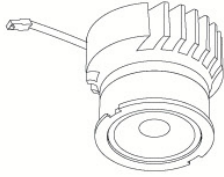
## Product Number Builder Example: E3LK65ICA

3" Koto™ Standard ICA Housing	Voltage	Dimming
<b>E3LK</b>	<b>65</b> 120V <b>66</b> 120/277V	<b>ICA</b> Triac/ELV <b>ICAD</b> 0-10V/Triac/ELV

# Compatible Products

For use with Dedicated 3" Architectural ICA LED Housings

## Koto™ Architectural LED Light Engine



**Koto™ LED Light Engine**  
ELK19 - ELK21

PRODUCT NUMBER BUILDER			
Koto™ LED Light Engine	Lumens	Color Temperature	Beam Angle
ELK			
19	750 - 850 lm	27D 2700K	(blank) 38° lens (Standard)
21	1100 - 1500 lm	30D 3000K	-S 18° lens
		35D 3500K	-N 25° lens
		40D 4000K	-W 60° lens
		SD Sunset Dimming (ELK19 Only)	

ACCESSORIES	
<b>Lens</b>	<b>Reflectors</b>
EP731C 18° Lens	EP735C 15°
EP732C 25° Lens	EP736C 25°
EP733C 38° Lens	EP737C 38°
EP734C 60° Lens	EP738C 60°
<small>*EP732C, EP733C, EP734C Included</small>	
<b>Secondary Optics</b>	
L45 Hex Louver	
L46 Linear Louver	
L47 Spread Louver	

## 3" Pex™ Twist-&-Lock Trims



**Deep Reflector**

**ELK3618**  
Finishes:  
(W, BB, BZ, B, C, H)



**Adjustable Gimbal**

**ELK3629**  
Finishes:  
(W, BB, BZ, B, C, H)



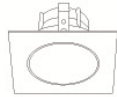
**Adjustable Pinhole**

**ELK3627**  
Finishes:  
(B, BB, BZ)



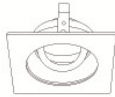
**Adjustable Baffle**

**ELK3693**  
Finishes:  
(W)



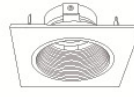
**Sq. Deep Reflector**

**ELK3318**  
Finishes:  
(W, BB, BZ, B, C, H)



**Sq. Adjustable Gimbal**

**ELK3329**  
Finishes:  
(W, BB, BZ, B, C, H)



**Sq. Adjustable Baffle**

**ELK3393**  
Finishes:  
(W)



**Sq. Adjustable Pinhole**

**ELK3327**  
Finishes:  
(B, BB, BZ)

\*Finishes: **W** - All White, **BB** - All Black, **BZ** - All Bronze, **B** - Black Reflector w/White Ring, **C** - Chrome Reflector w/White Ring, **H** - Haze Reflector w/White Ring