

# 2" Teak™ ICA New Construction Frame



IC Rated frame with no bulky boxes. Easy-Pull driver included on frame. To be used with Teak™ LED Light engines only.

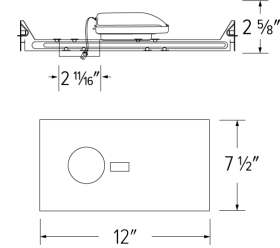
## Features

- Frame to be used with Teak™ Light Engines only
- UL Listed for direct contact with insulation
- Driver specified for 850 lumens (10.5W) or 1100 lumens (12.5W)
- Driver specified for 120V (Triac/ELV) or 120/277V (120V: 0-10V Triac/ELV, 277V 0-10V)
- Damp Location Listed, Wet Location with Wet Location Teak™ Light Engines
- JA8-2016-E, UL, and Energy Star Qualified

## Specifications

<b>Wattage</b>	10.5W
<b>Lumens</b>	850 lm
<b>Voltage</b>	120V
<b>Dimmable</b>	Triac/ELV

## Dimensions



## Technical Details

**Construction:** IC rated for direct contact with insulation. For use in IC and non-IC conditions.

**Installation:** High strength hanger bars can easily be nailed to joists. Suitable for T-grid and drop ceiling applications. See installation sheet for detailed information.

**Hanger Bars:** Pre Installed hanger bars with True Nail easy installation in regular lumber, engineered lumber, and Laminated Beams. Integral T-bar slots for easy installation in T-Bars. Spans up 24" and can be repositioned 90°. Score lines allow for tool-free hanger bar size reduction. Integral leveling flange allows for single-person installation while easily aligning the housings with the joists.

**Electrical:** Driver is rated for 120V or 120/277V input. High Efficiency driver with a power factor > 0.95.

**Dimmability:** Option ELV/TRIAC dimming or 3 in 1 dimming; Triac, ELV and 0-10V dimming can be specified. Can be specified with Lutron drivers. For a full list of dimmers refer to the Dimmer Compatibility List here: [TEAKDIMMERS](#).

**Listings:** cUL Listed. UL Listed for Damp Location and for Wet Location with WET location Light Engines. UL Listed for Direct Contact with Insulation and Combustible Material.

## Product Number

Item	Lumens	Watts	Voltage	Dimming
<b>E2L08ICA</b>	850 lm	10.5W	120V	Triac/ELV

## Product Number Builder Example: E2L08ICA

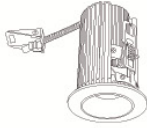
2" IC New Construction Frame	Lumens	Dimming
<b>E2L</b>	<b>08</b> 850 lm <b>11</b> 1100 lm	<b>ICA</b> Triac/ELV <b>ICAD</b> 0-10V/Triac/ELV

# Compatible Products

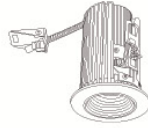


For use with 2" Teak™ IC Rated Housings & Frames

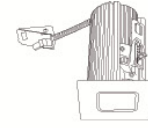
## 2" Teak™ LED Light Engines



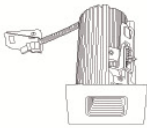
**E2L10 Series**  
**Round Reflector**  
Finishes:  
(W, BZ, B, C, H, BB)



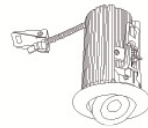
**E2L14 Series**  
**Round Baffle**  
Finishes:  
(W, BZ, B, BB)



**E2L13 Series**  
**Square Reflector**  
Finishes:  
(W, BZ, B, C, H, BB)



**E2L15 Series**  
**Square Baffle**  
Finishes:  
(W, BZ, B, BB)



**E2L18 Series**  
**Round Adjustable**  
Finishes:  
(W, BZ, BB)



**E2L19 Series**  
**Square Adjustable**  
Finishes:  
(W, BZ, BB)



**E2L97 Series**  
**Pull Down**  
Finishes:  
(W, BZ, BB)

### PRODUCT NUMBER BUILDER

Teak™ Light Engine	Style	Beam Angle	Color Temperature	Finish
<b>E2L</b>				
<b>10</b>	Round Reflector	<b>F</b> 38° (Standard)	<b>27</b> 2700K	<b>W</b> All White
<b>14</b>	Round Baffle	<b>NF</b> 28°	<b>30</b> 3000K	<b>BZ</b> All Bronze
<b>13</b>	Square Reflector	<b>WF</b> 60°	<b>35</b> 3500K	<b>B</b> Black w/ White Ring
<b>15</b>	Square Baffle		<b>40</b> 4000K	<b>C</b> Chrome w/White Ring
<b>18</b>	Round Adjustable			<b>H</b> Haze w/White Ring
<b>19</b>	Square Adjustable			<b>BB</b> All Black
<b>97</b>	Pull Down			