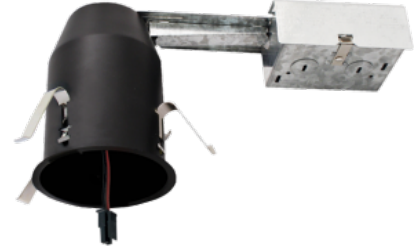


4" IC Airtight Remodel Housing for Architectural Koto™ LED Engine



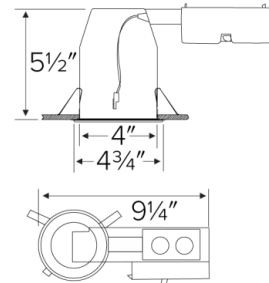
Features

- IC Airtight for direct contact with insulation.
- Koto™ Architectural Housing: 120/277V 0-10V/Triac/ELV or 120V Triac/ELV with optional Emergency Battery Backup.
- Must be used with Architectural Koto™ LED Light Engines (ELK19 or ELK21 Series).
- Lumen output based on module

Specifications

Wattage	11.8W
Lumens	750 (ELK19) - 950 (ELK21) lm
Voltage	120V
Dimmable	Triac/ELV

Dimensions



Technical Details

Lamp: Designed for use with ELCO Architectural Koto™ LED Light Engines (ELK19 or ELK21 Series)

Construction:

- Single Wall IC Rated for direct contact with insulation, for use in IC or non-IC conditions.
- Housing adjusts in frame to accommodate up to 1 1/2" ceiling thickness.
- Airtight housing with gasket to restrict airflow in accordance with ASTM E-283 air-tight requirements.
- Steel housing for greater heat dissipation. Stamped galvanized steel frame.

Installation: Designed for ceiling plenums where 2x6 joists or taller joists are used. Maximum hole cutout is 4 1/4". See installation sheet for detailed information.

Junction Box: Positioned to accommodate straight conduit runs. Seven 1/2" trade size conduit knockouts, four 3/4" knockouts. Pry-out knockout slots. 4 Romex pryouts with strain relief.

Electrical:

- Input Voltage: 120V .
- Inherently protected.

Dimmability:

- Dimmability based on lamp.

Listings:

- UL Listed for Damp Location.
- UL Listed for Wet Location with select trims.
- UL Listed for Feed Through.
- UL Listed for Direct Contact with Insulation and Combustible Material.
- Airtight per ASTM E-283.
- Install a JA8-2016-E lamp/luminaire for Title 24 Compliance.

Warranty: ELCO Lighting warrants products will be free from defects in materials and workmanship for a period of 3 years.

Product Number

Item	Description	Lumens	Watts	Voltage	Dimming
E4LK87RICA	Remodel	750 (ELK19) - 950 (ELK21) lm	11.8W	120V	Triac/ELV

Product Number Builder Example: E4LK87RICA

4" Koto™ Standard ICA Remodel Housing	Voltage	Dimming
E4LK	<input type="text" value="87 120V"/>	<input type="text" value="RICA Triac/ELV"/>

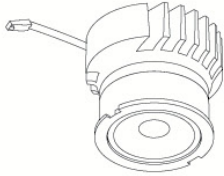
Product Custom Image

Compatible Products

For use with Dedicated 4" Architectural ICA LED Housings



Koto™ Architectural LED Light Engine



Koto™ LED Light Engine
ELK19 - ELK21

PRODUCT NUMBER BUILDER			
Koto™ LED Light Engine	Lumens	Color Temperature	Beam Angle
ELK			
19	750 - 850 lm	27D 2700K	(blank) 38° lens (Standard)
21	1100 - 1500 lm	30D 3000K	-S 18° lens
		35D 3500K	-N 25° lens
		40D 4000K	-W 60° lens
		SD Sunset Dimming (ELK19 Only)	

ACCESSORIES



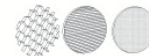
Lens

EP731C 18° Lens
EP732C 25° Lens
EP733C 38° Lens
EP734C 60° Lens

**EP732C, EP733C, EP734C Included*

Reflectors

EP735C 15°
EP736C 25°
EP737C 38°
EP738C 60°



Secondary Optics

L45 Hex Louver
L46 Linear Louver
L47 Spread Louver

4" Pex™ Twist-&-Lock Trims



Reflector

ELK4118

Finishes:

(W, BB, BZ, B, C, H)



Adjustable Gimbal

ELK4129

Finishes:

(W, BB, BZ, B, C, H)



Adjustable Pinhole

ELK4127

Finishes:

(B, BB, BZ)



Adjustable Baffle

ELK4193

Finishes:

(W, BB, B)



Reflector

ELK4218

Finishes:

(W, BB, BZ, B, C, H)



Adjustable Gimbal

ELK4229

Finishes:

(W, BB, BZ, B, C, H)

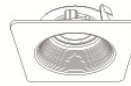


Adjustable Pinhole

ELK4227

Finishes:

(B, BB, BZ)

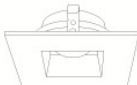


Adjustable Phenolic Baffle

ELK4293

Finishes:

(W, BB, B)

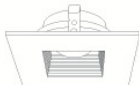


Adjustable Reflector

ELK4282

Finishes:

(W)



Adjustable Baffle

ELK4284

Finishes:

(W)

*Finishes: **W** - All White, **BB** - All Black, **BZ** - All Bronze, **B** - Black Reflector w/White Ring, **C** - Chrome Reflector w/White Ring, **H** - Haze Reflector w/White Ring

Compatible Products

For use with Dedicated 4" Architectural ICA LED Housings



4" Flexa™ Twist-&-Lock Trims

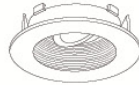


Round Reflector

ELK4721

Finishes:

(**WW**, **BB**, **BZBZ**, **BW**, **CC**, **CW**,
CN, **HW**)



Round Baffle

ELK4723

Finishes:

(**WW**, **BB**, **BZBZ**, **BW**)

*Finishes: **WW** - All White, **BB** - All Black, **CC** - All Chrome, **BZBZ** - All Bronze, **BW** - Black Reflector w/White Ring,
CW - Chrome Reflector w/White Ring, **CN** - Chrome Reflector w/Nickel Ring, **HW** - Haze Reflector w/White Ring