



RANDALL®

PRESSURE BALANCE TUB/SHOWER VALVE TRIM WITH DIVERTER



- Cast brass valve with built-in check stops
- Ceramic disc valve cartridge
- Adjustable hot limit safety stop
- Pressure balance cartridge maintains constant output temperature in response to changes in relative hot and cold supply pressures
- Concealed mounting hardware
- Integral diverter
- Available with cross or lever handle

CODES AND STANDARDS

Meets or Exceeds ASME A112.18.1/CSA B125.1/ASSE 1016

AVAILABLE FINISHES

- Polished Chrome
- Brushed Nickel
- Platinum Nickel
- Satin Brass

FINISH CODE

- 100
- 144
- 150
- 427

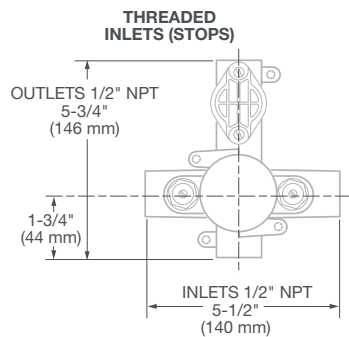
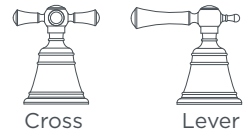
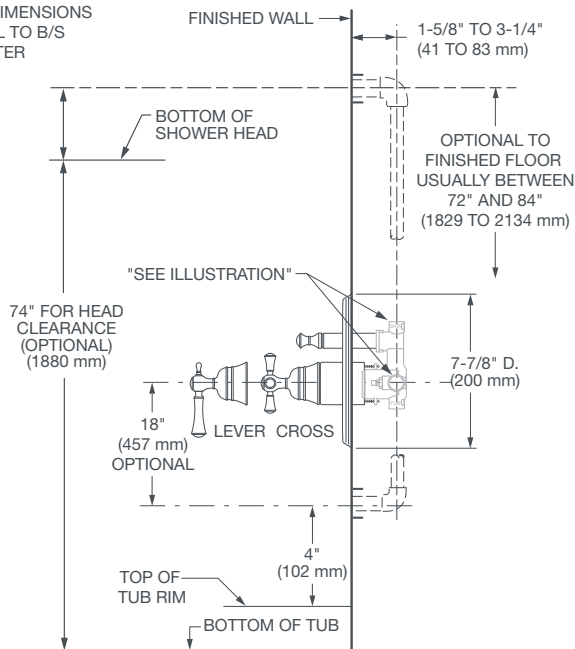
DESCRIPTION

- Pressure Balance Tub/Shower Trim
- Cross Handle
- Lever Handle (ADA only)
- Tub/Shower Rough Valve (required component)

PRODUCT NUMBER

- D35102640.XXX
- D35102600.XXX
- D35000600.191

NOTE: ALL DIMENSIONS ARE TYPICAL TO B/S WITH DIVERTER



IMPORTANT: These measurements are subject to change or cancellation. No responsibility is assumed for use of superseded or voided pages.

PART OF LIXIL



Meets the Americans with Disabilities Act Guidelines and ANSI A117.1 Requirements for the physically challenged.