

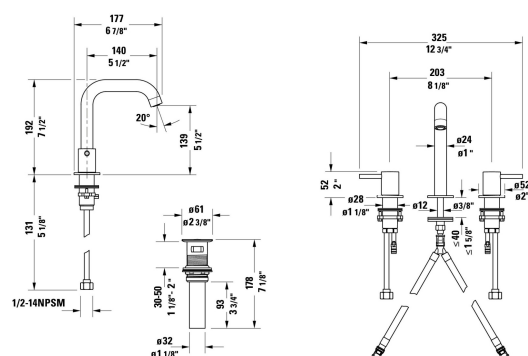
Bathroom Sink Faucet # CE1060005U.. / CE1060005U.. / CE1060005U..

| < 7 1/2 " > |



Bathroom Sink Faucet	Dimension	Weight	Order number
Water connection: Flexible connecting hoses, Aerator with EasyClean, Ceramic cartridge, with push-open waste set, recommended operating pressure: 14.5038 - 72.519 psi			
Colors			
10 Chrome 46 Black Matte 70 Brushed Nickel			
Variant			
Chrome, Height: 7 1/2 ", 1/2"14NPSM, Spray pattern: Normal spray, Flow rate: 1.2 gal/min, WaterSense: Yes, ADA: Yes, cUPC listed: Yes	2 "x7 1/2 "	4.630 lb	CE1060005U..
Black Matte, Height: 7 1/2 ", 1/2"14NPSM, Spray pattern: Normal spray, Flow rate: 1.2 gal/min, WaterSense: Yes, ADA: Yes, cUPC listed: Yes	2 "x7 1/2 "	4.630 lb	CE1060005U..
Brushed Nickel, Height: 7 1/2 ", 1/2"14NPSM, Spray pattern: Normal spray, Flow rate: 1.2 gal/min, WaterSense: Yes, ADA: Yes, cUPC listed: Yes	2 "x7 1/2 "	4.630 lb	CE1060005U..

All drawings contain the necessary measurements which are subject to standard tolerances. They are stated in inch & mm and are non-binding. Exact measurements, in particular for customized installation scenarios, can only be taken from the finished ceramic piece.



Bathroom Sink Faucet # CE1060005U.. / CE1060005U.. /
CE1060005U..

|< 7 1/2 " >|