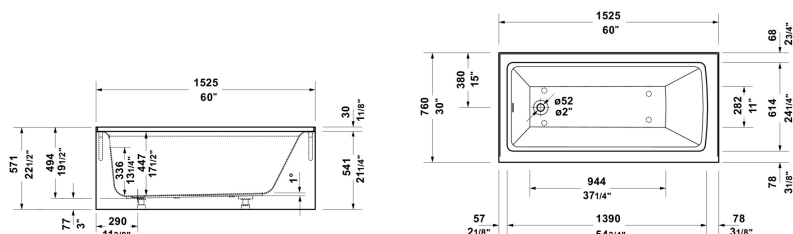


# Architec alcove tub # 700440000000090 / 700440000000099

|&lt; 60 " &gt;|



alcove tub	Dimension	Weight	Order number
Rectangular, Installation Type: Alcove, Integrated acrylic panel front, White, Material: Sanitary acrylic, Number of backrests: 1 Right, Removable acces panel:, Includes support frame, Overflow: Yes, Drain orientation: Left, Overflow position: Foot end, Capacity gal: 29 gal			
Colors			
00 White			
Variant			
	60 "x21 "	110.231 lb	700440000000090
	60 "x21 "	110.231 lb	700440000000099
Suitable products			
Waste and overflow Bowden cable length: 34 " , 25 5/8 x 3 1/2 "	25 5/8 x 3 1/2 "		792821
Waste and overflow ADA: Yes, 42 1/2 x 3 1/2 "	42 1/2 x 3 1/2 "		792828
Waste and overflow ADA: Yes, 4 3/8 x 4 3/8 "	4 3/8 x 4 3/8 "		792829
Waste and overflow Bowden cable length: 22 1/8 " , 28 3/4 x 3 1/2 "	28 3/4 x 3 1/2 "		792825
Mounting Bracket Mounting kit , 28 x 3 "	28 x 3 "		790160
shower tray foot Matches series Architec, 2 1/8 x 2 1/8 "	2 1/8 x 2 1/8 "		790164

All drawings contain the necessary measurements which are subject to standard tolerances. They are stated in inch & mm and are non-binding. Exact measurements, in particular for customized installation scenarios, can only be taken from the finished ceramic piece.