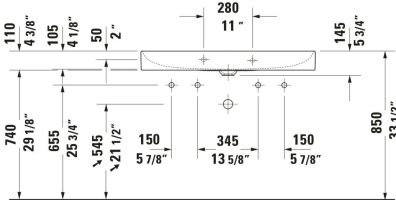
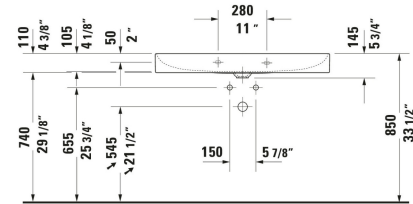
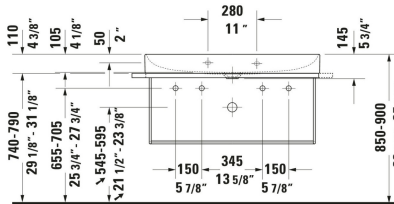
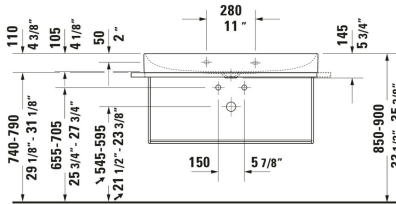
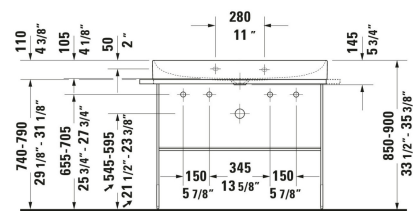
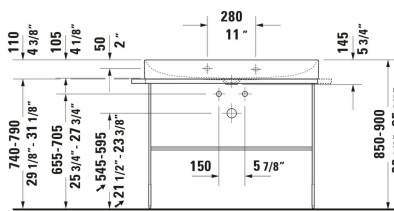
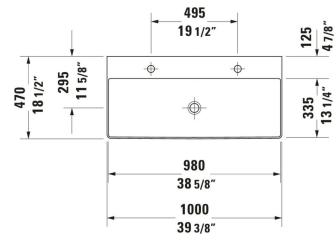
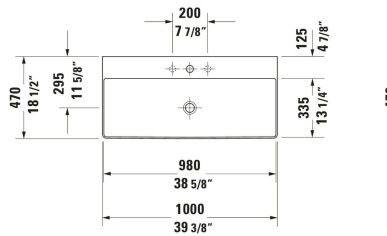
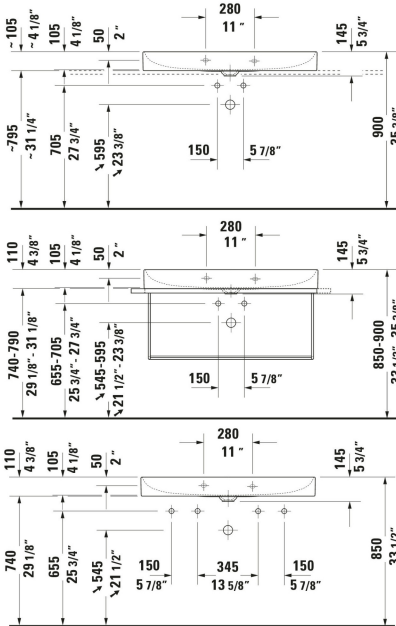


**DuraSquare Wall Mounted Sink # 2353100041 / 2353100043 / 2353100044 / 2353100071 / 2353100073**

| < 39 3/8 " > |



**Wall Mounted Sink**

**Dimension**

**Weight**

**Order number**

DuraCeram®, Rectangular, Includes faucet deck: Yes, Overflow: No, Includes ceramic drain cover, Includes slotted waste, Underside glazed, Back side glazed: No, 39 3/8 "

**Colors**

00 White

**Variant**

● White High Gloss, Number of basins: 1 Middle, Number of faucet holes: 1 Middle, cUPC listed: No	39 3/8 "x5 3/4 "	50.486 lb	2353100041
● ● White High Gloss, Number of basins: 2 Middle, Number of faucet holes: 1 Left, Right, cUPC listed: No	39 3/8 "x5 3/4 "	50.486 lb	2353100043
● ● ● White High Gloss, Number of basins: 1 Middle, Number of faucet holes: 3 Middle, Soap dispenser position: Left, cUPC listed: No	39 3/8 "x5 3/4 "	50.486 lb	2353100044
● White High Gloss, Number of basins: 1 Middle, Number of faucet holes: 1 Middle, Ground, cUPC listed: No	39 3/8 "x5 3/4 "	50.486 lb	2353100071

**DuraSquare Wall Mounted Sink # 2353100041 / 2353100043 / 2353100044 / 2353100071 / 2353100073**

|< 39 3/8 " >|

●●● White High Gloss, Number of basins: 1 Middle, Number of faucet holes: 3 Middle, Ground, Soap dispenser position: Left, cUPC listed: No	39 3/8 "x5 3/4 "	50.486 lb	2353100073
<b>Spare parts</b>			
Towel Bar Number of arms:	37 x 2 1/2 "	1.543 lb	003119
P-Trap Material: Brass, Outlet: horizontal, Suitable for Wall Mounted Sink	2 3/4 x 16 3/4 "	3.307 lb	005036
<b>Suitable products</b>			
Console Installation Type: Floorstanding, Sink mounted, Adjustable height: 2 ", Hardware included: Yes, Reversible: Yes, Includes towel rail: Yes, 41 7/8 x 17 3/4 "	41 7/8 x 17 3/4 "		003103
Console Installation Type: Sink mounted, Hardware included: Yes, Reversible: Yes, Includes towel rail: Yes, 41 7/8 x 17 3/4 "	41 7/8 x 17 3/4 "		003104
Shelf Insert Material: Glass, 38 1/4 x 15 "	38 1/4 x 15 "		009965
Vanity Cabinet Number of drawers: 1, Includes vanity top: Yes, Faucet holes possible, Handle, Slow close, Lay-in compartment Optional, 47 1/4 x 21 5/8 "	47 1/4 x 21 5/8 "		DE4949
Vanity Cabinet Number of drawers: 1, Number of drawers: 1, Includes vanity top: Yes, Faucet holes possible, Handle, Siphon cut-out: Yes, Panel: Yes, Slow close, Lay-in compartment Optional, 47 1/4 x 21 5/8 "	47 1/4 x 21 5/8 "		DE4969

*All drawings contain the necessary measurements which are subject to standard tolerances. They are stated in inch & mm and are non-binding. Exact measurements, in particular for customized installation scenarios, can only be taken from the finished ceramic piece.*