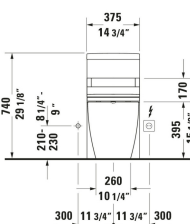
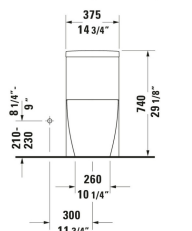
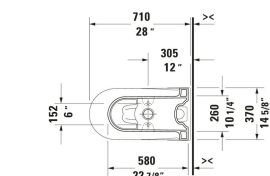
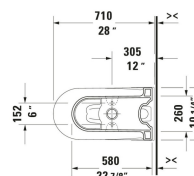
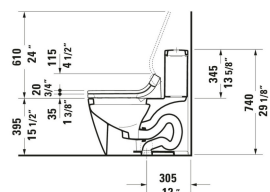
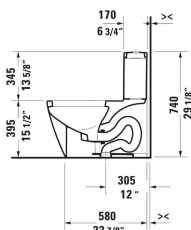
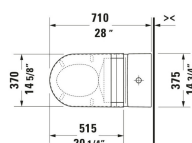
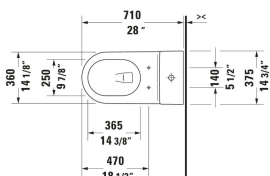


## Starck 2 One Piece Toilet # 2133010005

| < 14 3/4 " > |



One Piece Toilet	Dimension	Weight	Order number
28 ", elongated, Single Flush, Flush water quantity: 1.28 gal, Siphonic, Flushing rim: Closed, Outlet: vertical, Trip lever placement: Top, Rough-in: 12 ", cUPC listed: Yes			
<b>Colors</b>			
00 White			
<b>Variant</b>			
White High Gloss, WaterSense: Yes	14 3/4 "x29 1/8 "	125.663 lb	2133010005
<b>Spare parts</b>			
Installation Set One Piece Toilet, Toilet Bowl	2 3/8 x 5 1/8 "	1.499 lb	001431
<b>Suitable products</b>			
Shower toilet seat Number of warm air dryer options: 4 Steps, Water position adjustment: 5 Steps, Number of spray intensity options: 3 Steps, Number of spray temperature options: 4 Steps, Water position adjustment: 5 Steps, Rearwash, Frontwash, Pulsing shower spray: Oscillating, Number of user profiles: 2, Self-cleaning function, Decalcification function, Night light, 14 5/8 x 20 1/4 "	14 5/8 x 20 1/4 "		610000
Toilet Seat Open front, elongated, 14 3/8 x 19 1/8 "	14 3/8 x 19 1/8 "		006431
Toilet Seat Slow close, Open front, elongated, 14 3/8 x 19 1/8 "	14 3/8 x 19 1/8 "		006439
Toilet Seat Slow close: No, Hinge material: Stainless Steel, elongated, 14 5/8 x 19 5/8 "	14 5/8 x 19 5/8 "		006332
Toilet Seat Slow close: Yes, Removable Seat, Hinge material: Stainless Steel, elongated, 14 5/8 x 19 1/4 "	14 5/8 x 19 1/4 "		006339

## Starck 2 One Piece Toilet # 2133010005

|< 14 3/4 " >|

One Piece Toilet One Piece Toilet: 2133010005, elongated, Siphonic, Flushing rim: Closed, Outlet vertical, Single Flush, Trip lever placement: Top, Flush water quantity: 1.28 gal, Toilet 14 3/4 x 28 " Seat: 0063390000, Lid color: White High Gloss, Removable Seat, Slow close, 14 3/4 x 28 "	D16547
One Piece Toilet One Piece Toilet: 2133010005, elongated, Siphonic, Flushing rim: Closed, Outlet vertical, Single Flush, Trip lever placement: Top, Flush water quantity: 1.28 gal, 14 3/4 x 28 "	D16549

*All drawings contain the necessary measurements which are subject to standard tolerances. They are stated in inch & mm and are non-binding. Exact measurements, in particular for customized installation scenarios, can only be taken from the finished ceramic piece.*