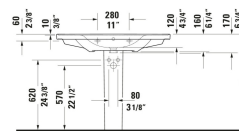
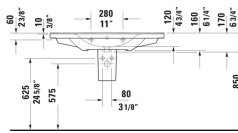
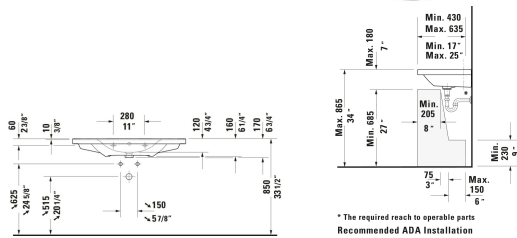
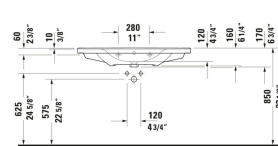
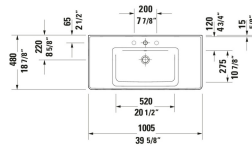


**D-Neo Wall Mounted Sink # 2367100000 / 2367100060 / 2367100087**

| < 39 5/8 " > |



Wall Mounted Sink	Dimension	Weight	Order number
D-shaped, Includes faucet deck: Yes, Overflow: Yes, Underside glazed, 39 5/8 ", ADA: Yes			
<b>Colors</b>			
00 White			
<b>Variant</b>			
● White High Gloss, Rectangular, Number of basins: 1 Middle, Number of faucet holes: 1 Middle, Back side glazed: No	39 5/8 "x6 1/4 "	59.525 lb	2367100000
⊗ White High Gloss, Rectangular, Number of basins: 1 Middle, Back side glazed: No	39 5/8 "x6 1/4 "	59.525 lb	2367100060
White High Gloss, Number of faucet holes: 3	39 5/8 "x6 1/4 "	59.525 lb	2367100087
<b>Infobox</b>			
Space-saving siphon is recommended in conjunction with vanity unit / To attach washbasins from a size of 1000 mm, two attachments with article no. # 6951000000 are required			
<b>Spare parts</b>			
Sink Drain Suitable for washbasin with overflow, Ø 2 1/2 "	Ø 2 1/2 "	0.75 lb	005052
P-Trap	12 1/4 x 4 1/2 "	0.705 lb	005026
P-Trap Material: Brass, Outlet: horizontal, Suitable for Wall Mounted Sink	2 3/4 x 16 3/4 "	3.307 lb	005036
<b>Suitable products</b>			
Vanity Cabinet Number of drawers: 1, Number of drawers: 1, Handle, Siphon cut-out: Yes, Panel: Yes, Slow close, Lay-in compartment Optional, Required Items: Wall Mounted Sink D-Neo # 236710, 38 3/4 x 17 3/4 "	38 3/4 x 17 3/4 "		DE4356

**D-Neo Wall Mounted Sink # 2367100000 / 2367100060 / 2367100087**

|< 39 5/8 " >|

Vanity Cabinet Number of drawers: 1, Handle Anthracite, Slow close, Lay-in compartment Optional, Required Items: Wall Mounted Sink D-Neo # 236710, 38 3/4 x 17 7/8 "	38 3/4 x 17 7/8 "	K25084
Vanity Cabinet Number of drawers: 2, Handle Anthracite, Siphon cut-out: Yes, Panel: Yes, Slow close, Lay-in compartment Optional, Required Items: Wall Mounted Sink D-Neo # 236710, 38 3/4 x 17 7/8 "	38 3/4 x 17 7/8 "	K25284

*All drawings contain the necessary measurements which are subject to standard tolerances. They are stated in inch & mm and are non-binding. Exact measurements, in particular for customized installation scenarios, can only be taken from the finished ceramic piece.*