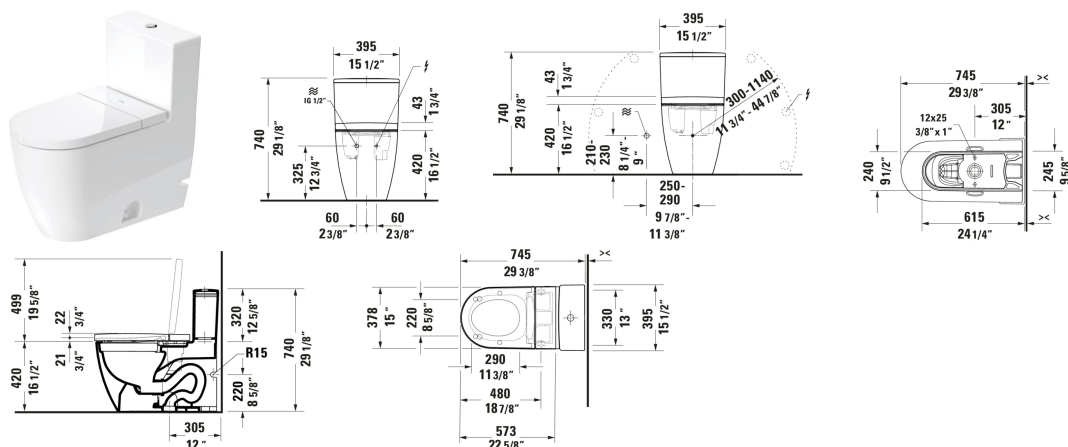


## ME by Starck One Piece Toilet # 21890120U2

| < 14 7/8 " > |



One Piece Toilet	Dimension	Weight	Order number
29 3/8 ", elongated, HygieneGlaze, Flush water quantity: 1.32/1.32 gal, Siphonic, Flushing rim: Rimless, Outlet: vertical, Rough-in: 12 "			
<b>Colors</b>			
20 HygieneGlaze (an antibacterial ceramic glaze that provides almost indefinite effectiveness)			
<b>Variant</b>			
♦ White High Gloss, Dual Flush, Flush water quantity: 1.32/0.92 gal, WaterSense: Yes, ADA: Yes, cUPC listed: Yes, cC/IAPMO®: No	14 7/8 "x29 1/8 "	147.710 lb	21890120U2
<b>Infobox</b>			
Not available in Wondergliss			
<b>Spare parts</b>			
Installation Set	2 3/8 x 5 1/8 "	1.874 lb	001417
<b>Suitable products</b>			
Shower toilet seat Plus Lid actuation: At the touch of a button, Automatic, Adjustable blower levels: 1 Step, Number of warm air dryer options: 4 Steps, Water position adjustment: 5 Steps, Number of spray intensity options: 3 Steps, Number of spray temperature options: 4 Steps, Water position adjustment: 5 Steps, Rearwash, Frontwash, Pulsing shower spray: Oscillating, Self-cleaning function, Energy saving mode: Adjustable, Holiday mode, Night light, 14 7/8 x 22 1/2 "			612000

ME by Starck One Piece Toilet # 21890120U2

|< 14 7/8 " >|

Shower toilet seat Lite Adjustable blower levels: 1 Step,  
 Number of warm air dryer options: 4 Steps, Water position  
 adjustment: 5 Steps, Number of spray intensity options: 3 Steps,  
 Number of spray temperature options: 4 Steps, Water position 14 7/8 x 22 1/2 "  
 adjustment: 5 Steps, Rearwash, Frontwash, Pulsing shower  
 spray: Oscillating, Self-cleaning function, Energy saving mode:  
 Adjustable, Holiday mode, Night light, 14 7/8 x 22 1/2 "

612001

*All drawings contain the necessary measurements which are subject to standard tolerances. They are stated in inch & mm and are non-binding. Exact measurements, in particular for customized installation scenarios, can only be taken from the finished ceramic piece.*