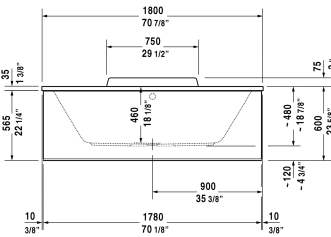
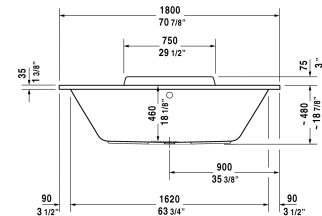
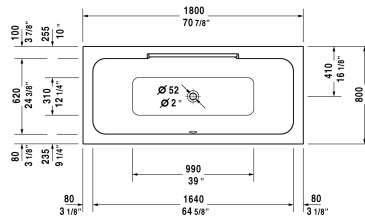


DuraStyle Bathtub # 70029800000090

< 70 7/8" Inch >



Bathtub	Dimension	Weight	Order number
rectangle, drop-in or for panel, with two backrest slopes, cUPC® listed*, Sanitary acrylic			
Colors			
00 White			
Variant			
Base tub	70 7/8" x 31 1/2" Inch	75 lb	70029800000090
Infobox			
* Complies with the following standards: CSA B45.5/IAPMO Z124			
Suitable panels			
Panel for niche (alcove), for # 700298 (70 7/8" x 31 1/2")	70 1/2" Inch		DS8939
Panel for back-to-wall, for # 700298 (70 7/8" x 31 1/2")	70 1/2" x 31 1/8" Inch		DS8778
Panel for corner right, for # 700298 (70 7/8" x 31 1/2")	70 1/2" x 31 1/8" Inch		DS8783
Panel for corner left, for # 700298 (70 7/8" x 31 1/2")	70 1/2" x 31 1/8" Inch		DS8788
Suitable products			
Tile flange ,			790112
Cable-driven waste and overflow ,			790219
Bathtub anchors for mounting and support of bathtubs and shower trays, 3 pieces,			790103
Cable-driven waste and overflow brass,			790250
Stereo transducers (speakers) for bathtubs ,			791818

DuraStyle Bathtub # 700298000000090

|< 70 7/8" Inch >|

Support frame (included), for D-Code bathtubs,

790133

All drawings contain the necessary measurements which are subject to standard tolerances. They are stated in inch & mm and are non-binding. Exact measurements, in particular for customized installation scenarios, can only be taken from the finished ceramic piece.