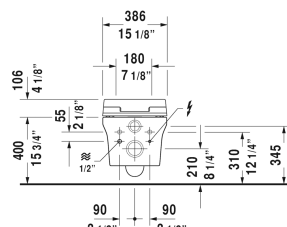
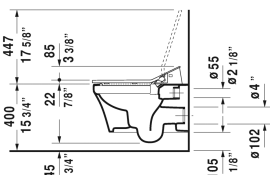
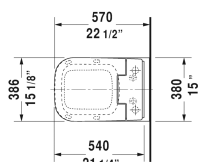


## P3 Comforts Toilet wall-mounted Duravit Rimless for SensoWash® # 256159..92

| < 15" Inch > |



Toilet wall-mounted Duravit Rimless for SensoWash®	Dimension	Weight	Order number
rimless, washdown model, Durafix included, only in combination with SensoWash, connecting elements for SensoWash with concealed connections included, cUPC® listed*			
<b>Colors</b>			
00 White 20 HygieneGlaze (an antibacterial ceramic glaze that provides almost indefinite effectiveness)			
<b>Variant</b>			
♦ 1.6/0.8 gpf	15" x 22 1/2" Inch	54 lb	256159..92
<b>Infobox</b>			
Durafix for concealed fixation is included, In-wall tank & carrier and actuator plate required for installation / Refer to page XXX, Wall-mounted toilet is ADA compliant, when installed with a seat height of 17" - 19" from the finished floor, * Complies with following standards: ASME A112.19.2/CSA B45.1 and ASME A112.19.14, If 2x4" carrier is used, # 100691 is mandatory for SensoWash® installation			
Sanitary ceramics with the special WonderGliss surface finish will remain clean and attractive-looking for a long time to come. When ordering WonderGliss please add a "1" as eleventh digit to the model number.			
Connecting set in combination with SensoWash shower-toilet seat			100691
Pre-installation set in combination with SensoWash, for in-wall carrier with horizontal support without shower toilet pre-installation/conduit pipe			005072
Noise reduction gasket for wall-mounted toilet		0.7 lb	005064
<b>Suitable products</b>			

**P3 Comforts Toilet wall-mounted Duravit Rimless for  
SensoWash® ½ # 256159..92**

|< 15" Inch >|

SensoWash® Slim shower-toilet seat for P3 Comforts* rear-, front and oscillating wash, individual adjustment of water temperature, spray wand position and water spray intensity, with slow close, night light, remote control included, locking function via remote control, self-cleaning wand, on / off-button, with concealed connections, seat and lid easily removable with one hand, automatic drainage in periods of prolonged disuse, 15 1/8" x 21 1/4" Inch	611400
---	--------

*All drawings contain the necessary measurements which are subject to standard tolerances. They are stated in inch & mm and are non-binding. Exact measurements, in particular for customized installation scenarios, can only be taken from the finished ceramic piece.*