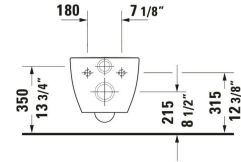
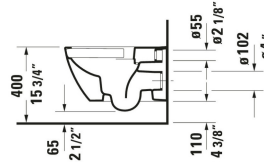
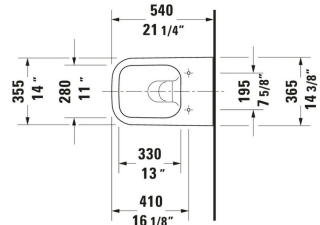


Happy D.2 Wall Mounted Toilet # 222209..92 / 222209..92 / 222209..92

| < 14 3/8 " > |



Wall Mounted Toilet	Dimension	Weight	Order number
Flush water quantity: 1.2/0.8 gal, Washdown model, Flushing rim: Rimless, Flush system: washdown model, Outlet horizontal, Concealed fixation, ADA: Yes, cUPC listed: Yes			
Colors			
00 White 20 HygieneGlaze (an antibacterial ceramic glaze that provides almost indefinite effectiveness) 89 Anthracite/Anthracite Matte			
Variant			
White High Gloss, Flush water quantity: 1.6/0.8 gal, WaterSense: Yes	14 3/8 "x13 1/4 "	54.454 lb	222209..92
White High Gloss, HygieneGlaze, Flush water quantity: 1.6/0.8 gal, WaterSense: Yes	14 3/8 "x13 1/4 "	54.454 lb	222209..92
Interior color Anthracite High Gloss, Exterior color Anthracite Matte, Flush water quantity: 1.6/0.8 gal, WaterSense: Yes	14 3/8 "x13 1/4 "	54.454 lb	222209..92
Spare parts			
Noise reduction gasket	16 1/2 x 15 3/8 "	0.441 lb	005090
Suitable products			
Toilet Seat Shape: Rectangular, Slow close: Yes, Removable Seat, Hinge material: Stainless Steel, 14 1/8 x 16 7/8 "	14 1/8 x 16 7/8 "		006459
Actuator Plate Actuator plates ,			115770
Actuator Plate A1 Plastic, Dual Flush, Trip lever type: Mechanical, Flush operation technology: Manual, Installation Type: surface mounted, Includes mounting frame, including mounting kit, Includes push rod, 8 1/2 x 3/8 "	8 1/2 x 3/8 "		WD5008
In-Wall Tank & Carrier Standard Includes HDPE toilet wall-mounted outlet bend DN 90/90, Powder-coated, Installation Type: In lightweight stand construction, Installation Type: Drywall, Max. projection toilet: 24 5/8 ", Adjustable height: 9 1/2 ", Trip lever type: Mechanical, Trip lever placement: Front, Adjustable flush volumes, Flush type: Dual Flush, Insulated tank, Self-supporting, Suitable for panelling with plasterboards, 23 1/4 x 3 1/2 "	23 1/4 x 3 1/2 "		WD1022

Happy D.2 Wall Mounted Toilet # 222209..92 / 222209..92 /
222209..92

|< 14 3/8 " >|

binding. Exact measurements, in particular for customized installation scenarios, can only be taken from the finished ceramic piece.