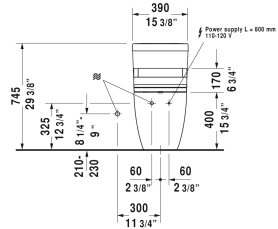
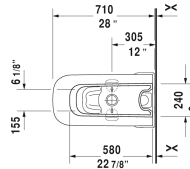
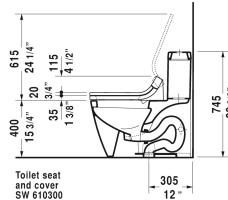
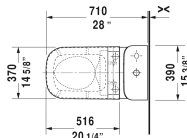


# Happy D.2 One-Piece toilet for SensoWash® # 212151..01

< 15 3/8" Inch >



One-Piece toilet for SensoWash®	Dimension	Weight	Order number
only in combination with SensoWash, syphonic, 12" rough-in, with dual flush piston valve, top flush, connecting elements for SensoWash with concealed connections included, vertical outlet, cUPC® listed*, 1.32/0.92 gpf			
<b>Colors</b>			
00 White 20 HygieneGlaze (an antibacterial ceramic glaze that provides almost indefinite effectiveness)			
<b>Variant</b>			
♦	15 3/8" x 28" Inch	126 lb	212151..01
<b>Infobox</b>			
* Complies with following standards: ASME A112.19.2/CSA B45.1 and ASME A112.19.14			
Sanitary ceramics with the special WonderGliss surface finish will remain clean and attractive-looking for a long time to come. When ordering WonderGliss please add a "1" as eleventh digit to the model number.			
Mounting set for One-Piece and Two-Piece toilets, outlet 3/8" - male thread, wall connection 1/2" - female thread, 1/2", North American version	15" Inch	1.1 lb	001431
<b>Suitable products</b>			
SensoWash® Starck C shower-toilet seat for Happy D.2* rear-, front and oscillating wash, power actuated lid and seat, individual adjustment of water-, air- and seat surface temperature as well as nozzle position and jet strength, remote control included, with concealed connections, 2 individually programmable user profiles, night light, Quick release: easy seat unit removal and attachment, on / off-button, self-cleaning wand, 14 5/8" x 20 1/4" Inch	14 5/8" x 20 1/4" Inch		610300

All drawings contain the necessary measurements which are subject to standard tolerances. They are stated in inch & mm and are non-binding. Exact measurements, in particular for customized installation scenarios, can only be taken from the finished ceramic piece.