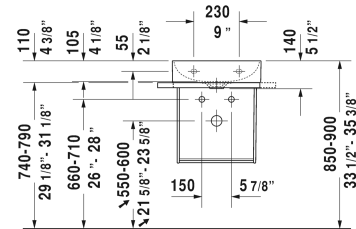
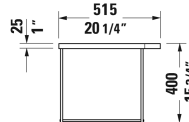
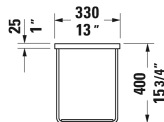
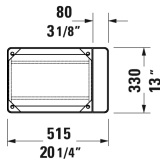


DuraSquare Metal console wall-mounted ** # 003110..00 / 003110..00

| < 20 1/4" Inch > |



Metal console wall-mounted **	Dimension	Weight	Order number
hardware included, for handrinse basin # 073245, towel rail right or left, reversible			
Colors			
10 Chrome 46 Black Matte			
Variant			
Chrome	20 1/4" x 13 1/8" Inch	9.9 lb	003110..00
Black Matte	20 1/4" x 13 1/8" Inch	9.9 lb	003110..00
Infobox			
** Glass inserts are not included - please order separately			
Suitable products			
Furniture handrinse basin without overflow, with faucet deck, ceramic covered slotted waste included, underside fully glazed, hardware included, wall-mounted, cUPC® listed*, 17 3/4" x 13 3/4" Inch	17 3/4" x 13 3/4" Inch		073245
Glass inserts safety glass, for metal console # 003109, 003110, 16 1/2" x 10 3/8" Inch	16 1/2" x 10 3/8" Inch		009966

All drawings contain the necessary measurements which are subject to standard tolerances. They are stated in inch & mm and are non-binding. Exact measurements, in particular for customized installation scenarios, can only be taken from the finished ceramic piece.